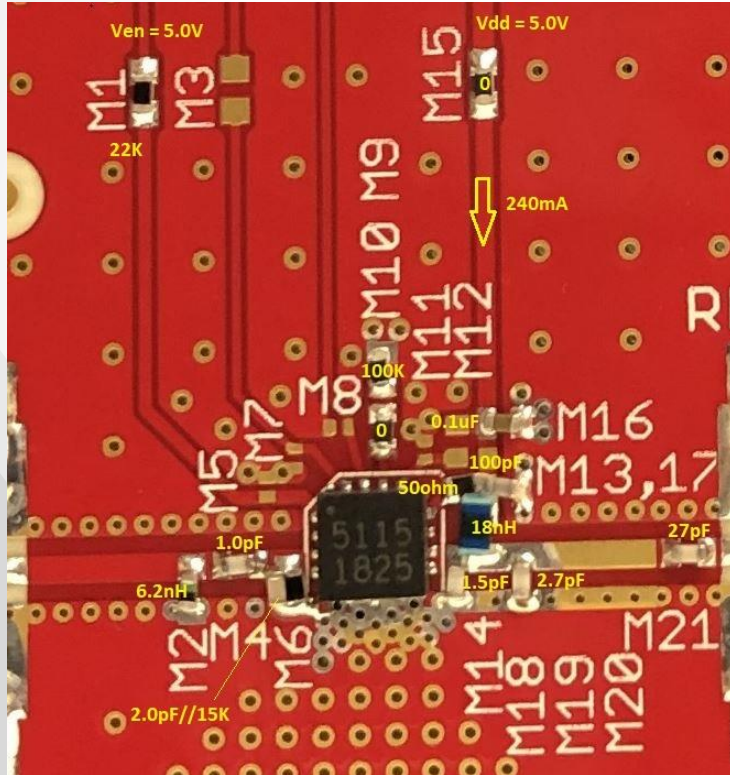


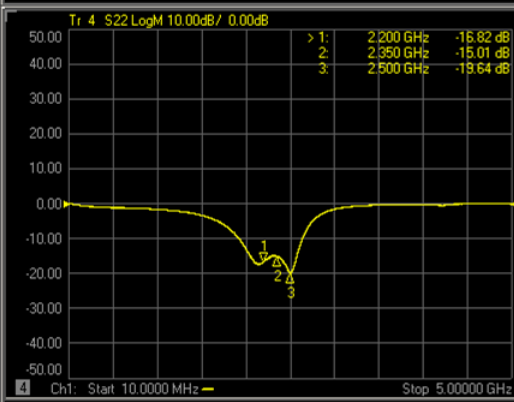
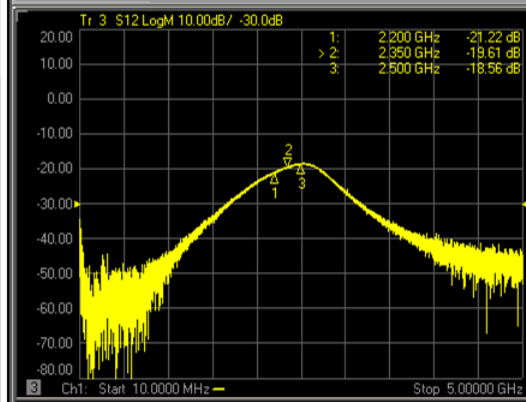
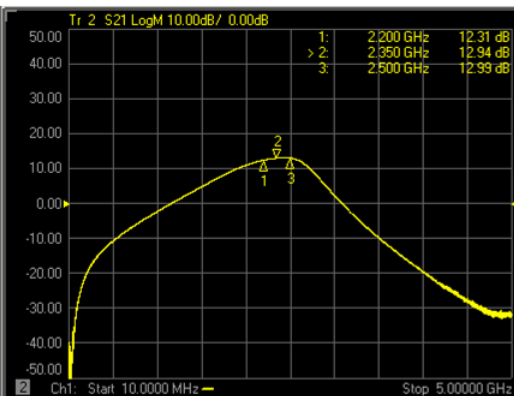
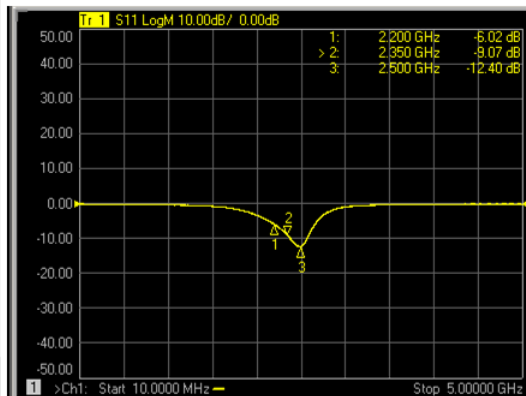


GRF5115 (2200 - 2500 MHz)

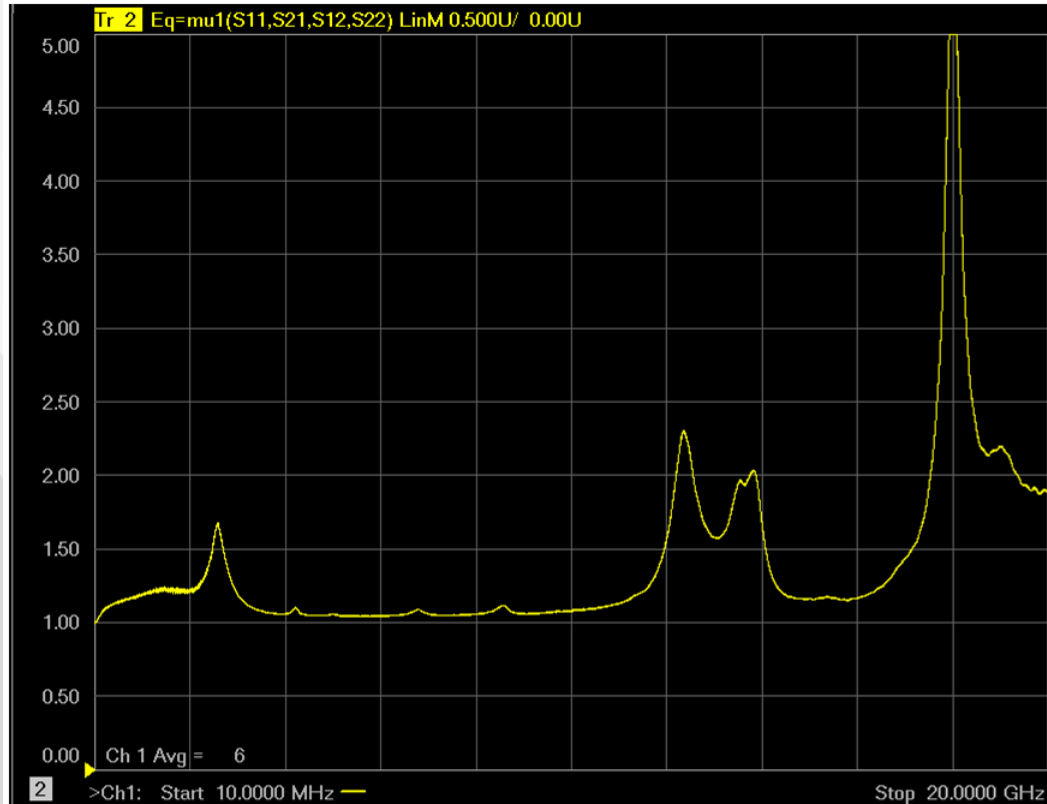
GRF5115 Schematic:



GRF5115 Response:



GRF5115 Stability Mu Factor:



GRF5115 Data:

Bias Point	Freq MHz	Vdd V	Ven V	Iddq mA	Pout/Ptone dBm	gain dB	tone spacing MHz	IIP3 dBm	OIP3 dBm	IP1dB dBm	OP1dB dBm	Eff %	EVB NF dB
5.0V/240mA	2200	5.0	5.0	240.9	18.0	12.4	2.0	34.3	46.7	21.4	32.7	45.5	1.3
5.0V/240mA	2300	5.0	5.0	240.9	18.0	12.9	2.0	32.7	45.6	21.2	33.0	50.0	1.2
5.0V/240mA	2400	5.0	5.0	240.9	18.0	13.2	2.0	32.8	46.0	21.2	33.3	57.7	1.2
5.0V/240mA	2500	5.0	5.0	240.9	18.0	12.9	2.0	33.0	45.9	20.7	32.5	60.0	1.2



Jeff Broxson

Vice President - Sales

Phone (336) 339-9314

jbroxson@guerrilla-rf.com

Alan Ake

Vice President - Applications/Technical Marketing

Phone (336) 708-4581

aake@guerrilla-rf.com

Guerrilla RF

1196 Pleasant Ridge Road, Suite 5
Greensboro, NC 27409

Phone: (336) 510-7840

www.guerrilla-rf.com