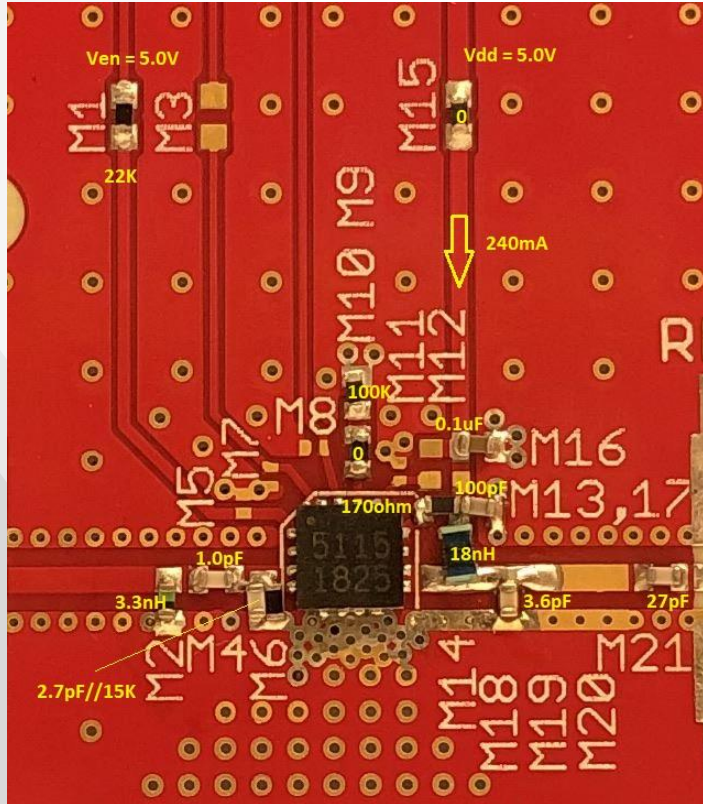


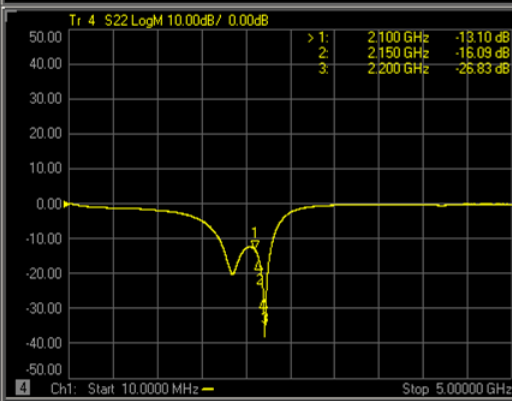
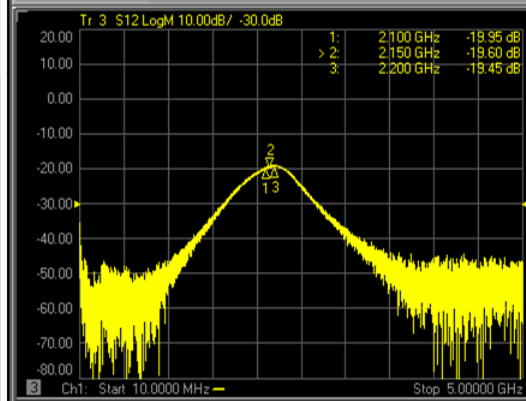
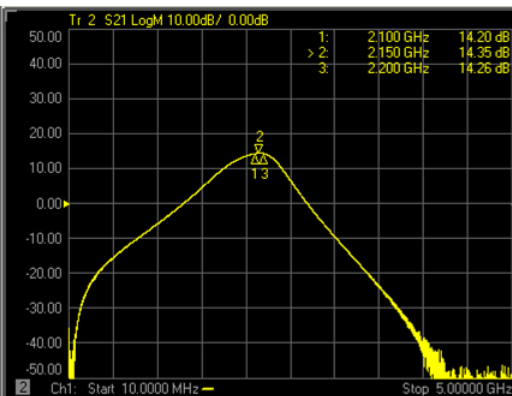
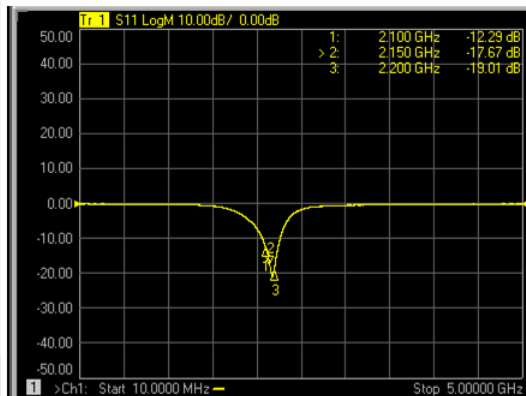


GRF5115 (2100 - 2200 MHz)

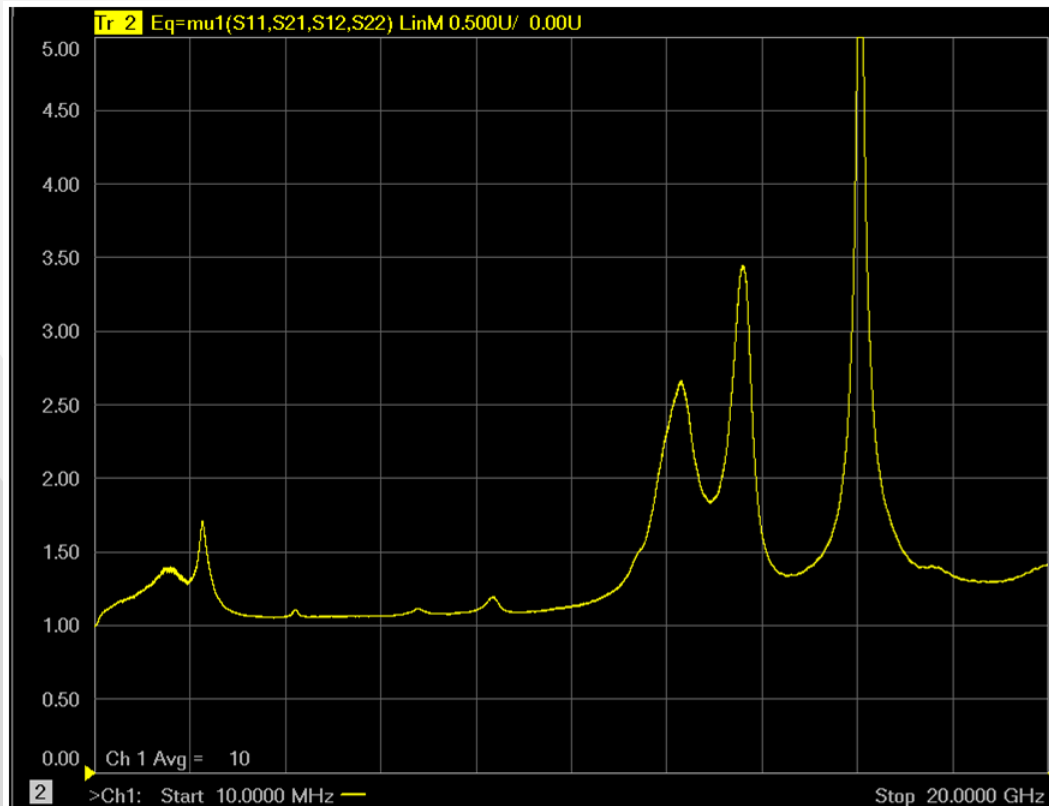
GRF5115 Schematic:



GRF5115 Response:



GRF5115 Stability Mu Factor:



GRF5115 Data:

Bias Point	Freq MHz	Vdd V	Ven V	Iddq mA	Pout/Ptone dBm	gain dB	tone spacing MHz	IIP3 dBm	OIP3 dBm	IP1dB dBm	OP1dB dBm	Eff %	EVB NF dB
5.0V/240mA	2100	5.0	5.0	239.4	18.0	14.4	2.0	33.6	48.0	20.0	33.1	58.1	1.60
5.0V/240mA	2150	5.0	5.0	239.4	18.0	14.5	2.0	34.5	49.0	20.0	32.9	59.1	1.55
5.0V/240mA	2200	5.0	5.0	239.4	18.0	14.4	2.0	35.2	49.6	20.0	32.8	61.7	1.50



Jeff Broxson

Vice President - Sales

Phone (336) 339-9314

jbroxson@guerrilla-rf.com

Alan Ake

Vice President - Applications/Technical Marketing

Phone (336) 708-4581

aake@guerrilla-rf.com

Guerrilla RF

1196 Pleasant Ridge Road, Suite 5
Greensboro, NC 27409

Phone: (336) 510-7840

www.guerrilla-rf.com