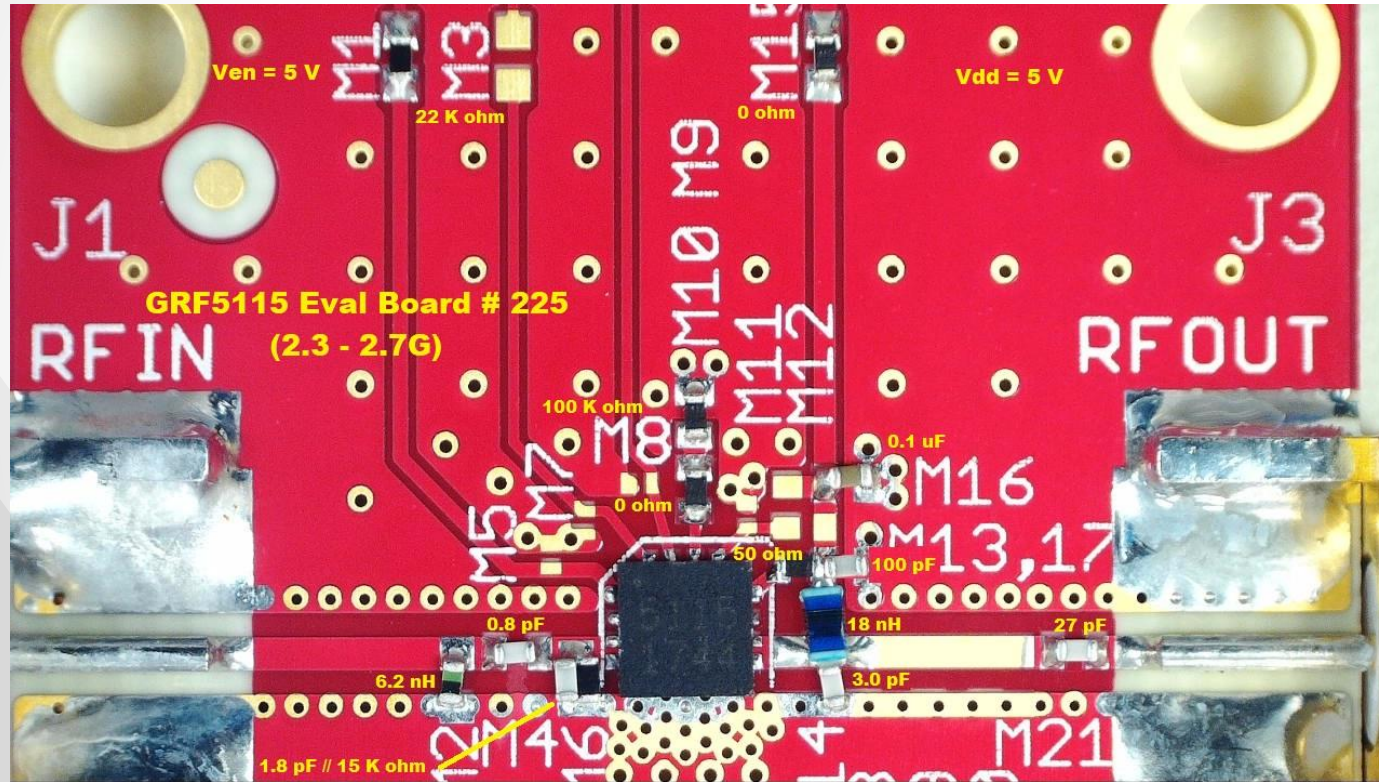




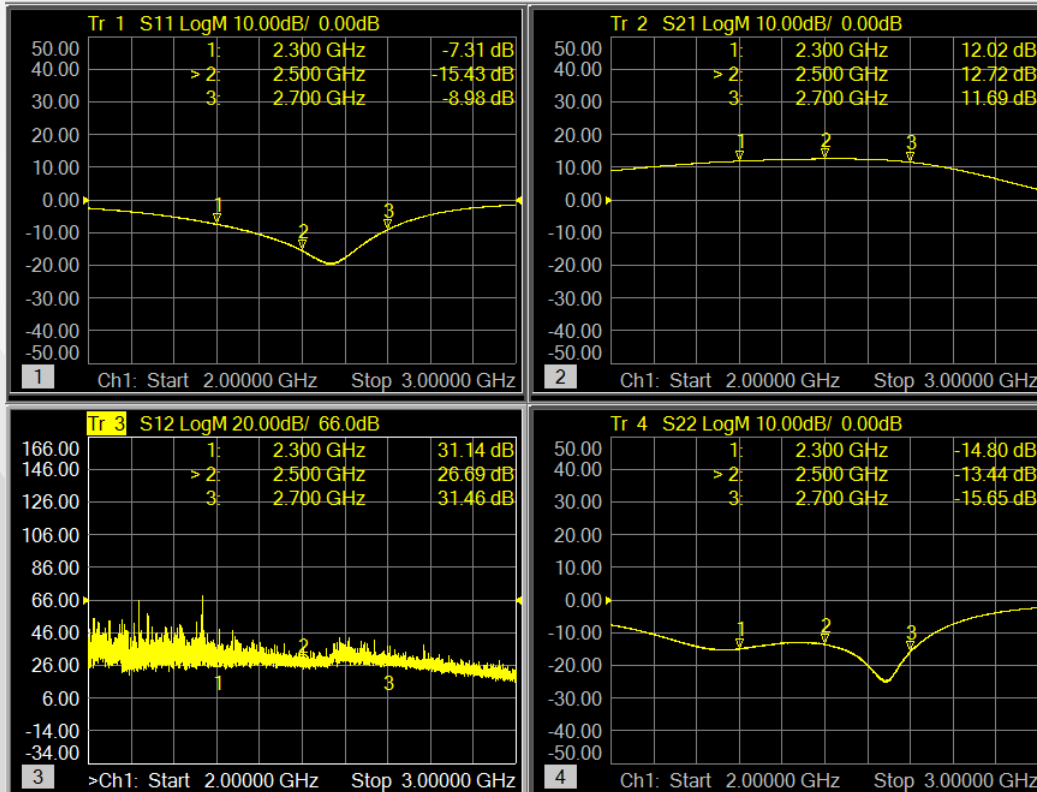
GRF5115 (2300 - 2700 MHz)

Evaluation Board # 225

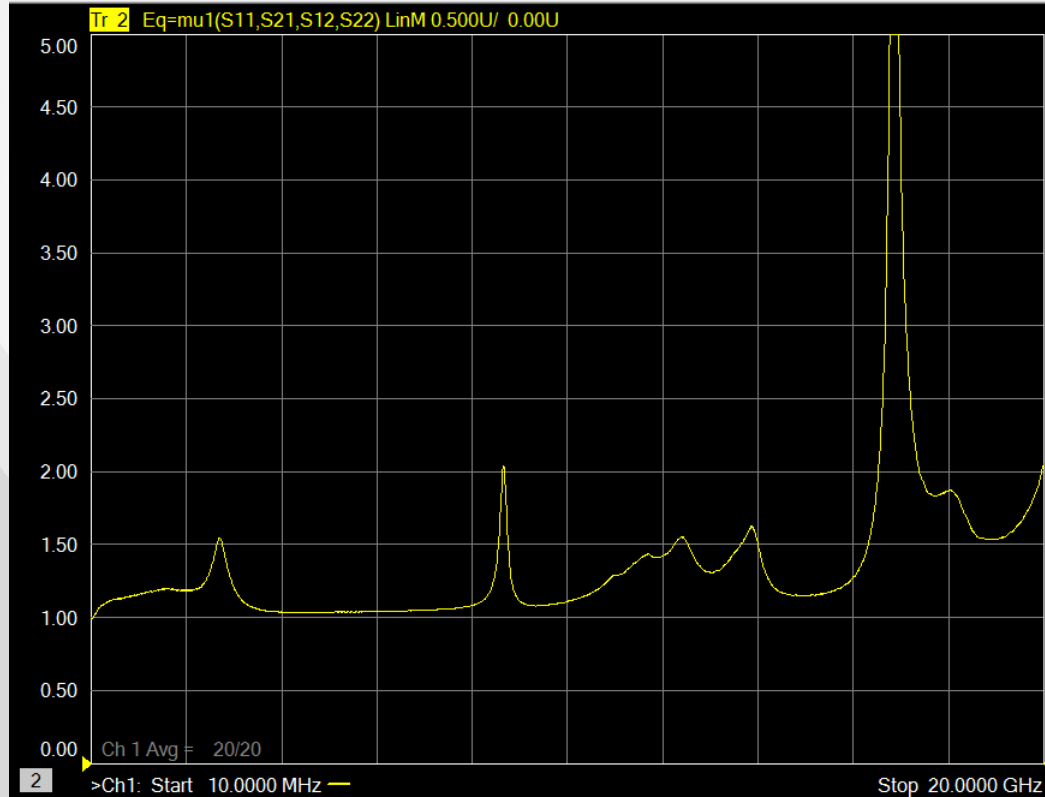
GRF5115 Schematic:



GRF5115 Response:



GRF5115 Stability Mu Factor:



GRF5115 Data:

Descriptor	Freq MHz	Vdd	Iddq mA	Ven	Ien mA	Pout/Ptone dBm	Gain dB	IIP3 dBm	OIP3 dBm	IP1dB dBm	OP1dB dBm	NF
GRF5115_Eval # 225	2300	5.0	271.7	5.0	1.0	18.0	12.1	33.8	45.9	21.1	32.2	1.4
GRF5115_Eval # 225	2500	5.0	271.7	5.0	1.0	18.0	12.8	31.9	44.7	21.2	32.8	1.3
GRF5115_Eval # 225	2700	5.0	271.7	5.0	1.0	18.0	11.6	33.5	45.1	22.0	31.8	1.3



Jeff Broxson

Vice President - Sales

Phone (336) 339-9314

jbroxson@guerrilla-rf.com

Alan Ake

Vice President - Applications/Technical Marketing

Phone (336) 708-4581

aake@guerrilla-rf.com

Guerrilla RF

1196 Pleasant Ridge Road, Suite 5
Greensboro, NC 27409

Phone: (336) 510-7840

www.guerrilla-rf.com