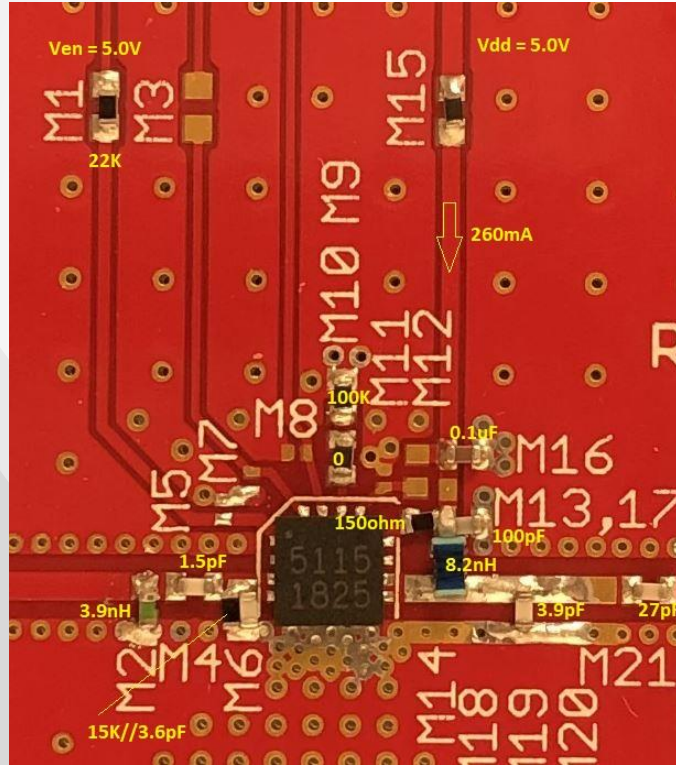


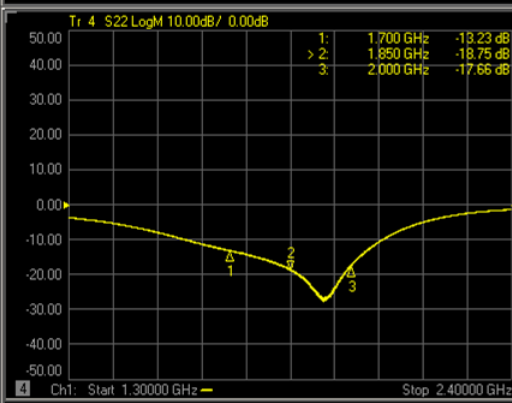
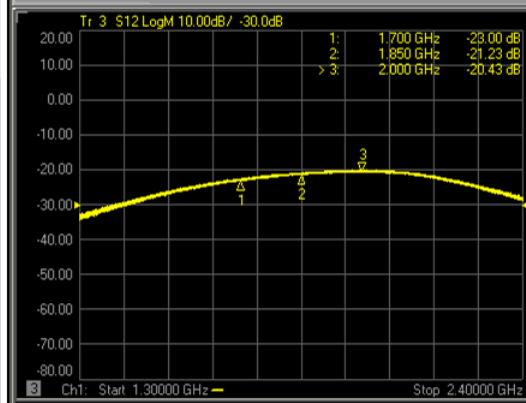
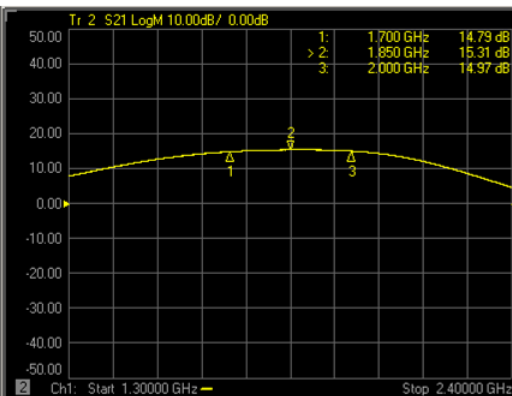
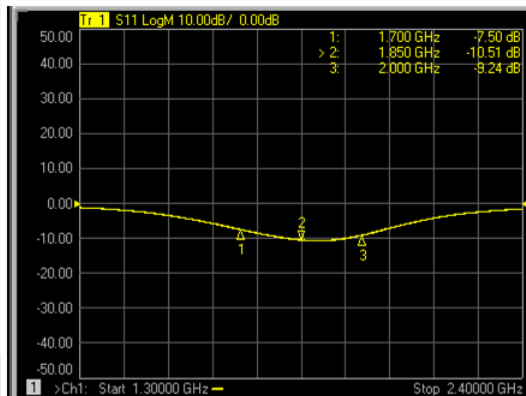


GRF5115 (1700 - 2100 MHz)

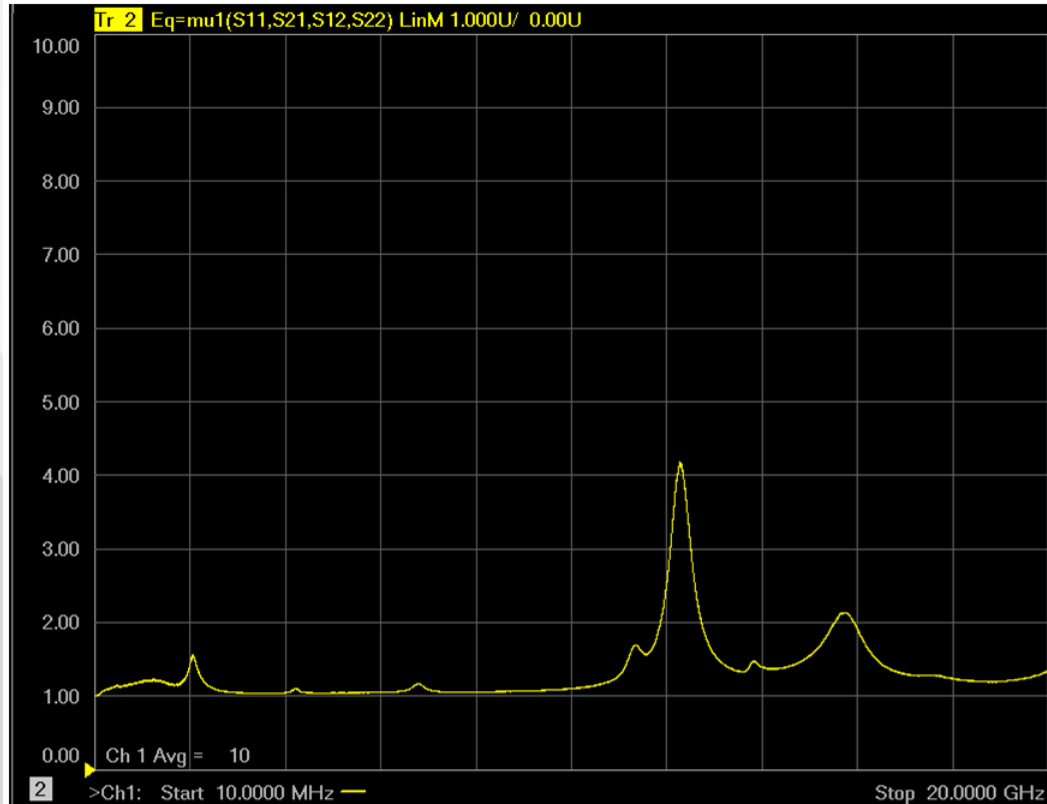
GRF5115 Schematic:



GRF5115 Response:



GRF5115 Stability Mu Factor:



GRF5115 Data:

Bias Point	Freq MHz	Vdd V	Ven V	Iddq mA	Pout/Ptone dBm	gain dB	tone spacing MHz	IIP3 dBm	OIP3 dBm	IP1dB dBm	OP1dB dBm	Eff %	EVB NF dB
5.0V/260mA	1700	5.0	5.0	261.2	12.0	14.8	2.0	32.8	47.6	18.2	32.0	49.4	1.27
5.0V/260mA	1850	5.0	5.0	261.2	12.0	15.3	2.0	30.7	46.0	18.4	32.7	56.9	1.14
5.0V/260mA	2000	5.0	5.0	261.2	12.0	15.0	2.0	30.1	45.1	18.1	32.1	61.9	1.10



Jeff Broxson

Vice President - Sales

Phone (336) 339-9314

jbroxson@guerrilla-rf.com

Alan Ake

Vice President - Applications/Technical Marketing

Phone (336) 708-4581

aake@guerrilla-rf.com

Guerrilla RF

1196 Pleasant Ridge Road, Suite 5
Greensboro, NC 27409

Phone: (336) 510-7840

www.guerrilla-rf.com