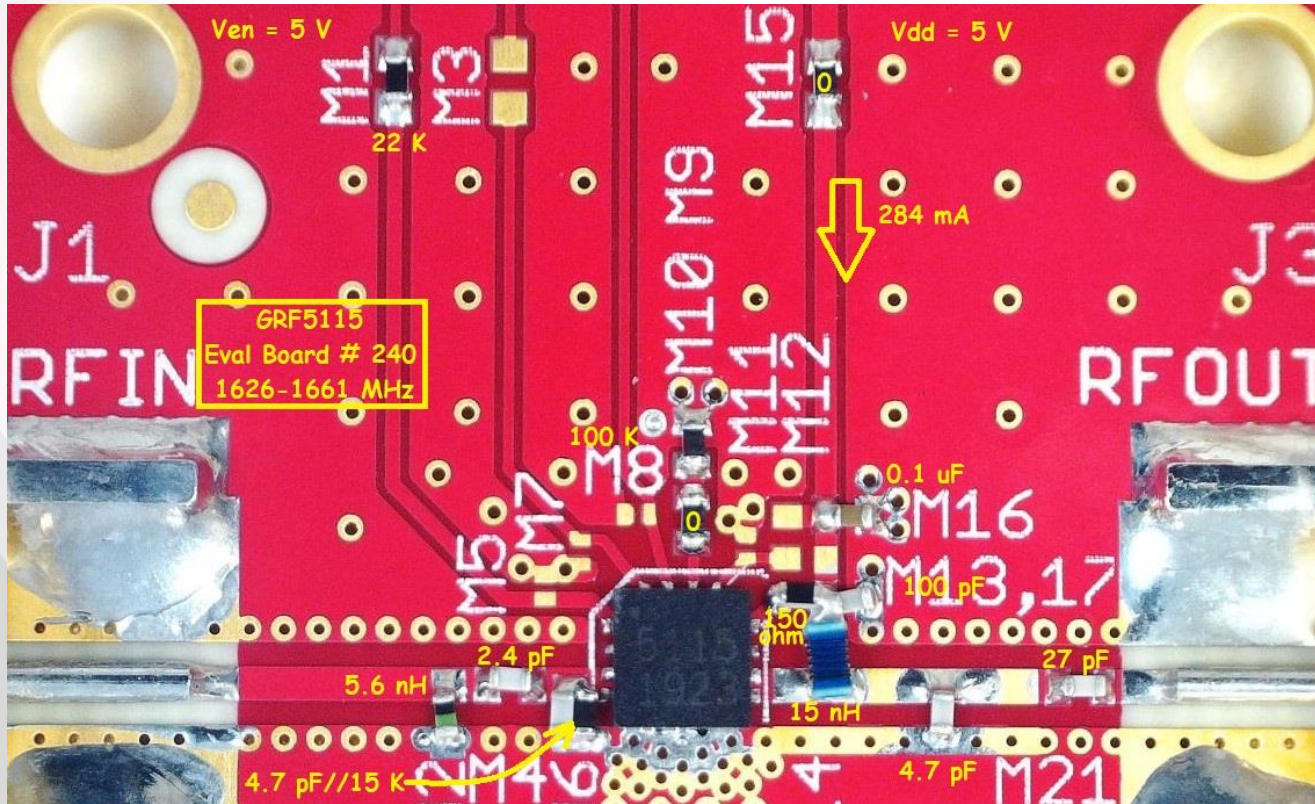




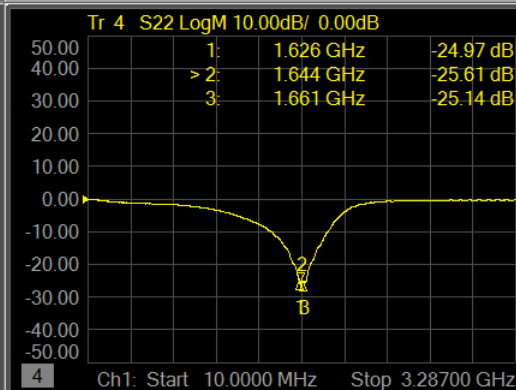
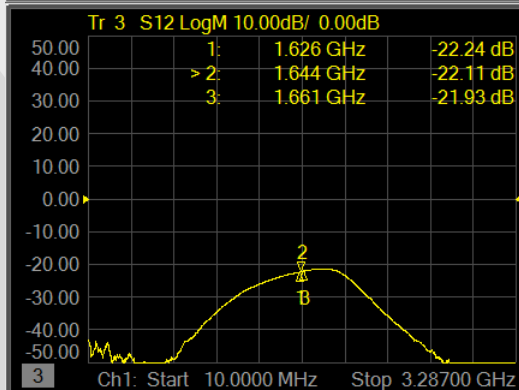
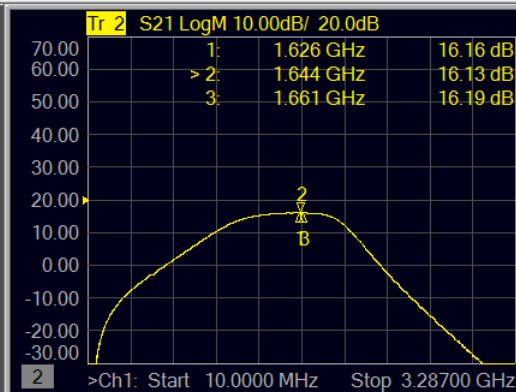
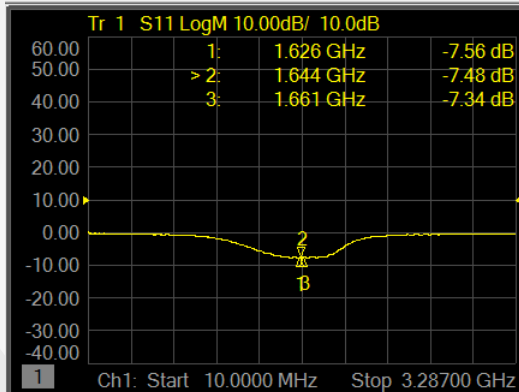
GRF5115 (1626 - 1661 MHz)

Evaluation Board # 240

# GRF5115 Schematic:



# GRF5115 Response:





# GRF5115 Data:

Descriptor	Freq MHz	Vdd	Iddq mA	Ven	Pout/Ptone dBm	Gain dB	IIP3 dBm	OIP3 dBm	IP1dB dBm	OP1dB dBm	Efficiency @ P1dB %	EVB NF
GRF5115_Eval # 240	1626	5.0	284.0	5.0	18.0	16.6	26.7	43.3	18.0	33.2	54.0	0.99
GRF5115_Eval # 240	1643.5	5.0	284.0	5.0	18.0	16.2	27.0	43.2	18.0	33.0	52.6	0.97
GRF5115_Eval # 240	1661	5.0	284.0	5.0	18.0	16.0	27.0	42.9	18.0	32.9	51.4	0.97



## **Jeff Broxson**

*Vice President - Sales*

Phone (336) 339-9314

[jbroxson@guerrilla-rf.com](mailto:jbroxson@guerrilla-rf.com)

## **Alan Ake**

*Vice President - Applications/Technical Marketing*

Phone (336) 708-4581

[aake@guerrilla-rf.com](mailto:aake@guerrilla-rf.com)

## **Guerrilla RF**

1196 Pleasant Ridge Road, Suite 5  
Greensboro, NC 27409

Phone: (336) 510-7840

[www.guerrilla-rf.com](http://www.guerrilla-rf.com)