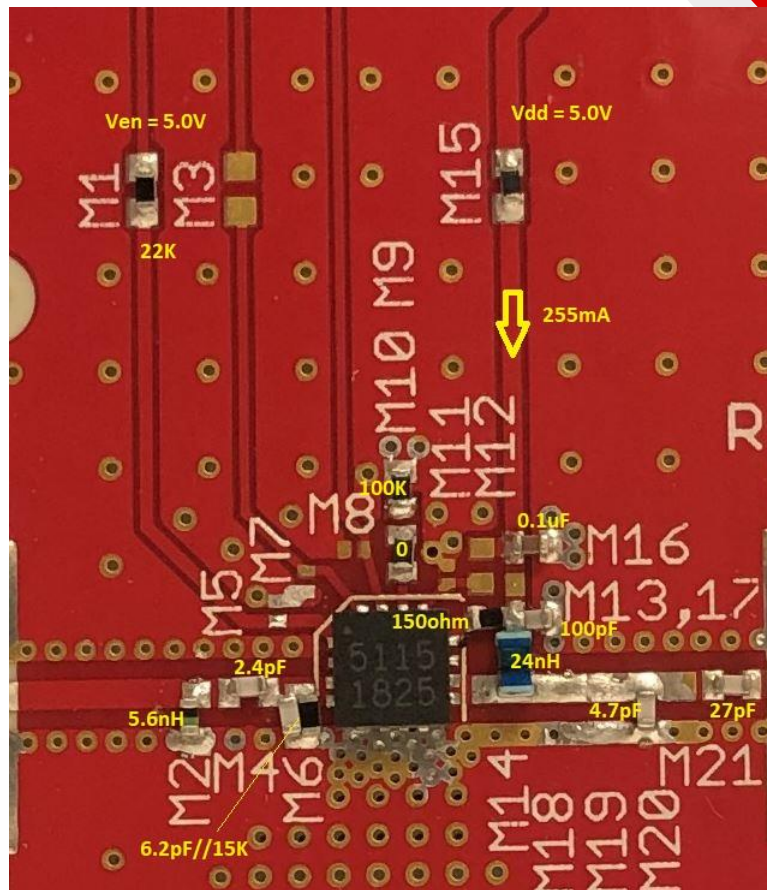


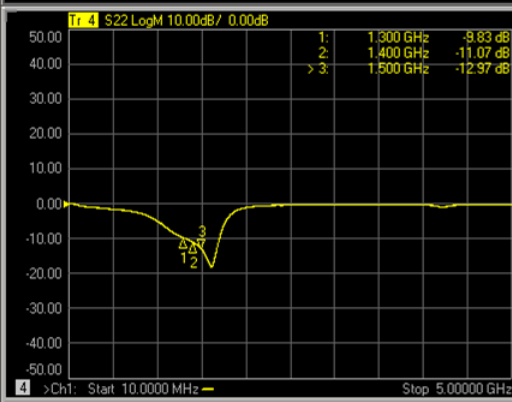
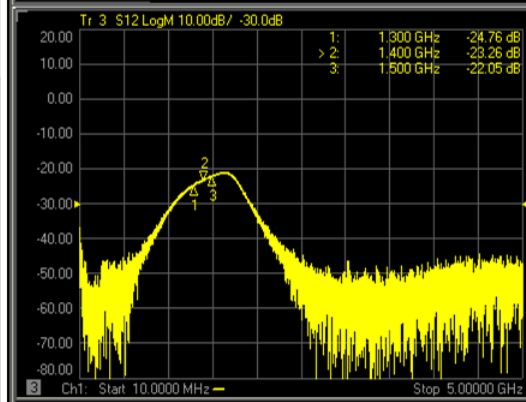
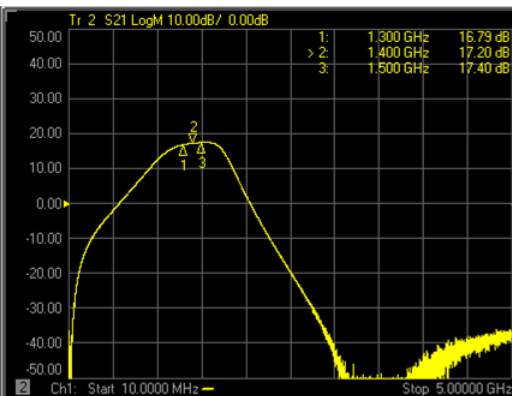
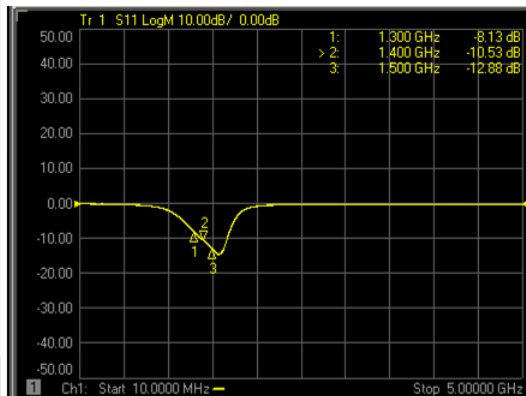


GRF5115 (1300 - 1500 MHz)

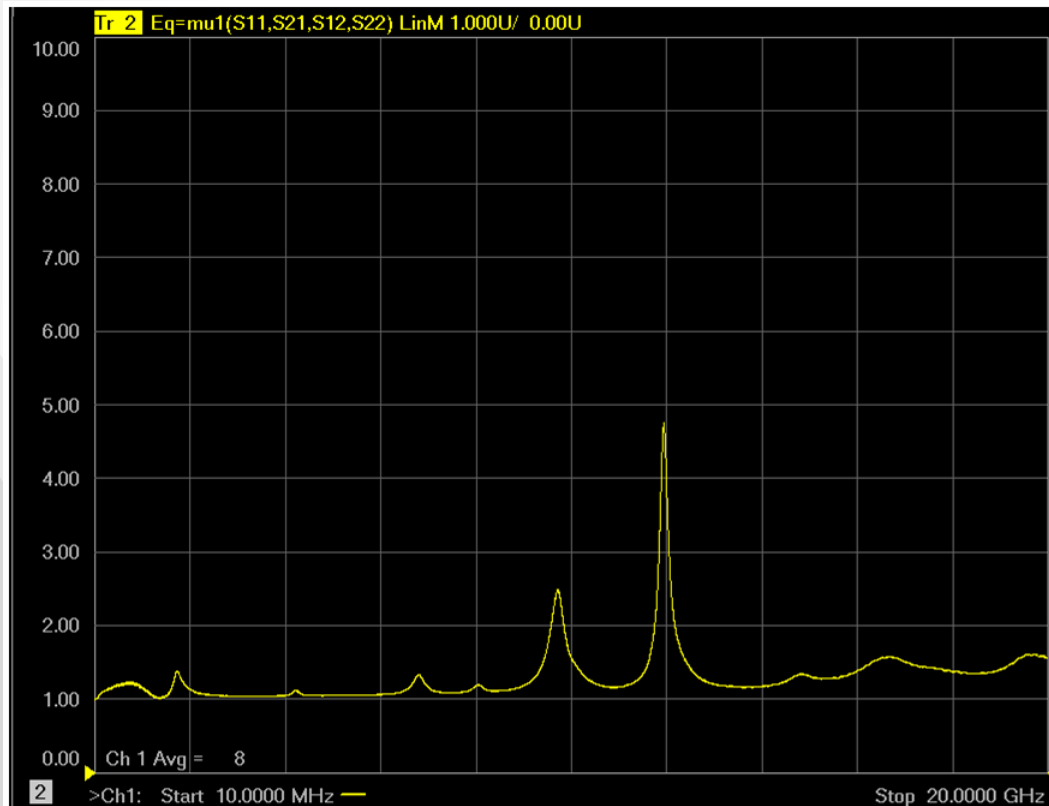
# GRF5115 Schematic:



# GRF5115 Response:



# GRF5115 Stability Mu Factor:



# GRF5115 Data:

Bias Point	Freq MHz	Vdd V	Ven V	Iddq mA	Pout/Ptone dBm	gain dB	tone spacing MHz	IIP3 dBm	OIP3 dBm	IP1dB dBm	OP1dB dBm	Eff %	EVB NF dB
5.0V/255mA	1300	5.0	5.0	256.6	22.0	16.9	2.0	28.1	45.0	16.0	31.9	46.0	1.30
5.0V/255mA	1350	5.0	5.0	256.6	22.0	16.9	2.0	28.8	45.7	16.2	32.1	47.3	1.21
5.0V/255mA	1400	5.0	5.0	256.6	22.0	17.2	2.0	28.8	46.0	16.3	32.5	50.4	1.17
5.0V/255mA	1450	5.0	5.0	256.6	22.0	17.3	2.0	28.9	46.2	16.5	32.8	51.9	1.19
5.0V/255mA	1500	5.0	5.0	256.6	22.0	17.3	2.0	28.7	46.0	16.4	32.7	53.7	1.20



## **Jeff Broxson**

*Vice President - Sales*

Phone (336) 339-9314

[jbroxson@guerrilla-rf.com](mailto:jbroxson@guerrilla-rf.com)

## **Alan Ake**

*Vice President - Applications/Technical Marketing*

Phone (336) 708-4581

[aake@guerrilla-rf.com](mailto:aake@guerrilla-rf.com)

## **Guerrilla RF**

1196 Pleasant Ridge Road, Suite 5  
Greensboro, NC 27409

Phone: (336) 510-7840

[www.guerrilla-rf.com](http://www.guerrilla-rf.com)