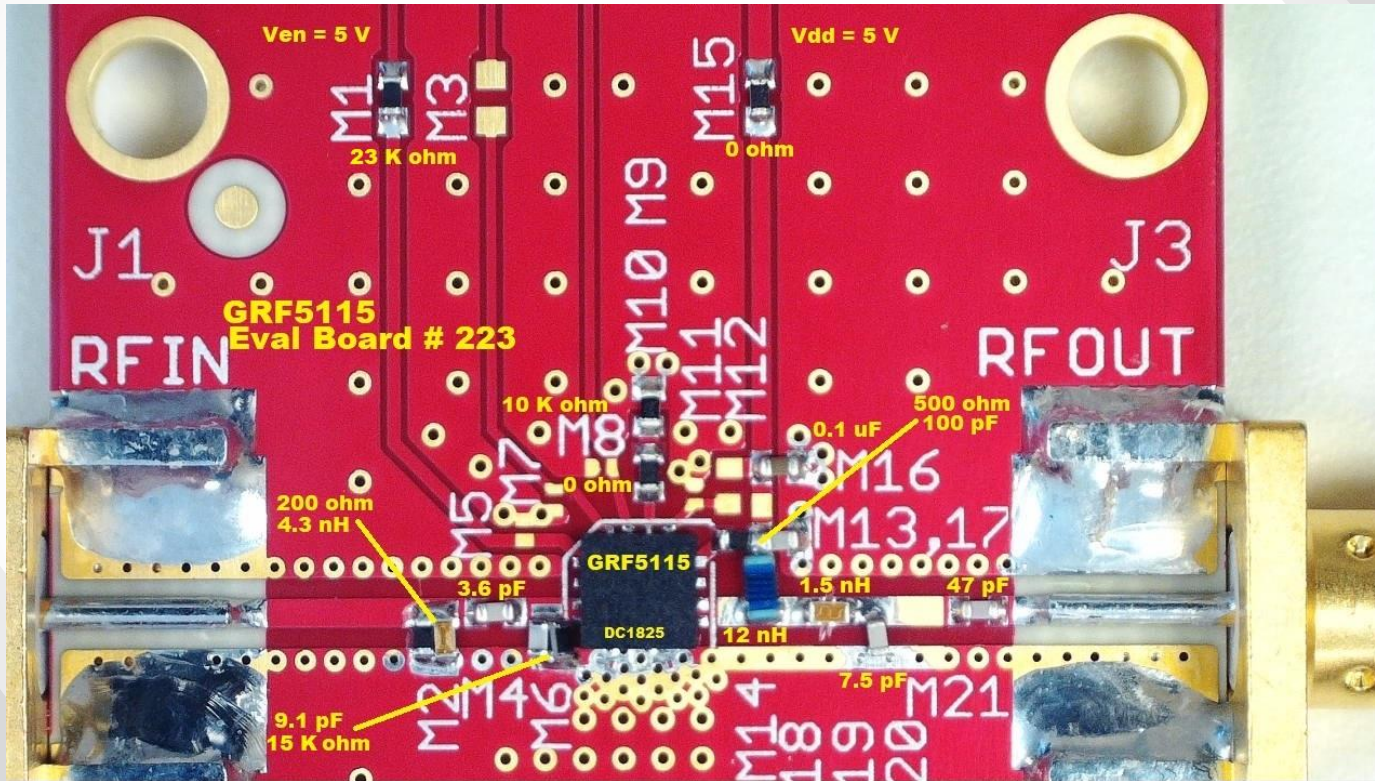




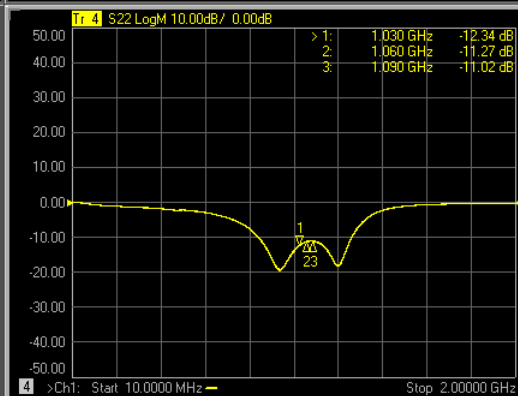
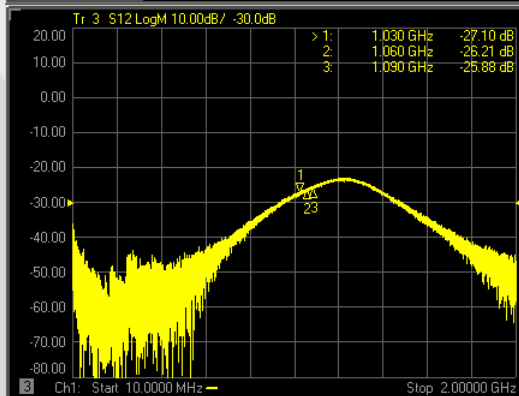
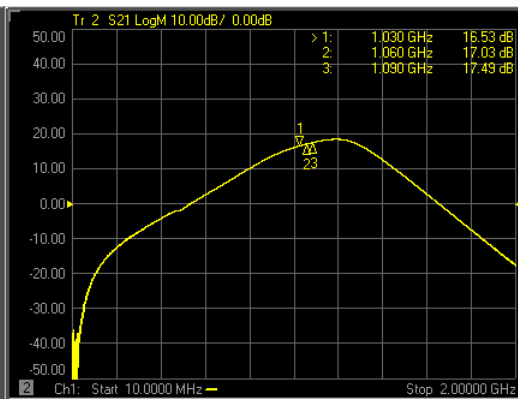
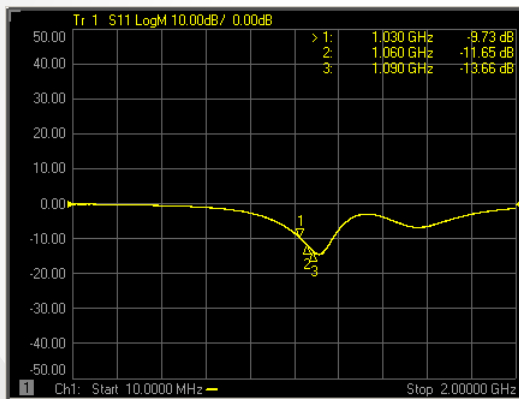
GRF5115 (1030 - 1090 MHz)

Evaluation Board # 223

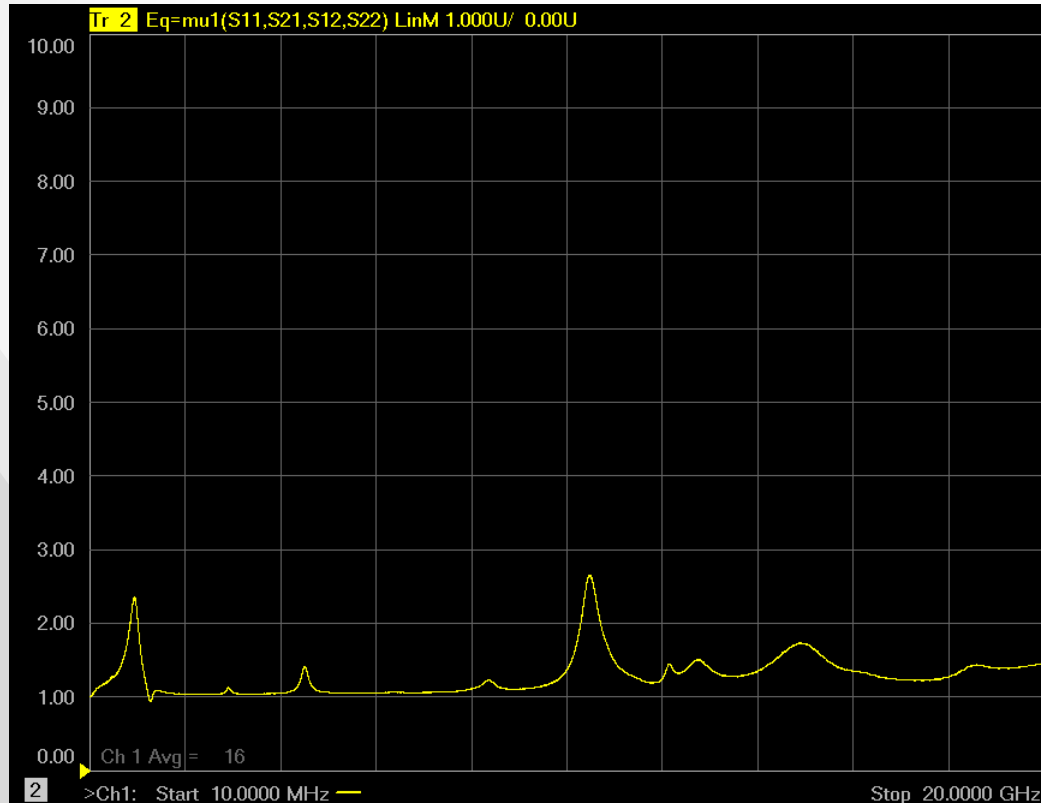
# GRF5115 Schematic:



# GRF5115 Response:



# GRF5115 Stability Mu Factor:



# GRF5115 Data:

Descriptor	Freq MHz	Vdd	Iddq mA	Ven	Ien mA	Pout/Ptone dBm	Gain dB	IIP3 dBm	OIP3 dBm	IP1dB dBm	OP1dB dBm	Efficiency @ P1dB %	NF
GRF5115 #223	1030	5.0	267.8	5.0	0.9	12.0	16.7	27.0	43.7	15.5	31.3	42.6	3.1
GRF5115 #223	1060	5.0	267.8	5.0	1.1	12.0	17.2	26.5	43.7	15.2	31.4	42.9	3
GRF5115 #223	1090	5.0	267.8	5.0	1.0	12.0	17.5	26.4	43.9	15.2	31.6	44.2	2.9



## **Jeff Broxson**

*Vice President - Sales*

Phone (336) 339-9314

[jbroxson@guerrilla-rf.com](mailto:jbroxson@guerrilla-rf.com)

## **Alan Ake**

*Vice President - Applications/Technical Marketing*

Phone (336) 708-4581

[aake@guerrilla-rf.com](mailto:aake@guerrilla-rf.com)

## **Guerrilla RF**

1196 Pleasant Ridge Road, Suite 5  
Greensboro, NC 27409

Phone: (336) 510-7840

[www.guerrilla-rf.com](http://www.guerrilla-rf.com)