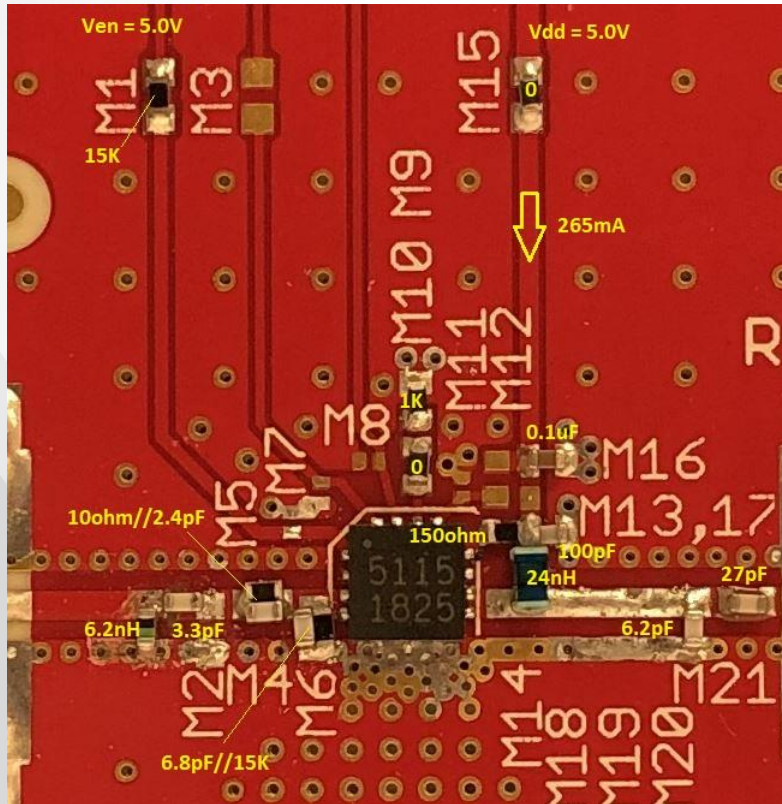


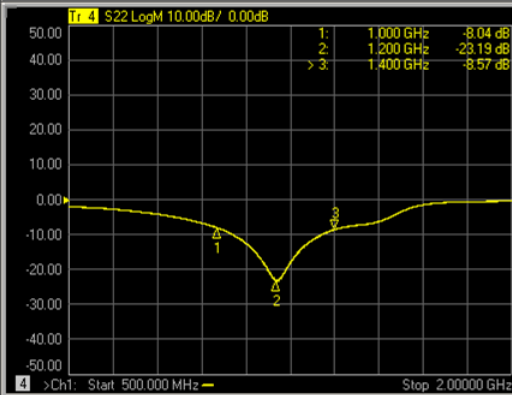
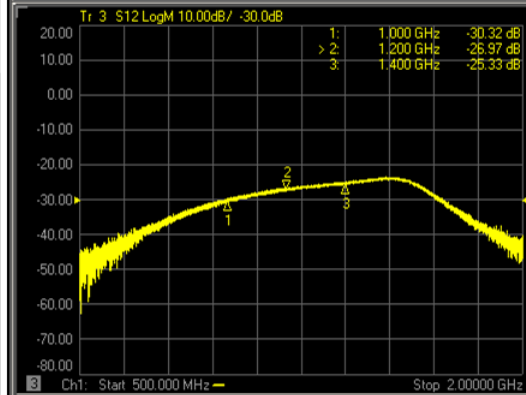
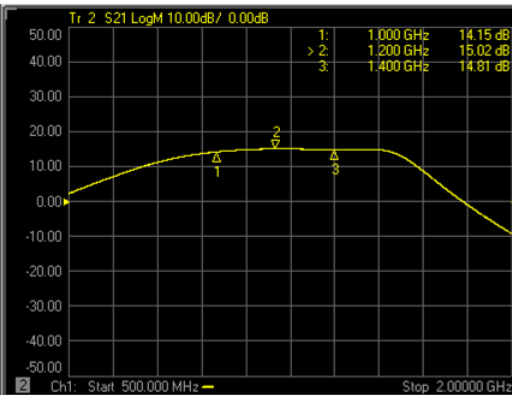
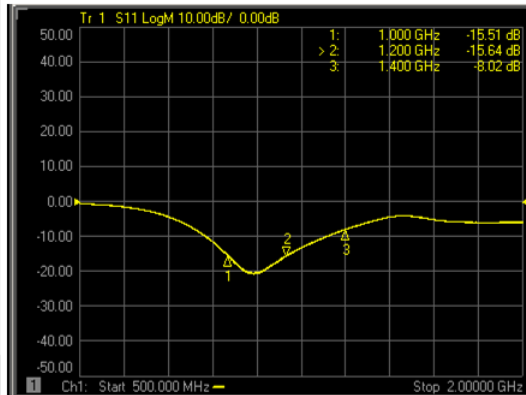


GRF5115 (1000 - 1400 MHz)

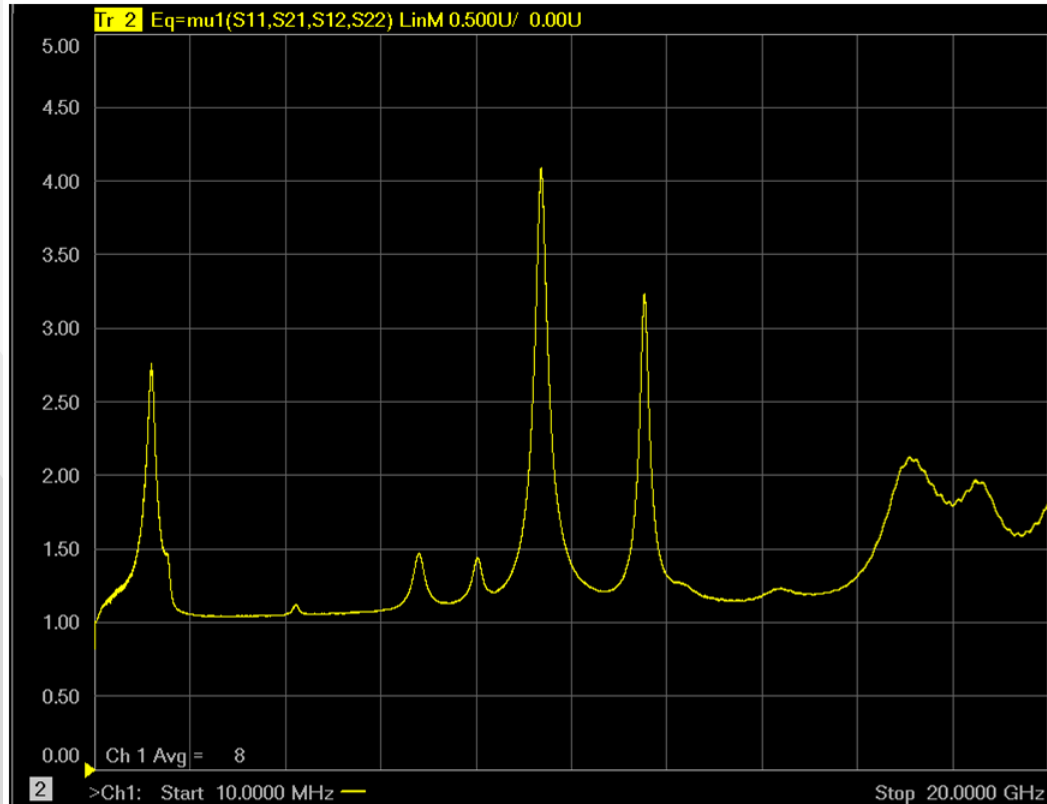
GRF5115 Schematic:



GRF5115 Response:



GRF5115 Stability Mu Factor:



GRF5115 Data:

Bias Point	Freq MHz	Vdd V	Ven V	Iddq mA	Pout/Ptone dBm	gain dB	tone spacing MHz	IIP3 dBm	OIP3 dBm	IP1dB dBm	OP1dB dBm	Eff %	EVB NF dB
5.0V/265mA	1000	5.0	5.0	265.0	18.0	14.4	2.0	30.7	45.1	17.4	30.7	39.1	3.2
5.0V/265mA	1100	5.0	5.0	265.0	18.0	14.8	2.0	31.0	45.8	17.9	31.7	42.2	2.9
5.0V/265mA	1200	5.0	5.0	265.0	18.0	15.3	2.0	33.2	48.5	18.0	32.3	44.5	2.8
5.0V/265mA	1300	5.0	5.0	265.0	18.0	15.3	2.0	33.7	49.0	18.0	32.2	45.4	2.7
5.0V/265mA	1400	5.0	5.0	265.0	18.0	14.8	2.0	31.1	45.9	17.0	30.7	40.2	2.7



Jeff Broxson

Vice President - Sales

Phone (336) 339-9314

jbroxson@guerrilla-rf.com

Alan Ake

Vice President - Applications/Technical Marketing

Phone (336) 708-4581

aake@guerrilla-rf.com

Guerrilla RF

1196 Pleasant Ridge Road, Suite 5
Greensboro, NC 27409

Phone: (336) 510-7840

www.guerrilla-rf.com