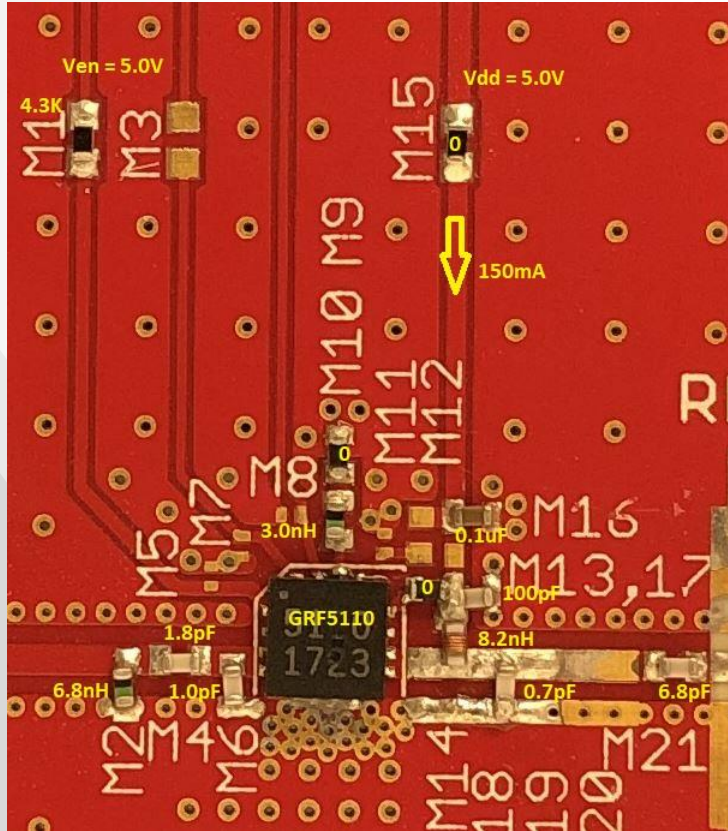


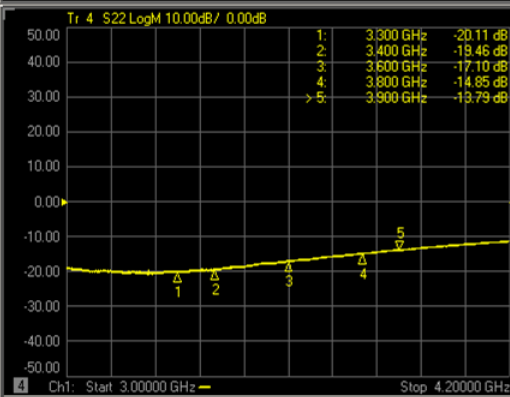
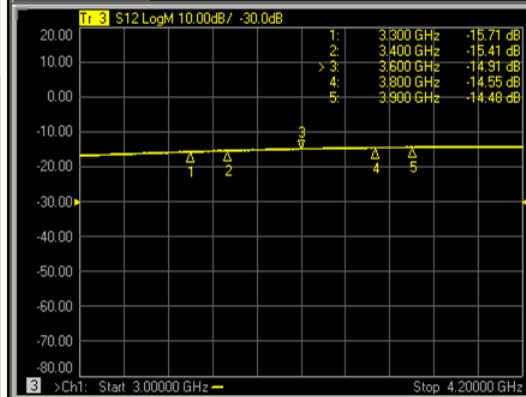
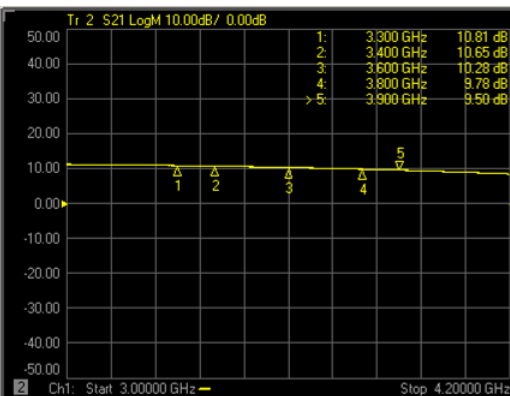
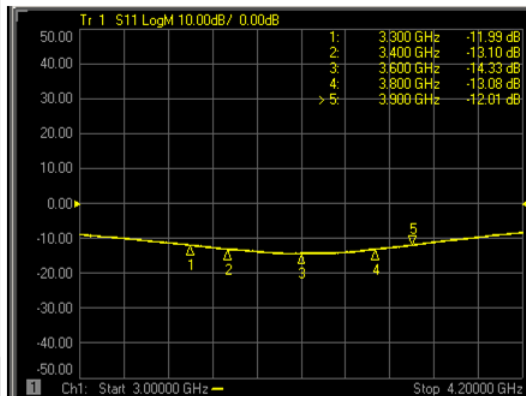


GRF5110 (3300 - 3900 MHz)

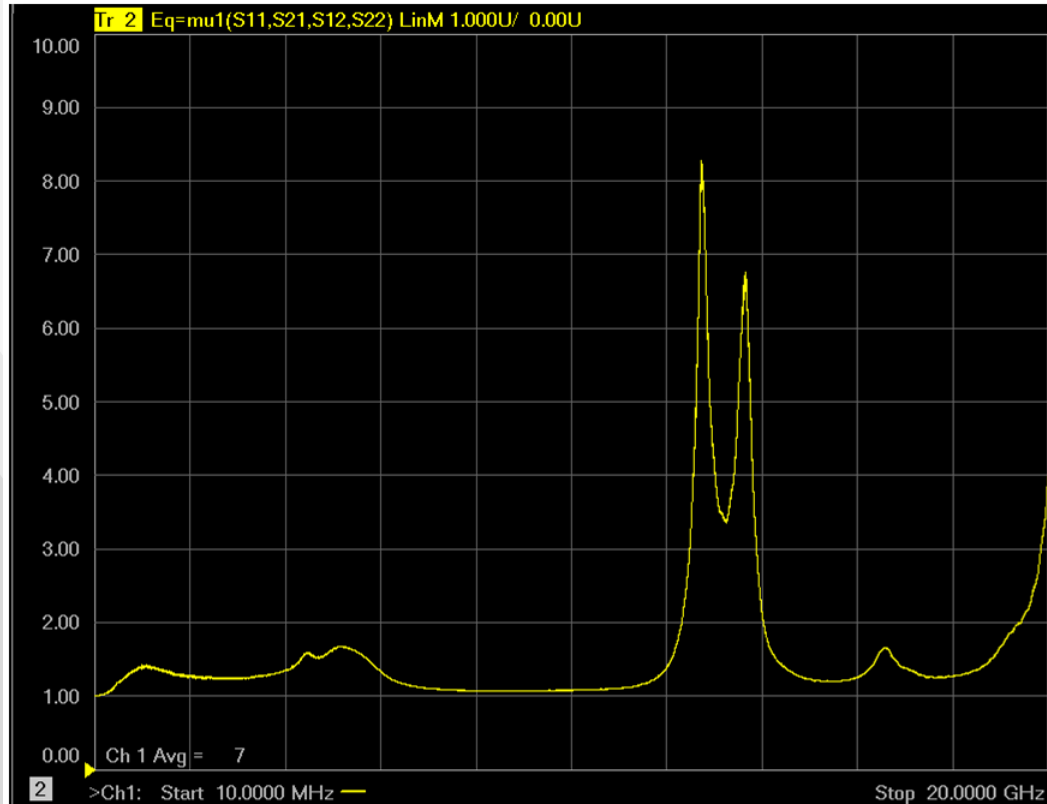
GRF5110 Schematic:



GRF5110 Response:



GRF5110 Stability Mu Factor:



GRF5110 Data:

Bias Point	Freq MHz	Vdd V	Ven V	Iddq mA	Pout/Ptone dBm	gain dB	tone spacing MHz	IIP3 dBm	OIP3 dBm	IP1dB dBm	OP1dB dBm	Eff %	EVB NF dB
5.0V/150mA	3300	5.0	5.0	148.9	8.0	10.8	2.0	36.8	47.6	18.7	28.5	57.3	0.88
5.0V/150mA	3400	5.0	5.0	148.9	8.0	10.7	2.0	33.9	44.6	18.7	28.4	55.2	0.93
5.0V/150mA	3600	5.0	5.0	148.9	8.0	10.3	2.0	33.2	43.5	19.1	28.4	56.8	0.93
5.0V/150mA	3800	5.0	5.0	148.9	8.0	9.8	2.0	34.8	44.6	19.5	28.3	55.3	0.93
5.0V/150mA	3900	5.0	5.0	148.9	8.0	9.5	2.0	38.0	47.5	19.7	28.2	54.1	1.00



Jeff Broxson

Vice President - Sales

Phone (336) 339-9314

jbroxson@guerrilla-rf.com

Alan Ake

Vice President - Applications/Technical Marketing

Phone (336) 708-4581

aake@guerrilla-rf.com

Guerrilla RF

1196 Pleasant Ridge Road, Suite 5
Greensboro, NC 27409

Phone: (336) 510-7840

www.guerrilla-rf.com