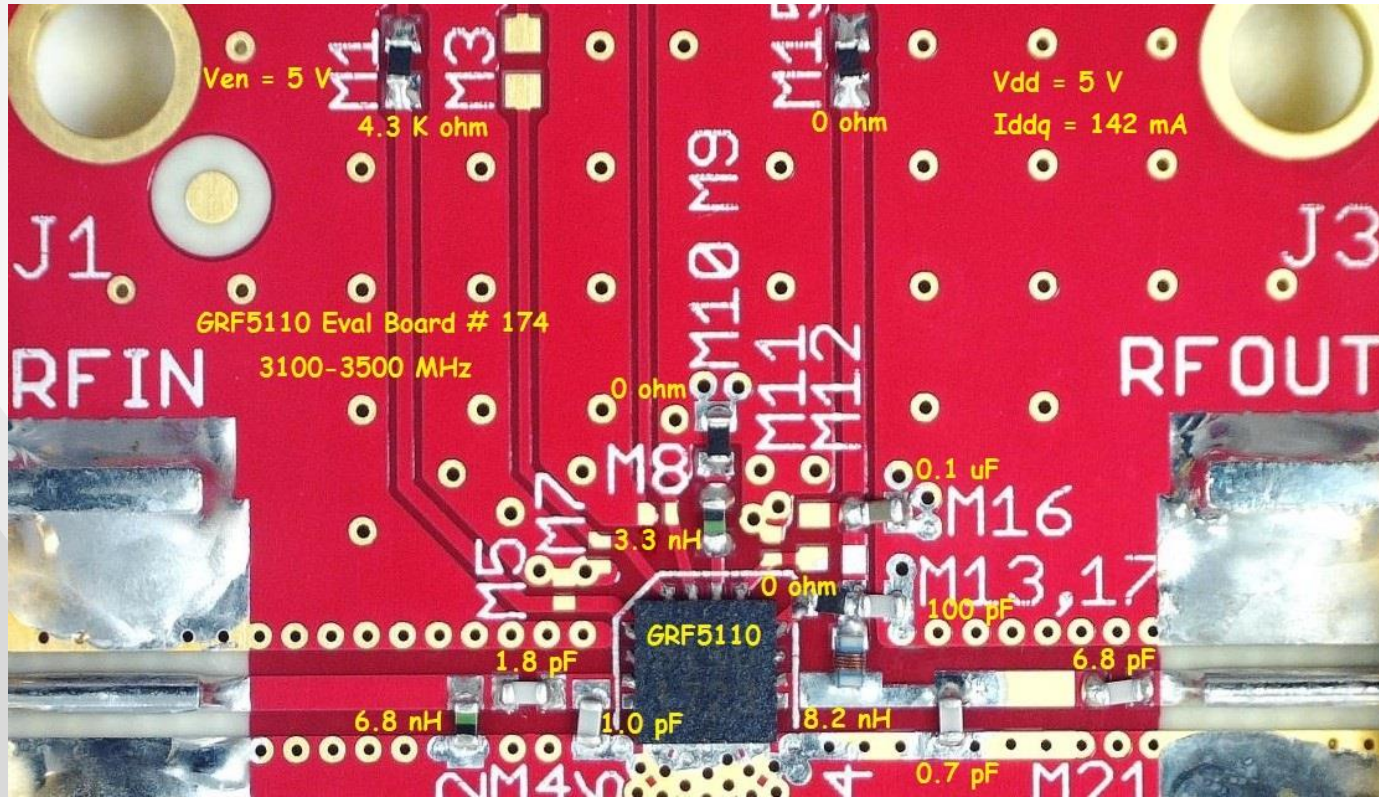




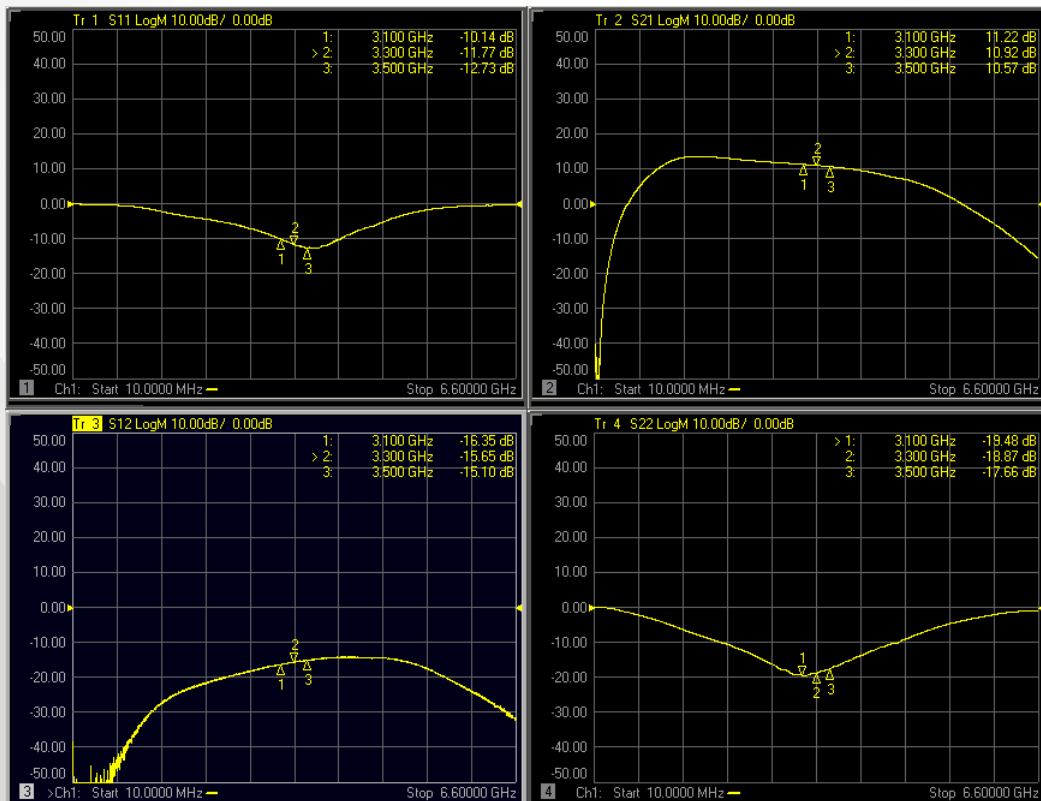
GRF5110 (3100 - 3500 MHz)

Evaluation Board # 174

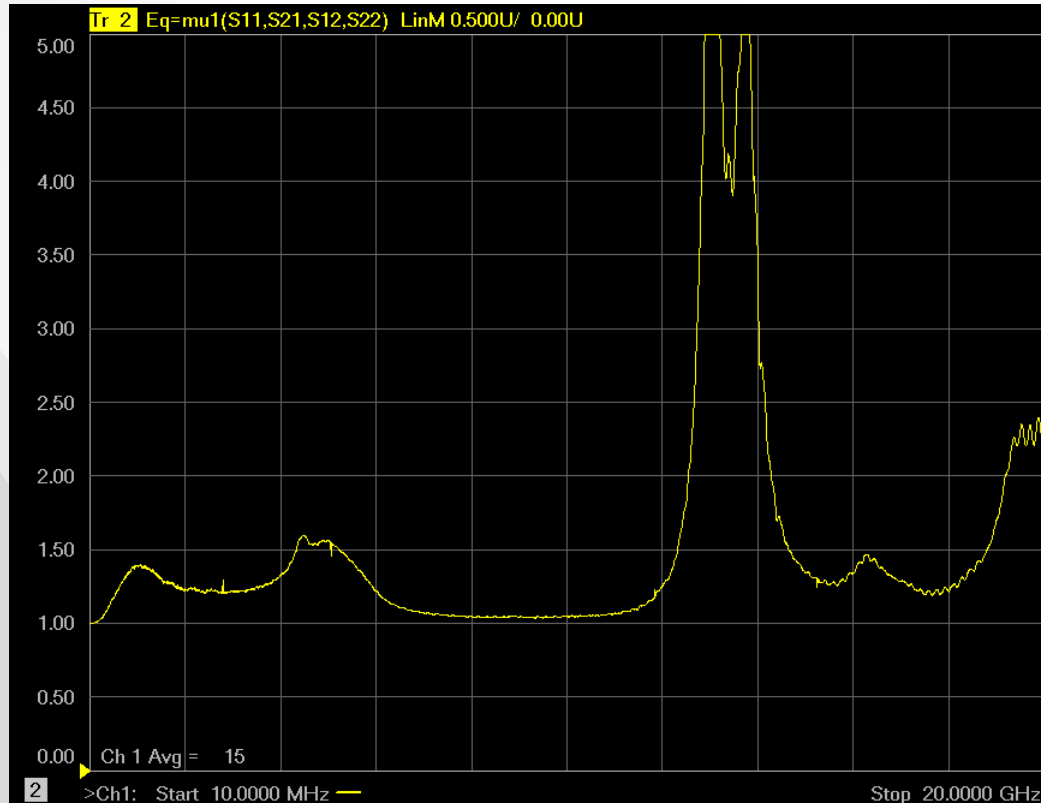
GRF5110 Schematic:



GRF5110 Response:



GRF5110 Stability Mu Factor:



GRF5110 Data:

Descriptor	Freq MHz	Vdd	Iddq mA	Ven	Ien mA	Pout/Ptone dBm	Gain dB	IIP3 dBm	OIP3 dBm	IP1dB dBm	OP1dB dBm	NF
GRF5110_Eval # 174	3100	5.0	141.8	5.0	1.6	8.0	11.0	34.8	45.8	18.2	28.2	0.93
GRF5110_Eval # 174	3300	5.0	141.8	5.0	1.6	8.0	10.7	33.0	43.6	19.0	28.4	0.84
GRF5110_Eval # 174	3500	5.0	141.8	5.0	1.6	8.0	10.5	33.7	44.1	19.0	28.3	0.77



Jeff Broxson

Vice President - Sales

Phone (336) 339-9314

jbroxson@guerrilla-rf.com

Alan Ake

Vice President - Applications/Technical Marketing

Phone (336) 708-4581

aake@guerrilla-rf.com

Guerrilla RF

1196 Pleasant Ridge Road, Suite 5
Greensboro, NC 27409

Phone: (336) 510-7840

www.guerrilla-rf.com