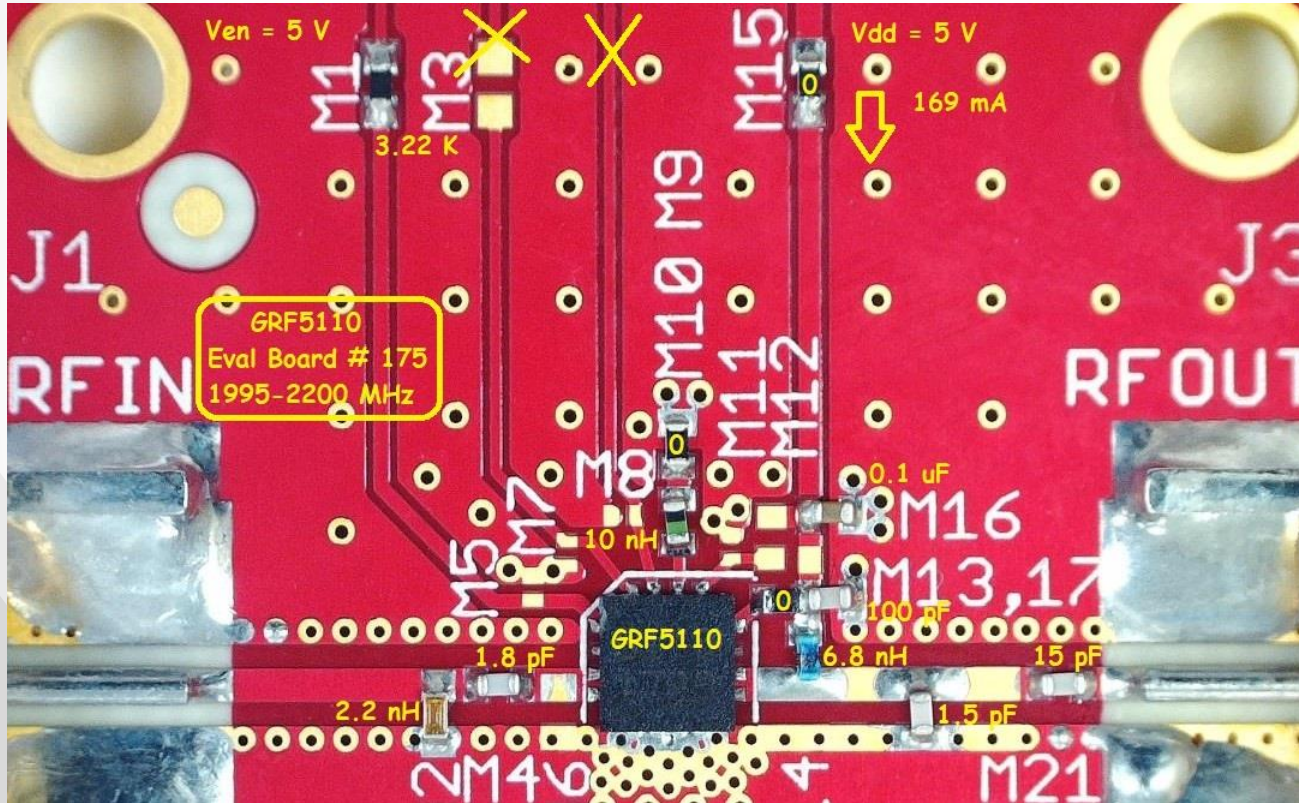




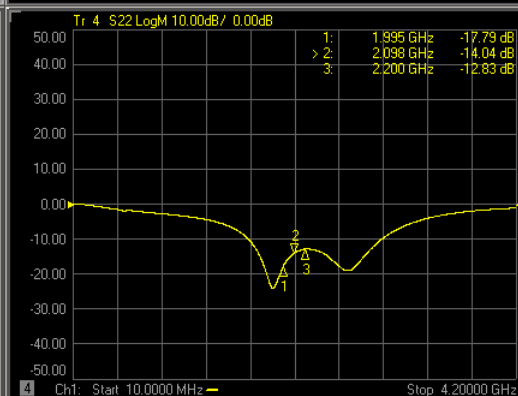
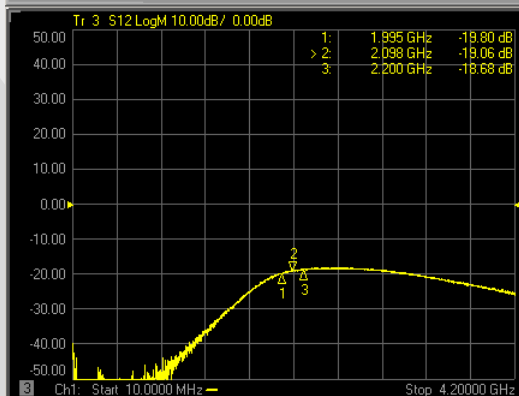
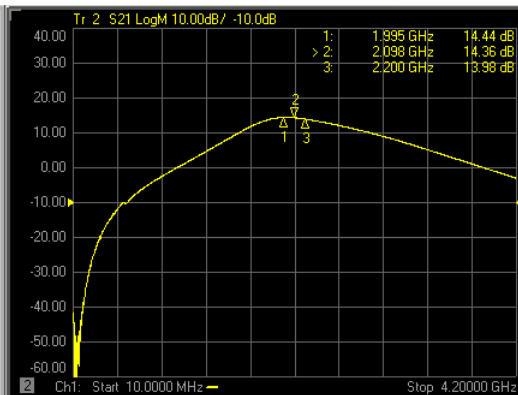
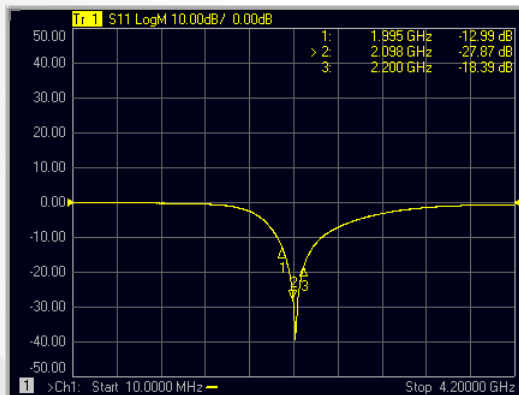
GRF5110 (1995 - 2200 MHz)

Evaluation Board # 175

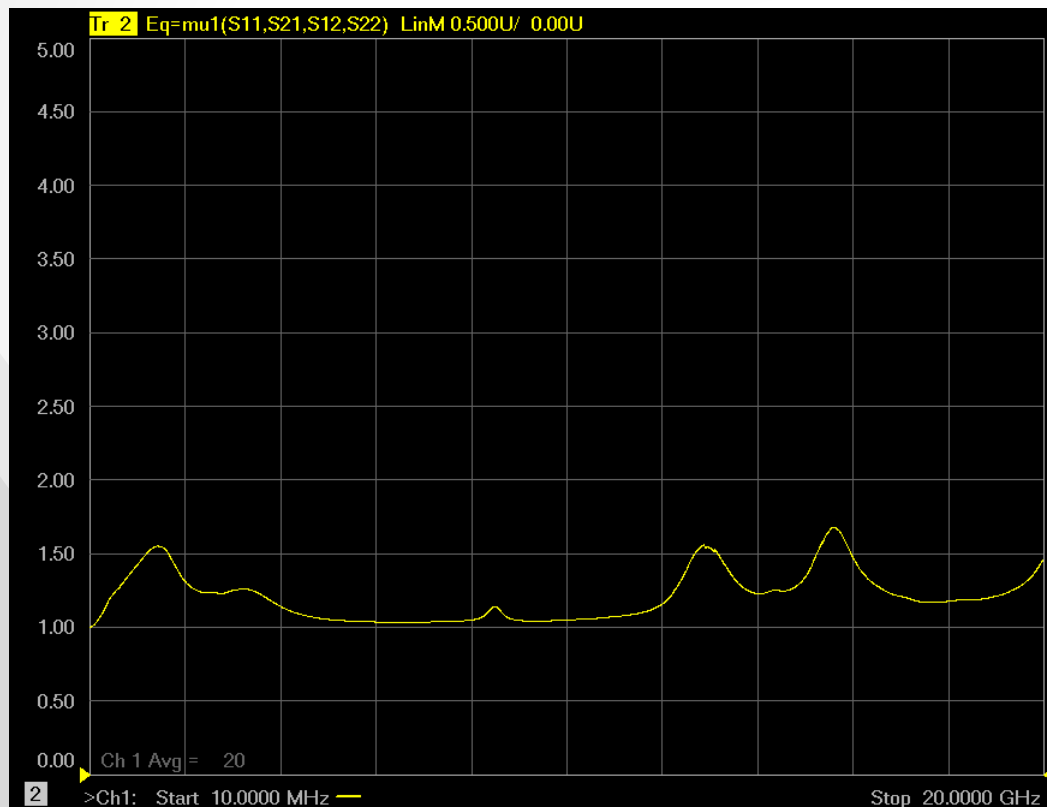
GRF5110 Schematic:



GRF5110 Response:



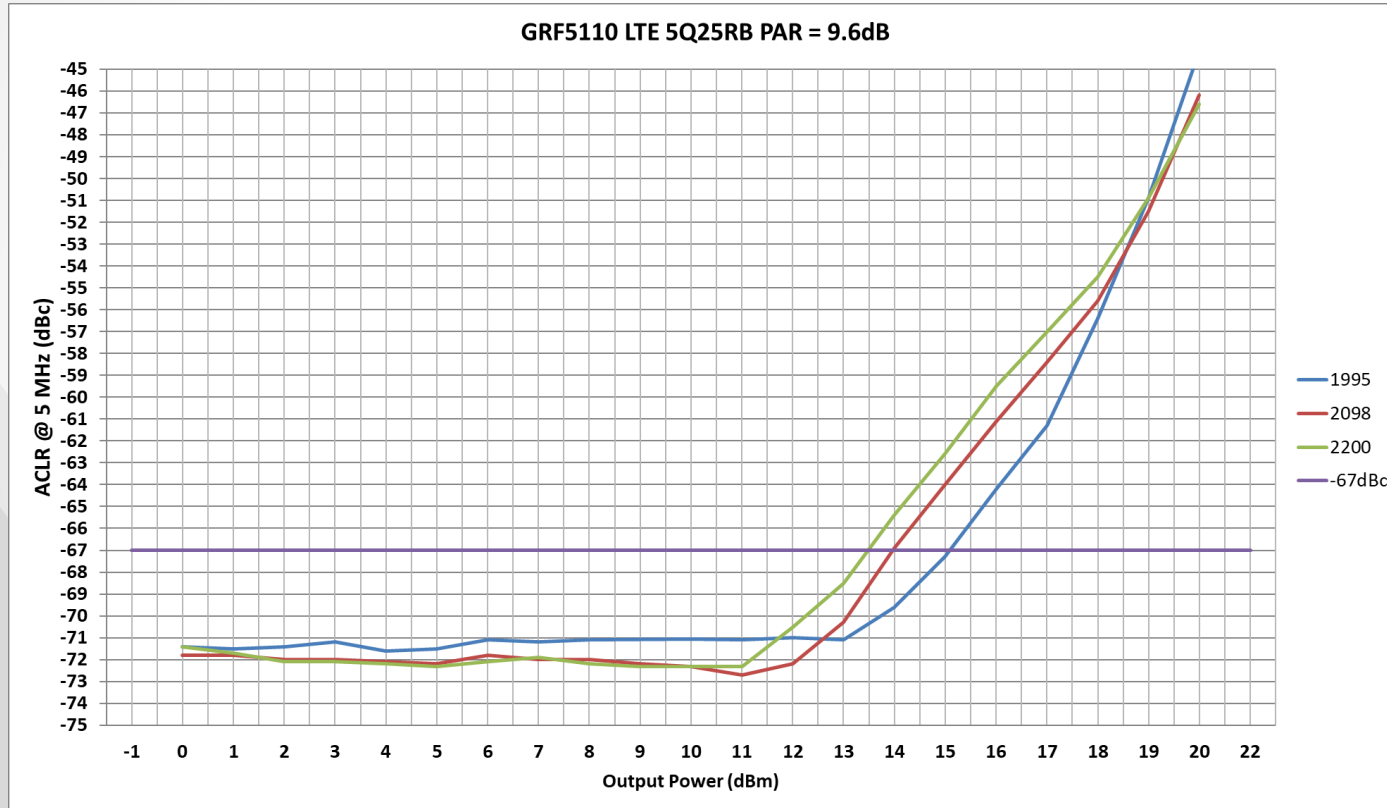
GRF5110 Stability Mu Factor:



GRF5110 Data:

Descriptor	Freq MHz	Vdd	Ven	Iddq mA	Pout/Ptone dBm	Gain dB	Tone Spacing MHz	IIP3 dBm	OIP3 dBm	IP1dB dBm	OP1dB dBm	Eff %	EVB NF
GRF5110_Eval # 175	1995	5.0	5.0	169.3	10.0	14.4	2.0	36.1	50.4	15.0	28.2	52.7	1.16
GRF5110_Eval # 175	2098	5.0	5.0	169.3	10.0	14.3	2.0	33.0	47.3	16.0	28.7	56.2	1.04
GRF5110_Eval # 175	2200	5.0	5.0	169.3	10.0	14.0	2.0	32.7	46.6	16.0	28.8	56.4	1.02

GRF5110 ACLR Data:





Jeff Broxson

Vice President - Sales

Phone (336) 339-9314

jbroxson@guerrilla-rf.com

Alan Ake

Vice President - Applications/Technical Marketing

Phone (336) 708-4581

aake@guerrilla-rf.com

Guerrilla RF

1196 Pleasant Ridge Road, Suite 5
Greensboro, NC 27409

Phone: (336) 510-7840

www.guerrilla-rf.com