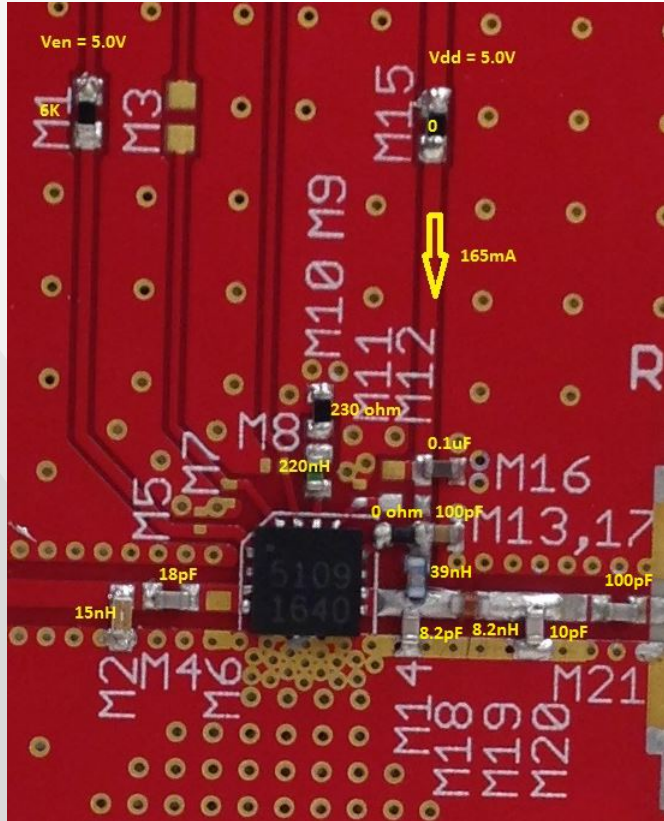


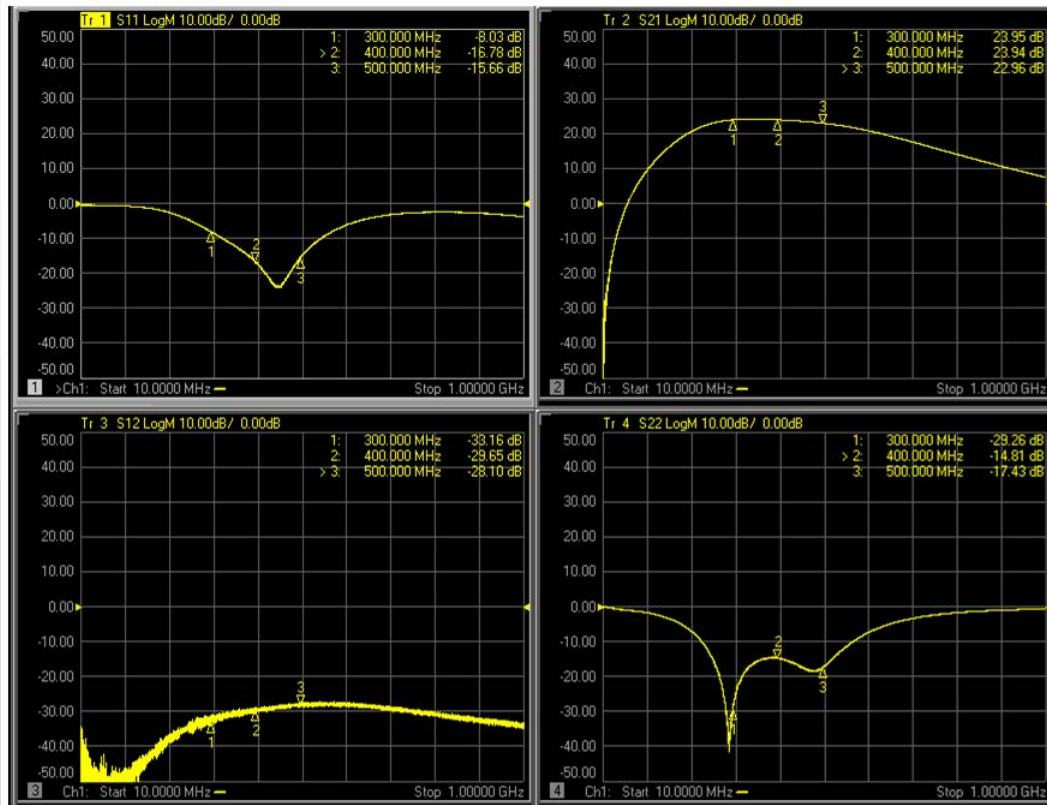


GRF5109 (300 - 500 MHz)

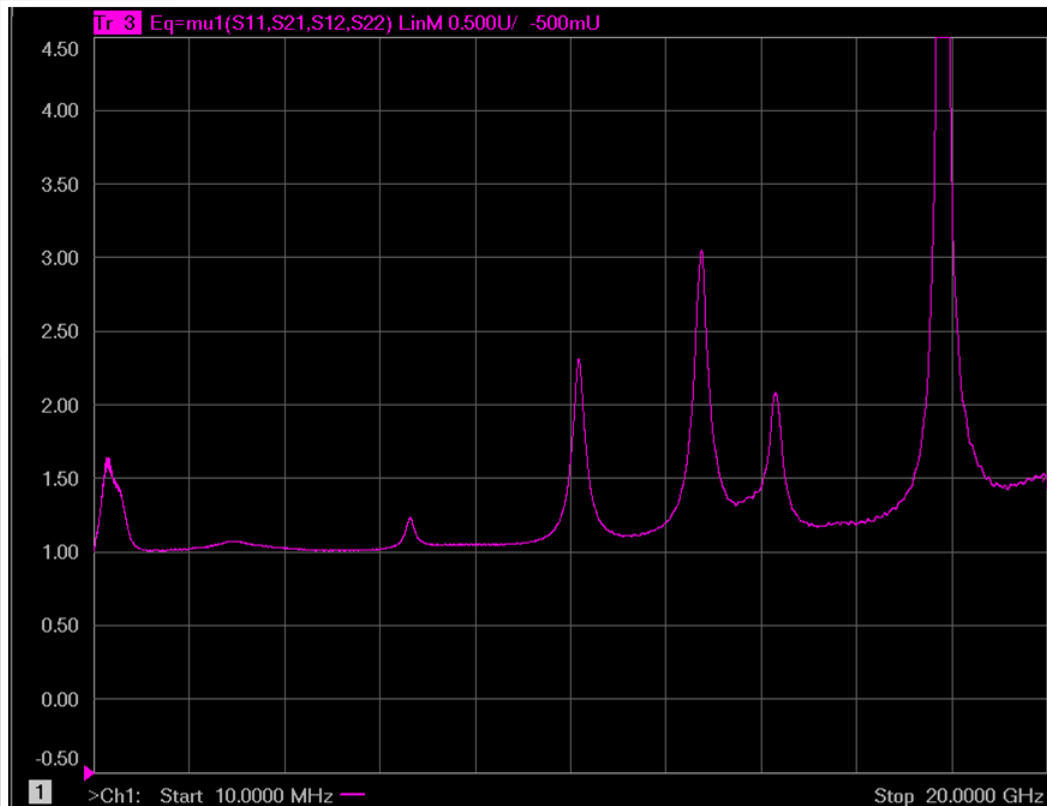
# GRF5109 Schematic:



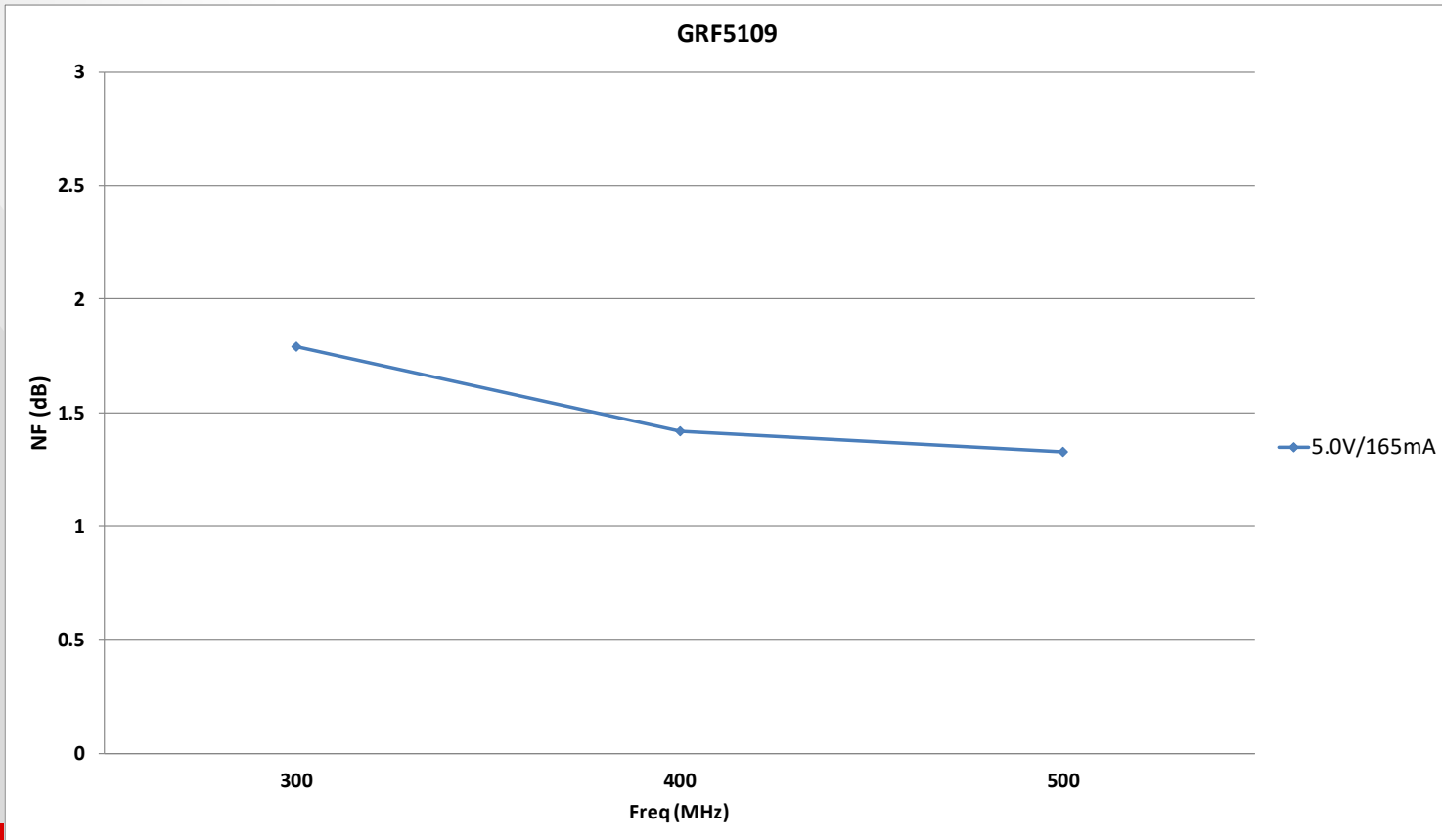
# GRF5109 Response:



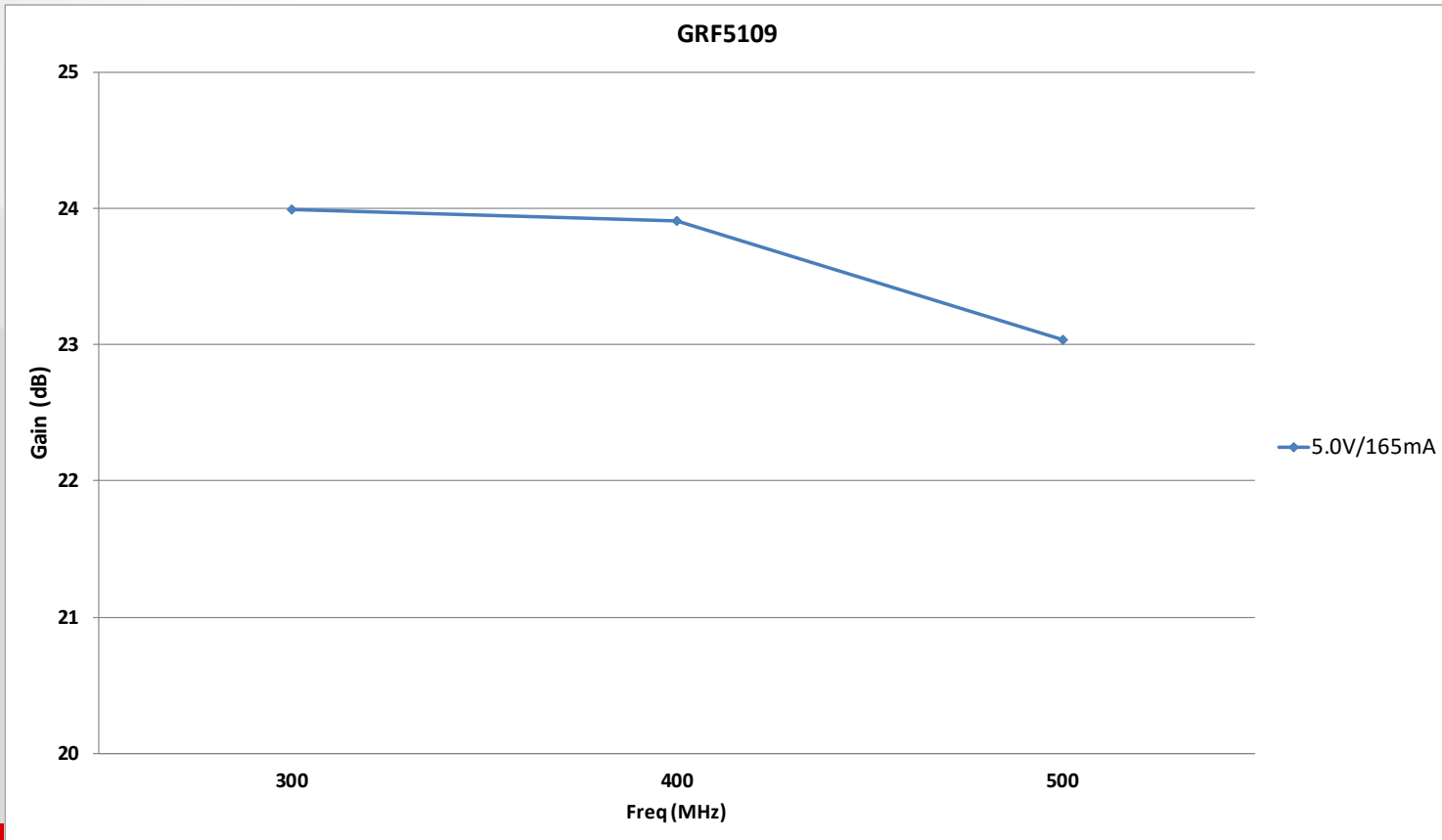
# GRF5109 Stability Mu Factor:



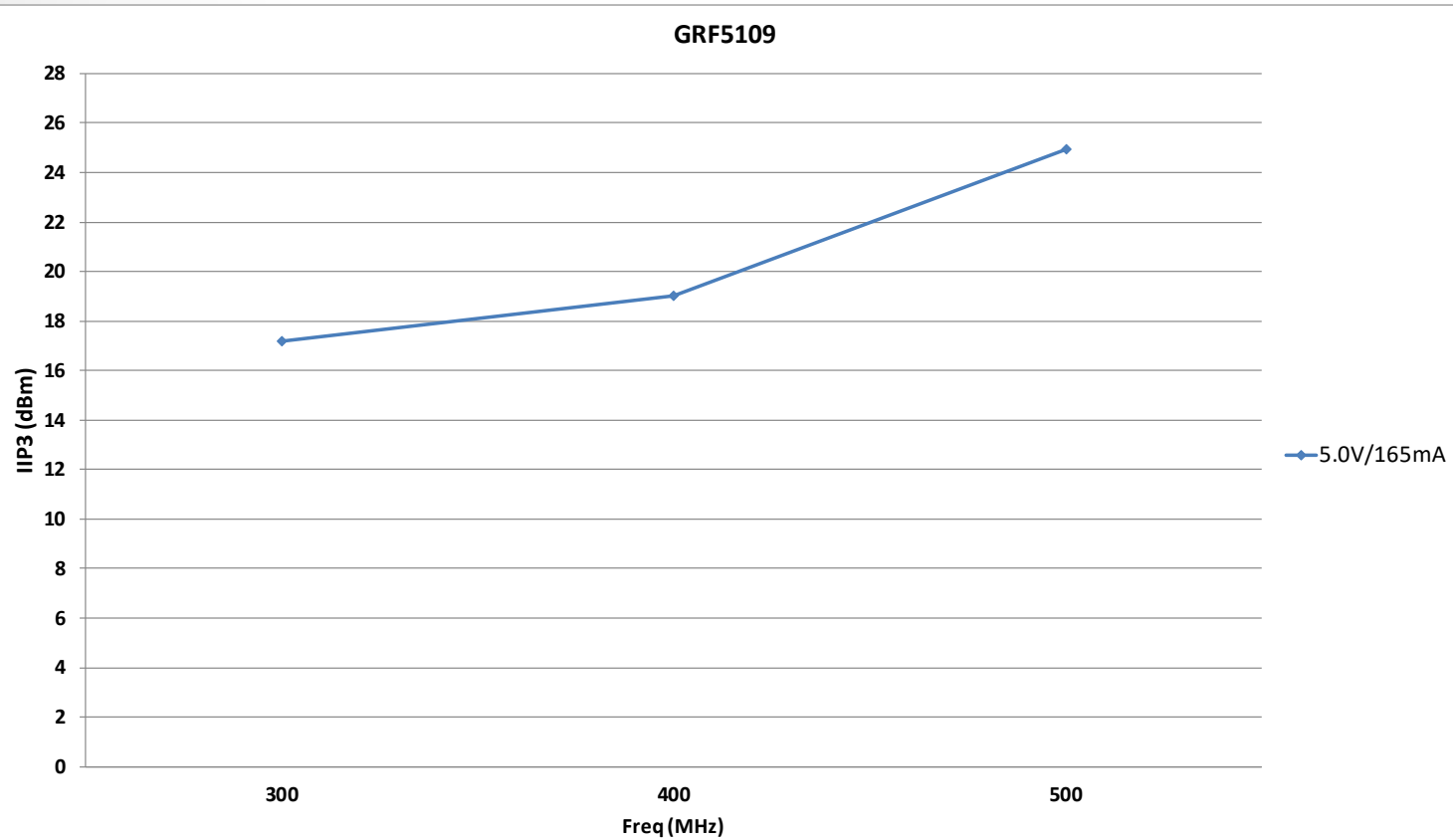
# GRF5109 Noise Figure:



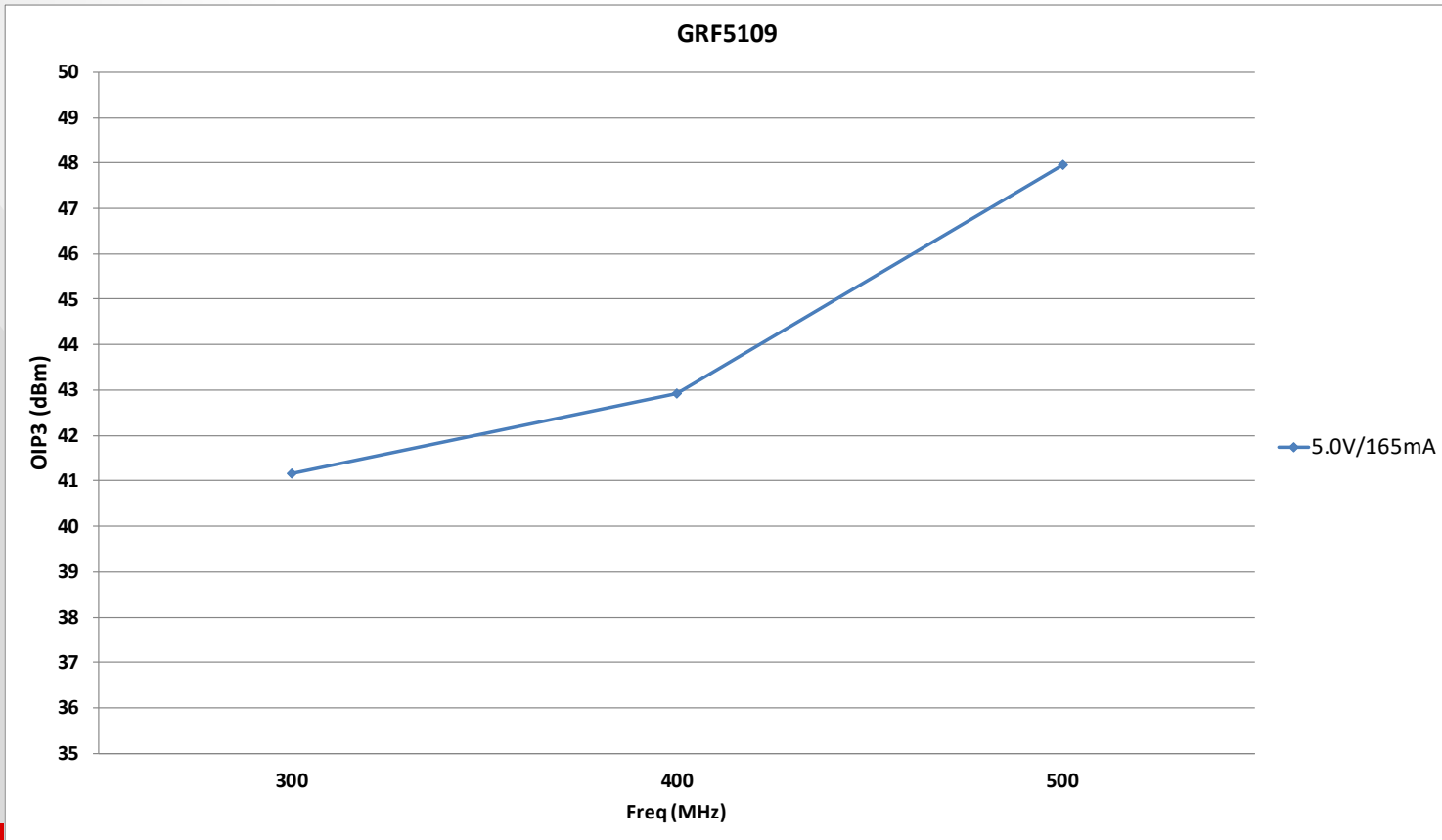
# GRF5109 Gain:



# GRF5109 IIP3:

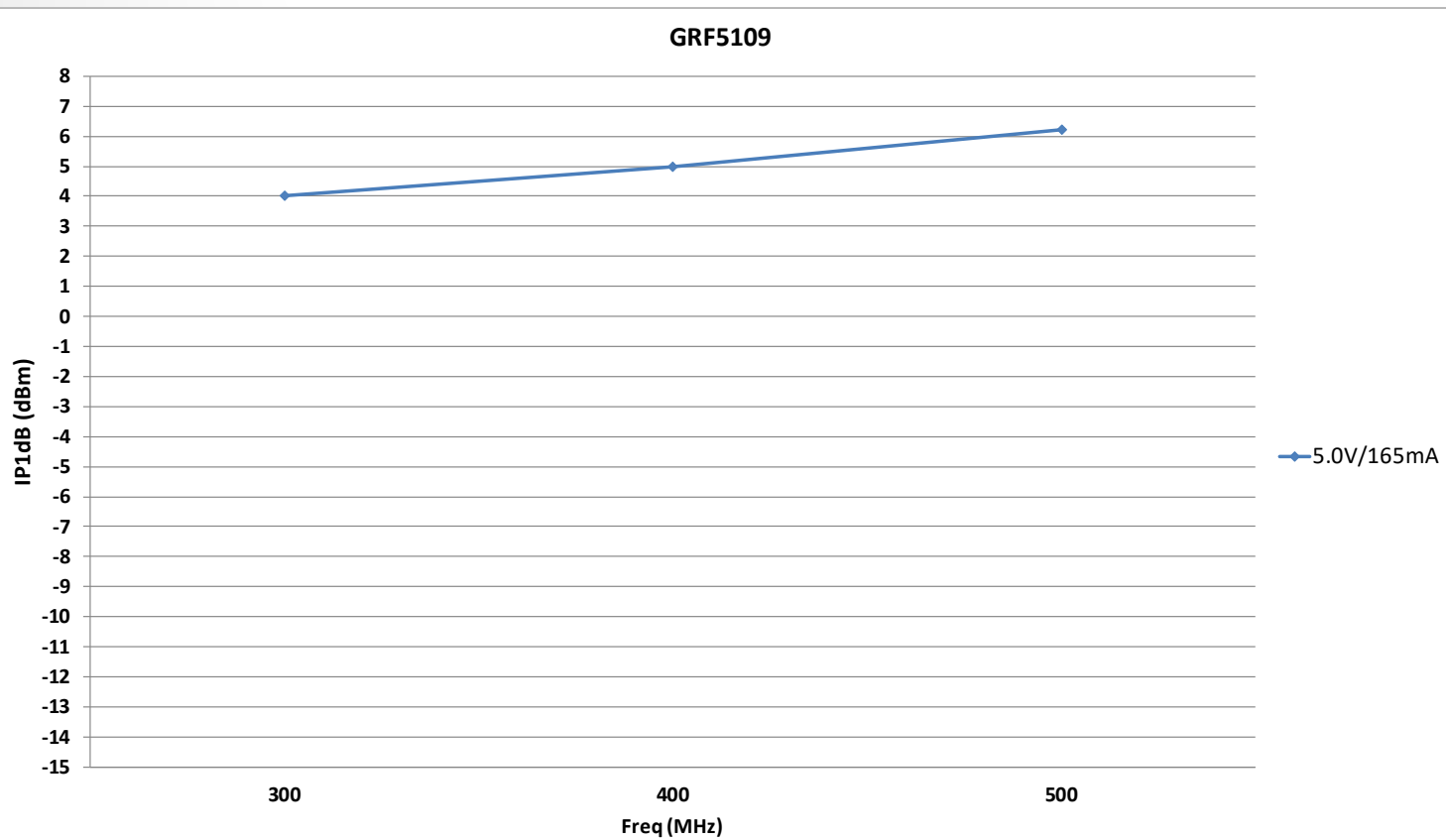


# GRF5109 OIP3:

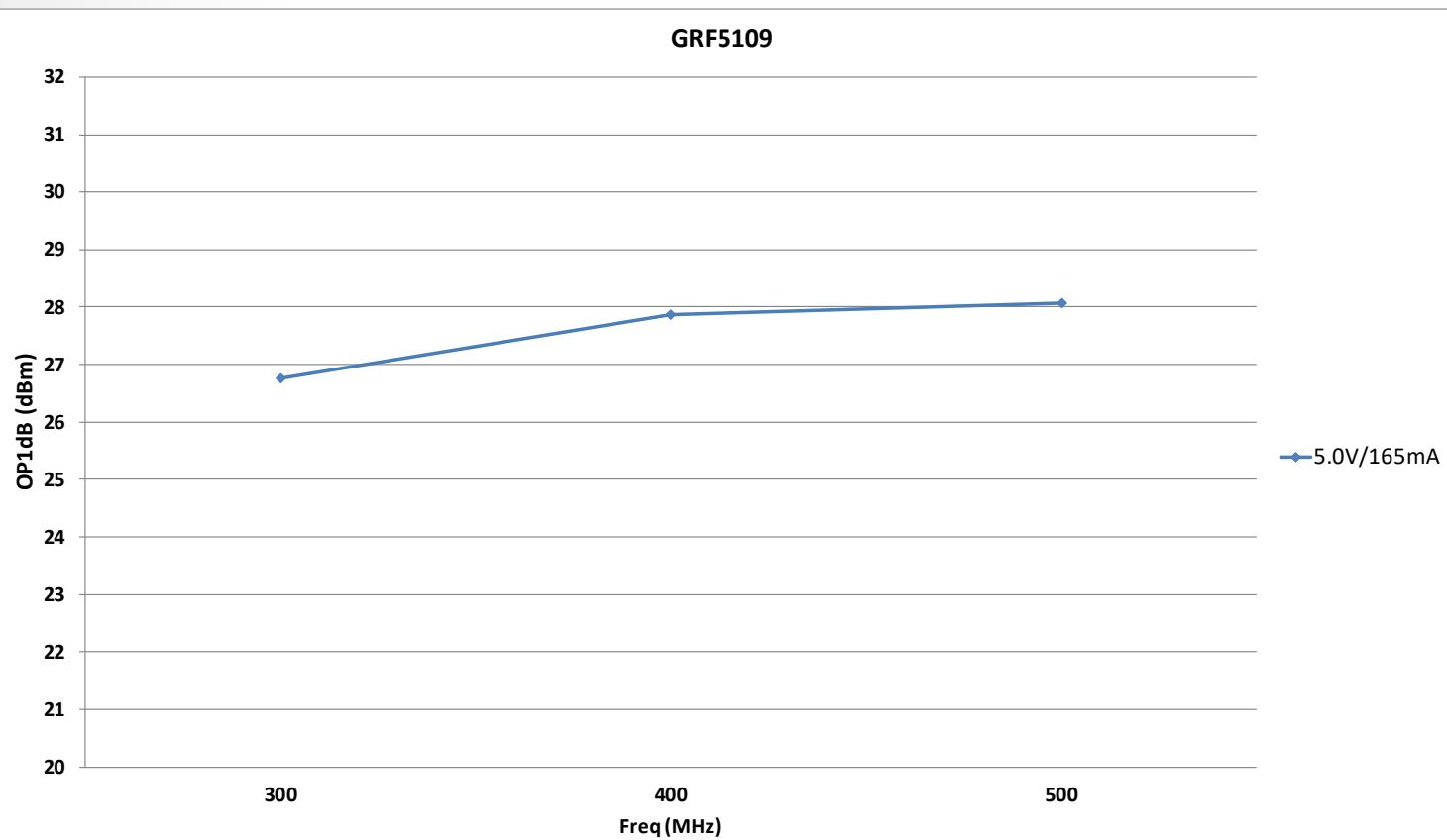




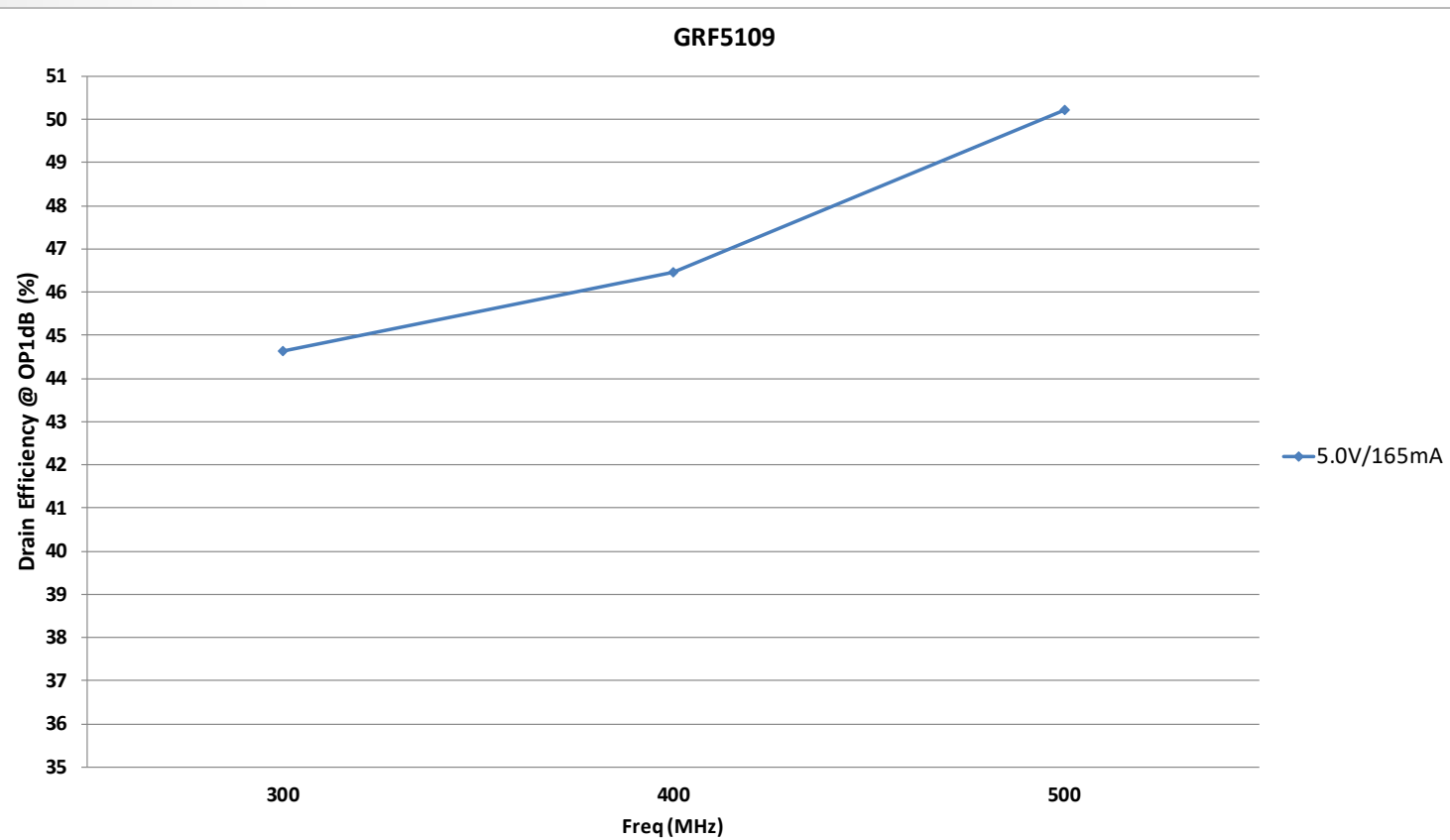
# GRF5109 IP1dB:



# GRF5109 OP1dB:



# GRF5109 Drain Efficiency @ OP1dB:





## **Jeff Broxson**

*Vice President - Sales*

Phone (336) 339-9314

[jbroxson@guerrilla-rf.com](mailto:jbroxson@guerrilla-rf.com)

## **Alan Ake**

*Vice President - Applications/Technical Marketing*

Phone (336) 708-4581

[aake@guerrilla-rf.com](mailto:aake@guerrilla-rf.com)

## **Guerrilla RF**

1196 Pleasant Ridge Road, Suite 5  
Greensboro, NC 27409

Phone: (336) 510-7840

[www.guerrilla-rf.com](http://www.guerrilla-rf.com)