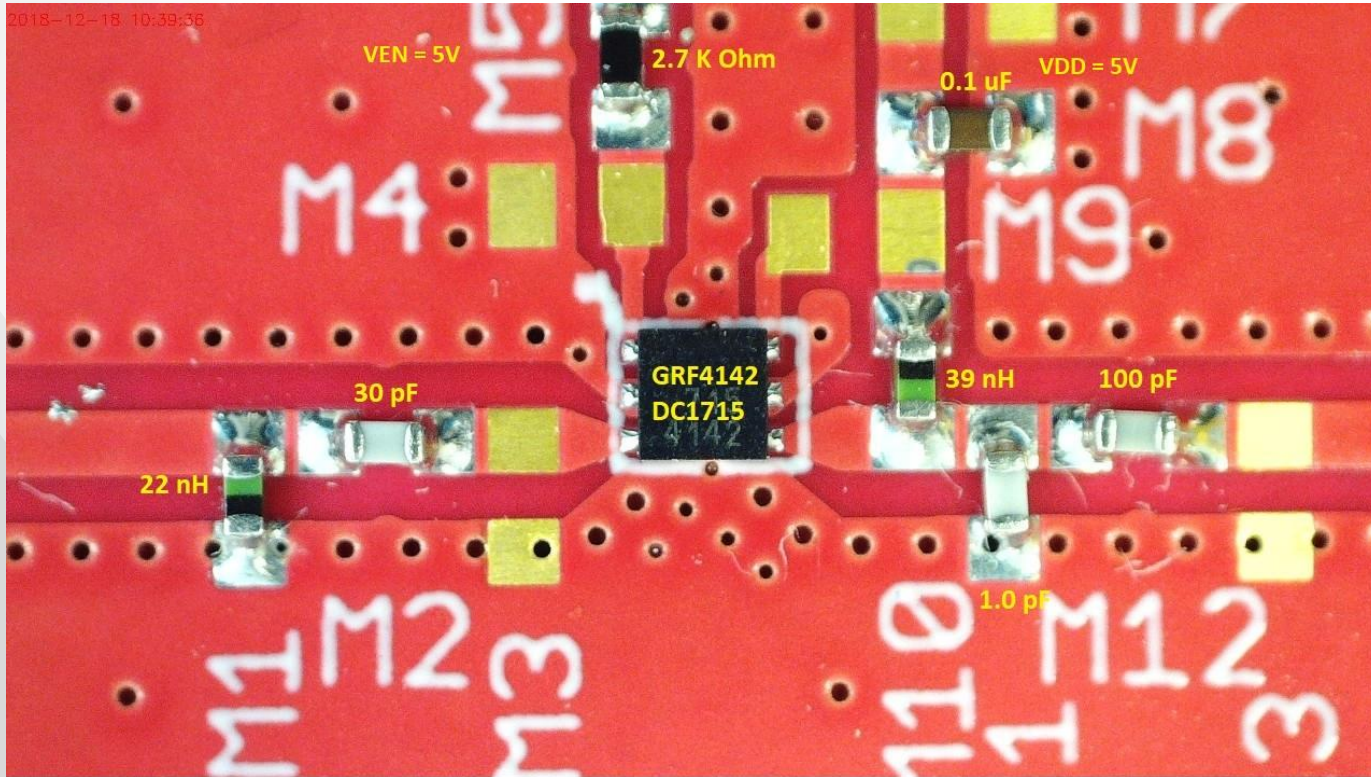


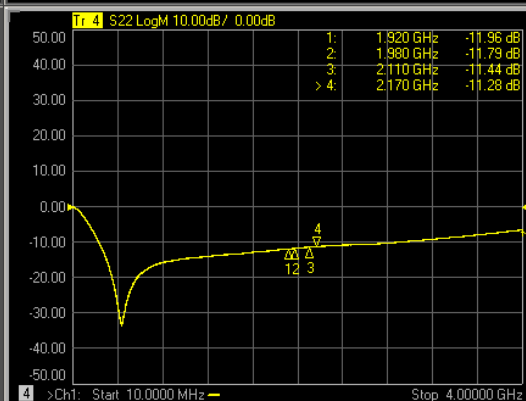
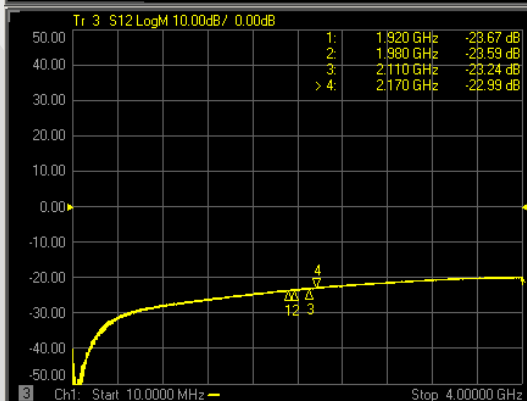
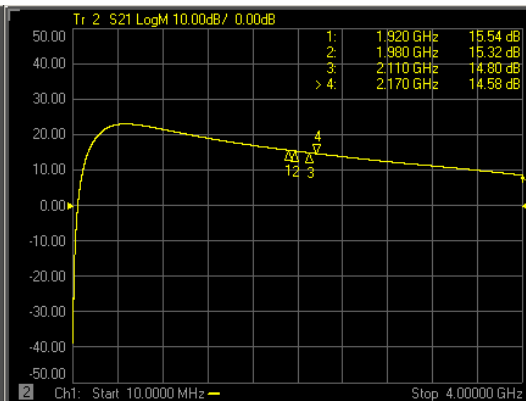
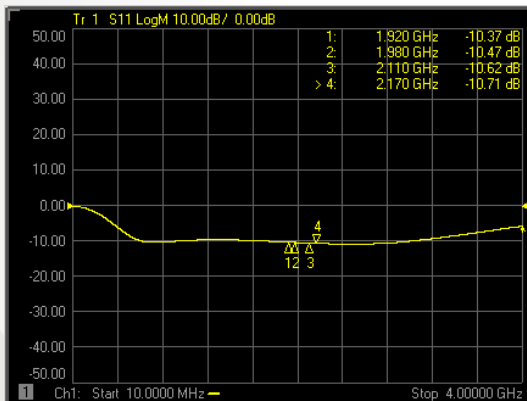


GRF4142 (1920 - 2170 MHz)

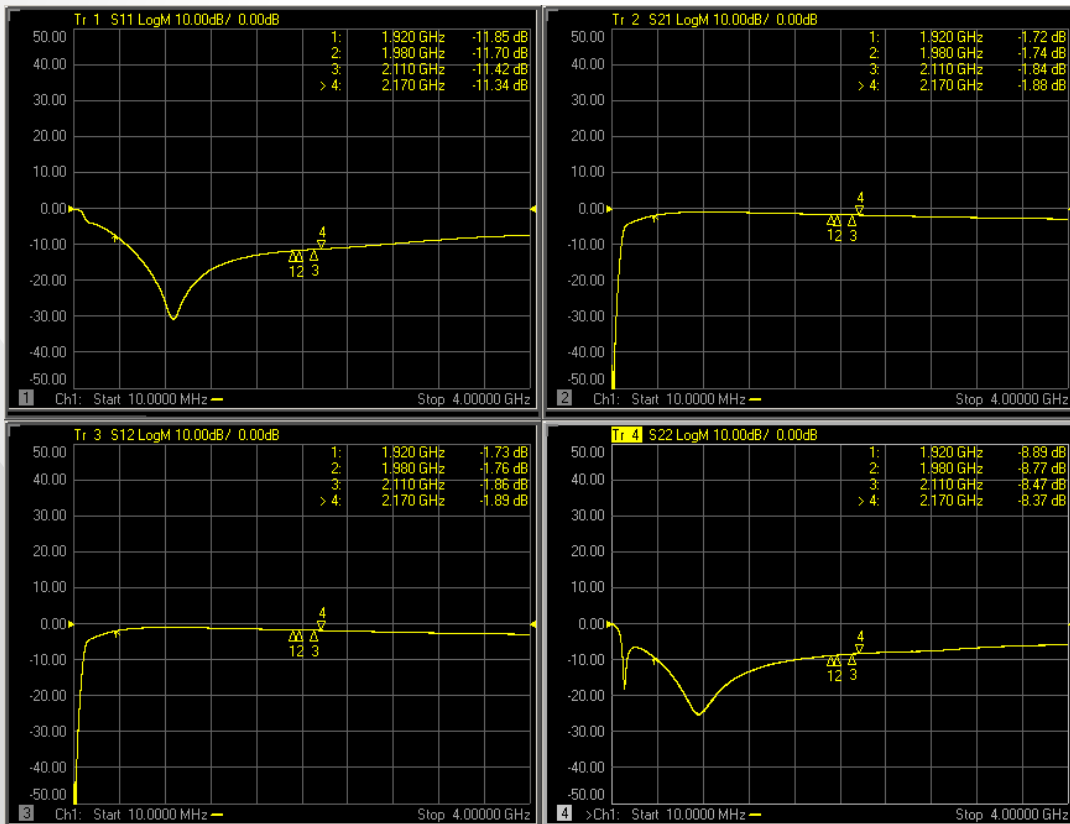
# GRF4142 Schematic:



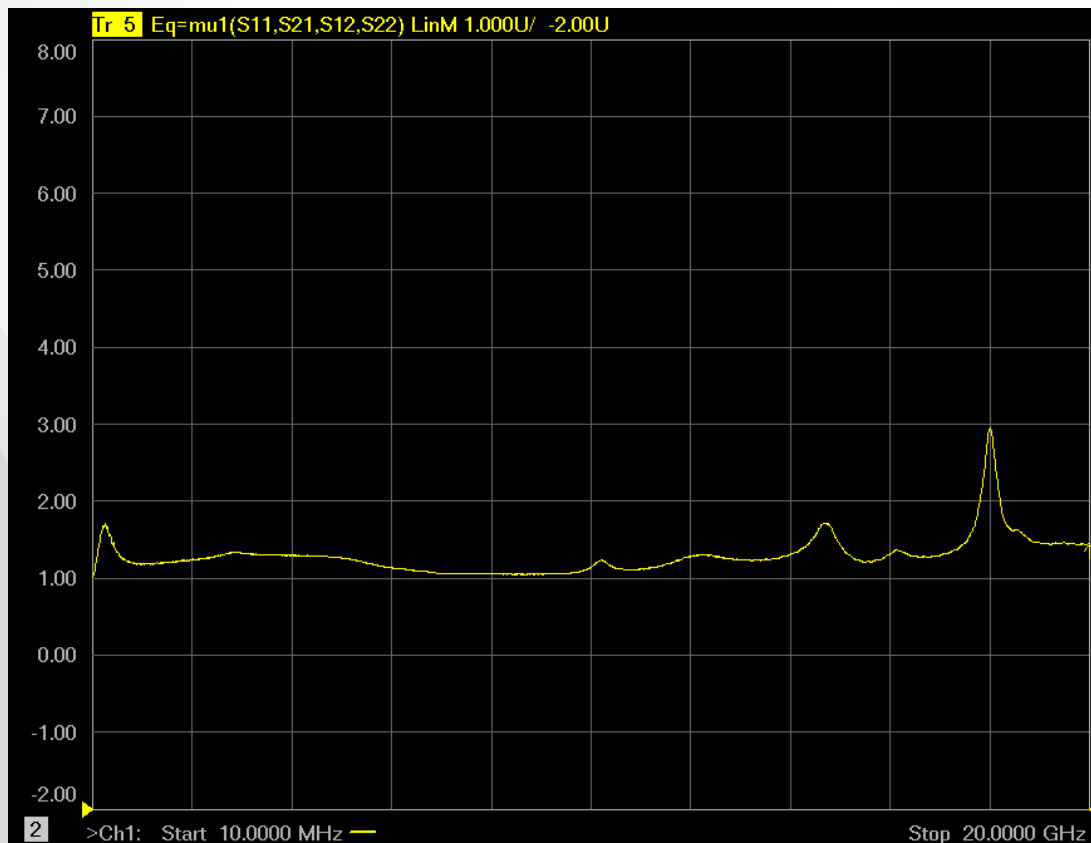
# GRF4142 Gain Mode Response:



# GRF4142 Bypass Mode Response:



# GRF4142 Stability Mu Factor:



# GRF4142 Data:

Descriptor	Freq MHz	Vdd	Iddq mA	Ven	Ien mA	Pout/Ptone dBm	Gain dB	IIP3 dBm	OIP3 dBm	IP1dB dBm	OP1dB dBm	NF
GRF4142#171 Gain Mode	1920	5.0	51.3	5.0	2.0	2.0	15.7	16.1	31.9	4.7	19.4	0.93
GRF4142#171 Gain Mode	1980	5.0	51.3	5.0	2.1	2.0	15.4	16.8	32.2	5.2	19.6	0.93
GRF4142#171 Gain Mode	2110	5.0	51.3	5.0	2.1	2.0	14.7	16.8	31.4	5.4	19.0	0.98
GRF4142#171 Gain Mode	2170	5.0	51.3	5.0	2.1	2.0	14.6	16.7	31.3	5.3	18.9	0.95
Descriptor	Freq MHz	Vdd	Iddq mA	Ven	Ien mA	Pout/Ptone dBm	Gain dB	IIP3 dBm	OIP3 dBm	IP1dB dBm	OP1dB dBm	NF
GRF4142#171 Bypass Mode	1920	5.0	0.8	0.0	0	2.0	-1.5	39.3	37.8	27.0	24.4	x
GRF4142#171 Bypass Mode	1980	5.0	0.8	0.0	0	2.0	-1.7	39.0	37.3	27.1	24.3	x
GRF4142#171 Bypass Mode	2110	5.0	0.8	0.0	0	2.0	-1.9	37.9	36.0	27.2	24.2	x
GRF4142#171 Bypass Mode	2170	5.0	0.8	0.0	0	2.0	-1.8	37.3	35.5	27.0	24.1	x



## **Jeff Broxson**

*Vice President - Sales*

Phone (336) 339-9314

[jbroxson@guerrilla-rf.com](mailto:jbroxson@guerrilla-rf.com)

## **Alan Ake**

*Vice President - Applications/Technical Marketing*

Phone (336) 708-4581

[aake@guerrilla-rf.com](mailto:aake@guerrilla-rf.com)

## **Guerrilla RF**

1196 Pleasant Ridge Road, Suite 5  
Greensboro, NC 27409

Phone: (336) 510-7840

[www.guerrilla-rf.com](http://www.guerrilla-rf.com)