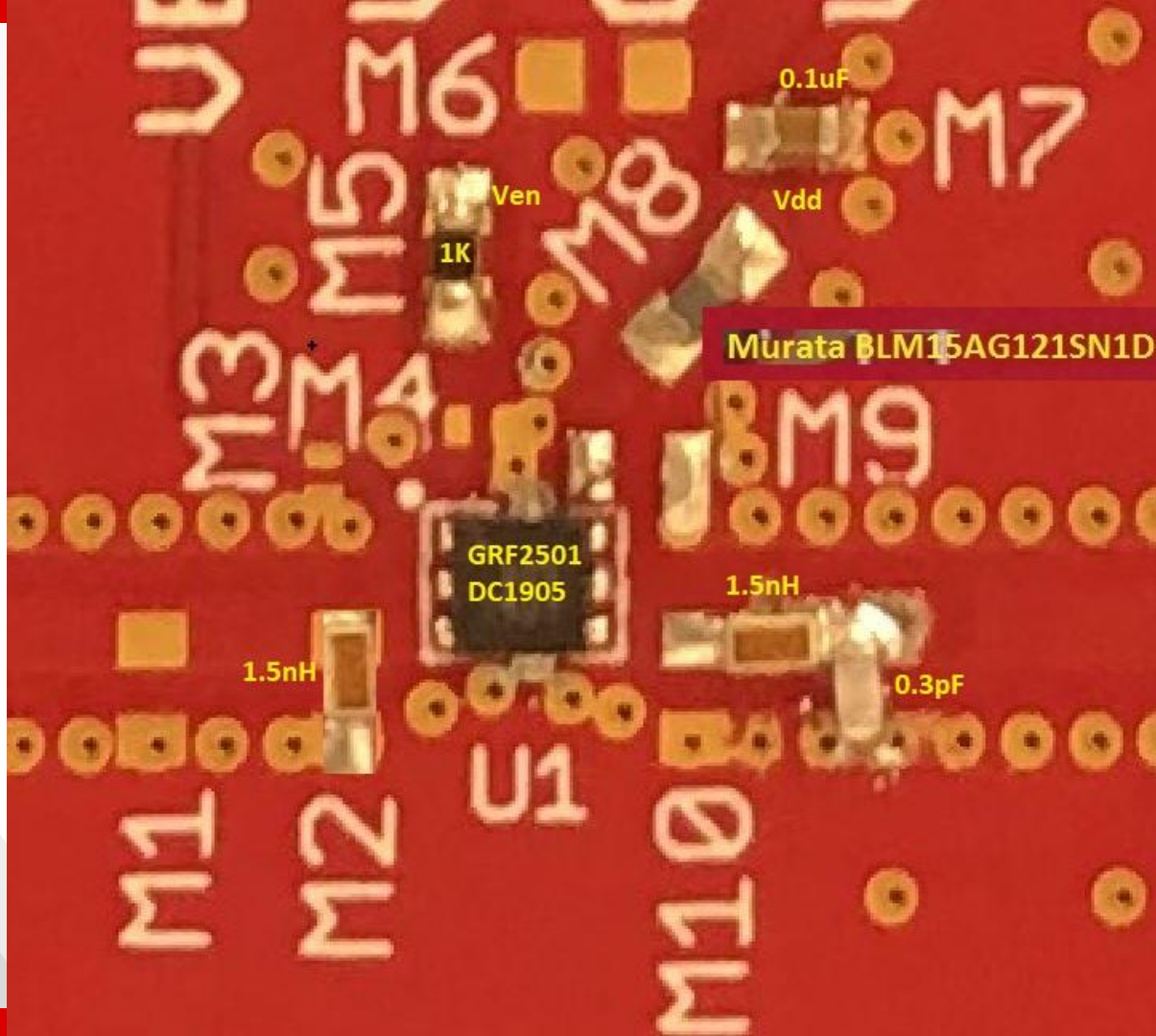


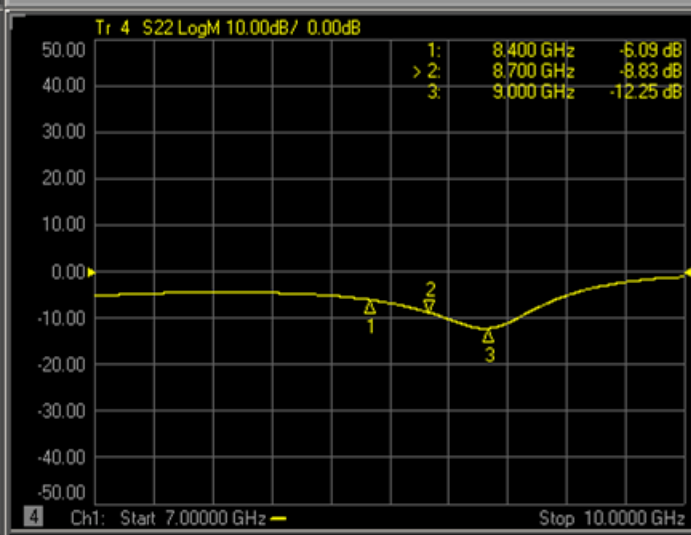
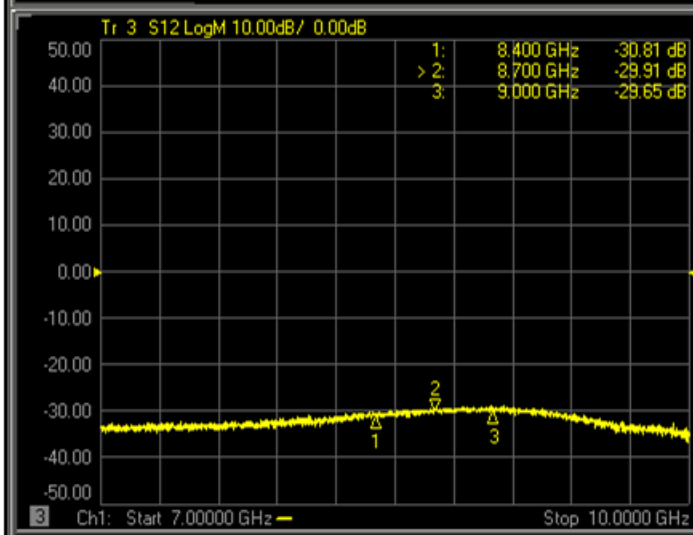
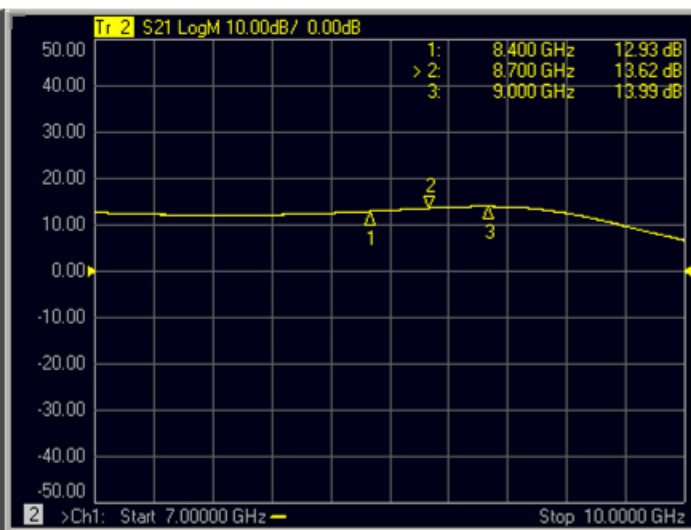
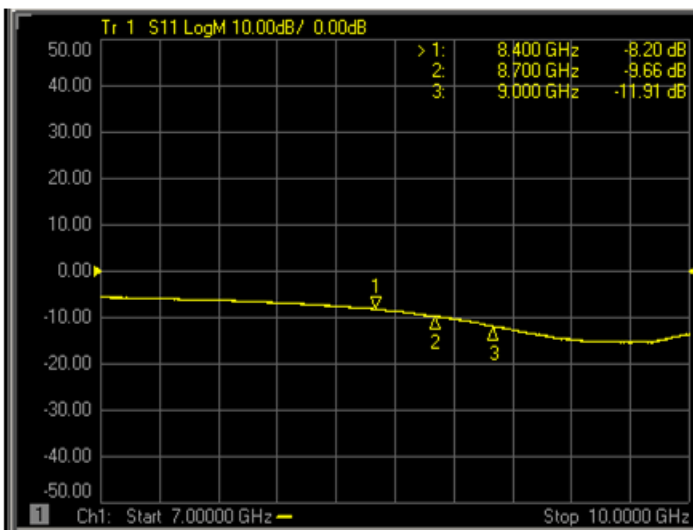


GRF2501 8400-9000 MHz

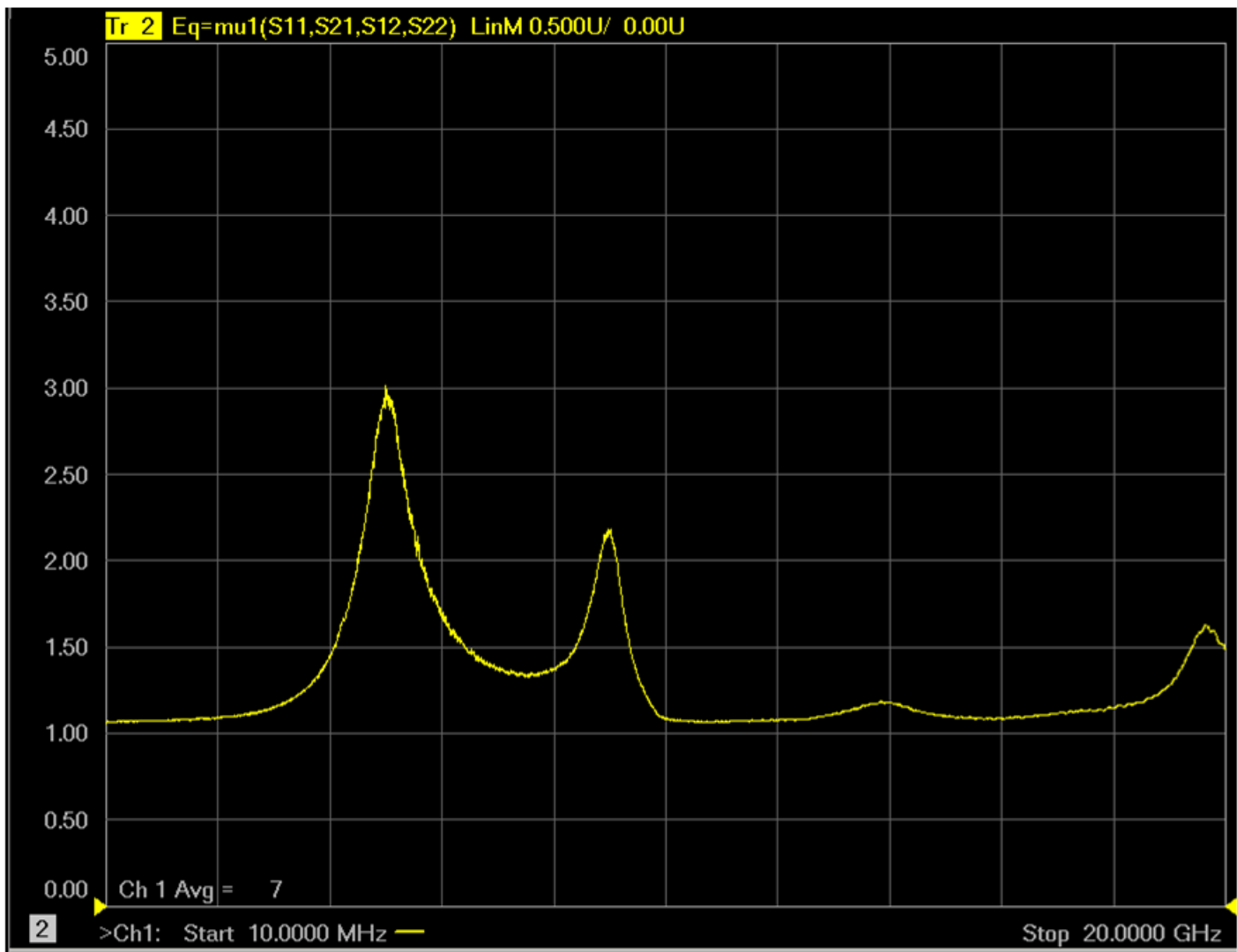
Schematic:



Response:



Stability:



Data:

Bias Point	Freq MHz	Vdd V	Ven V	Iddq mA	Pout/Ptone dBm	Gain dB	IIP3 dBm	OIP3 dBm	IP1dB dBm	OP1dB dBm	EVB NF dB	de-embedded NF dB
3.3V/18mA	8400	3.3	3.3	18	-5	12.9	10.1	23	-0.1	11.8	1.7	1.55
3.3V/18mA	8700	3.3	3.3	18	-5	13.6	8.9	22.5	-1.5	11.1	1.77	1.62
3.3V/18mA	9000	3.3	3.3	18	-5	14	6.3	20.3	-3.8	9.2	1.81	1.66
5.0V/20mA	8400	5	3	20	-5	12.6	13.5	26.1	0.9	12.5	x	x
5.0V/20mA	8700	5	3	20	-5	13.3	11.1	24.4	0.2	12.5	x	x
5.0V/20mA	9000	5	3	20	-5	13.6	9.6	23.2	-1.2	11.4	x	x



Jeff Broxson

Vice President - Sales

Phone (336) 339-9314

jbroxson@guerrilla-rf.com

Alan Ake

Vice President - Applications/Technical Marketing

Phone (336) 708-4581

aake@guerrilla-rf.com

Guerrilla RF

1196 Pleasant Ridge Road, Suite 5
Greensboro, NC 27409

Phone: (336) 510-7840

www.guerrilla-rf.com