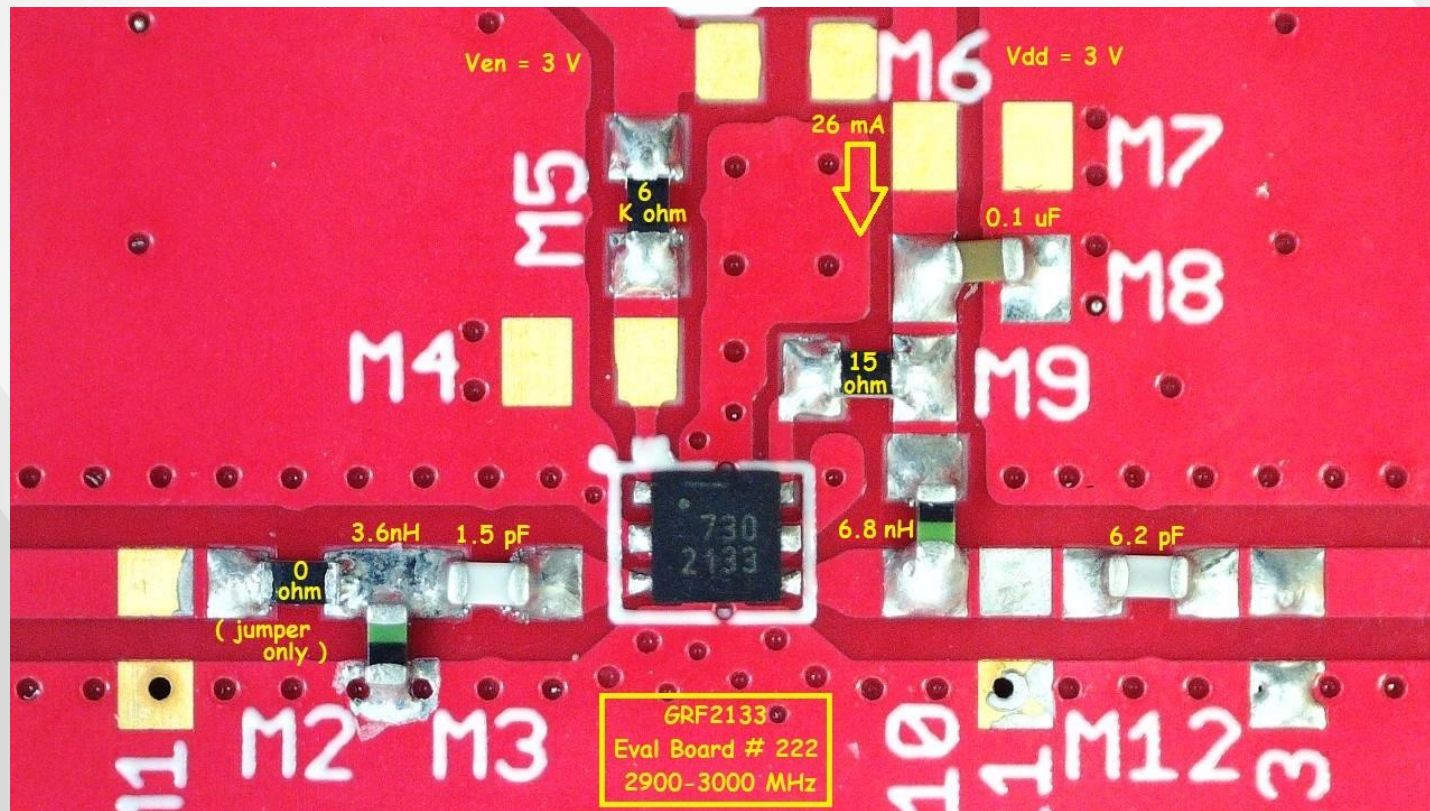




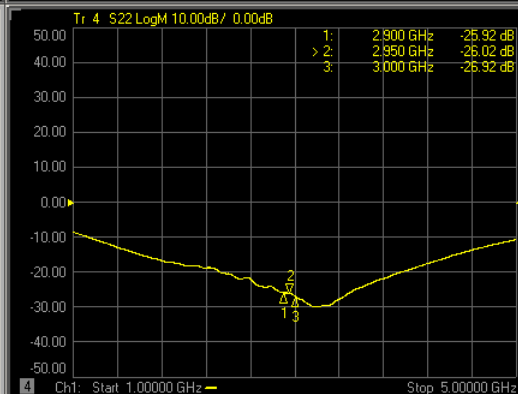
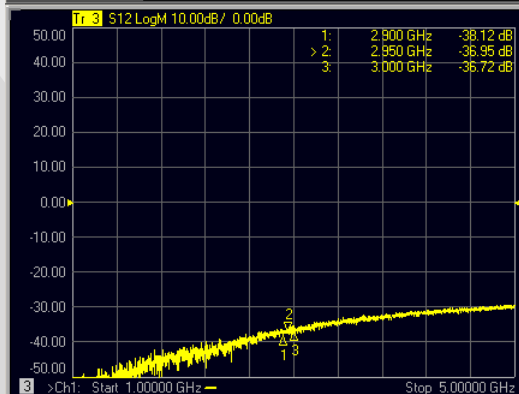
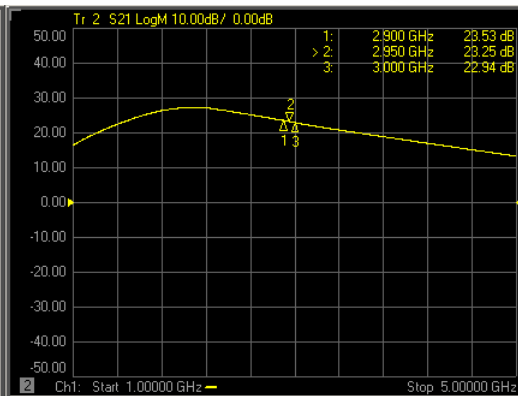
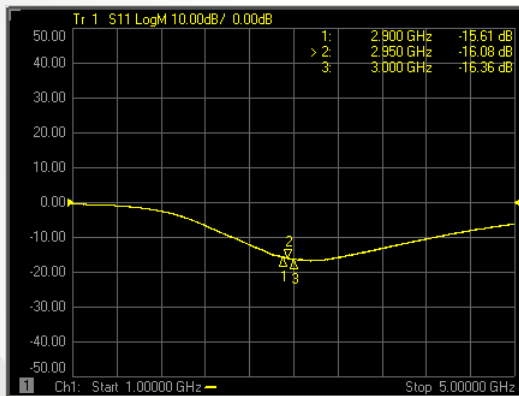
GRF2133 (2900 - 3000 MHz)

Evaluation Board # 222

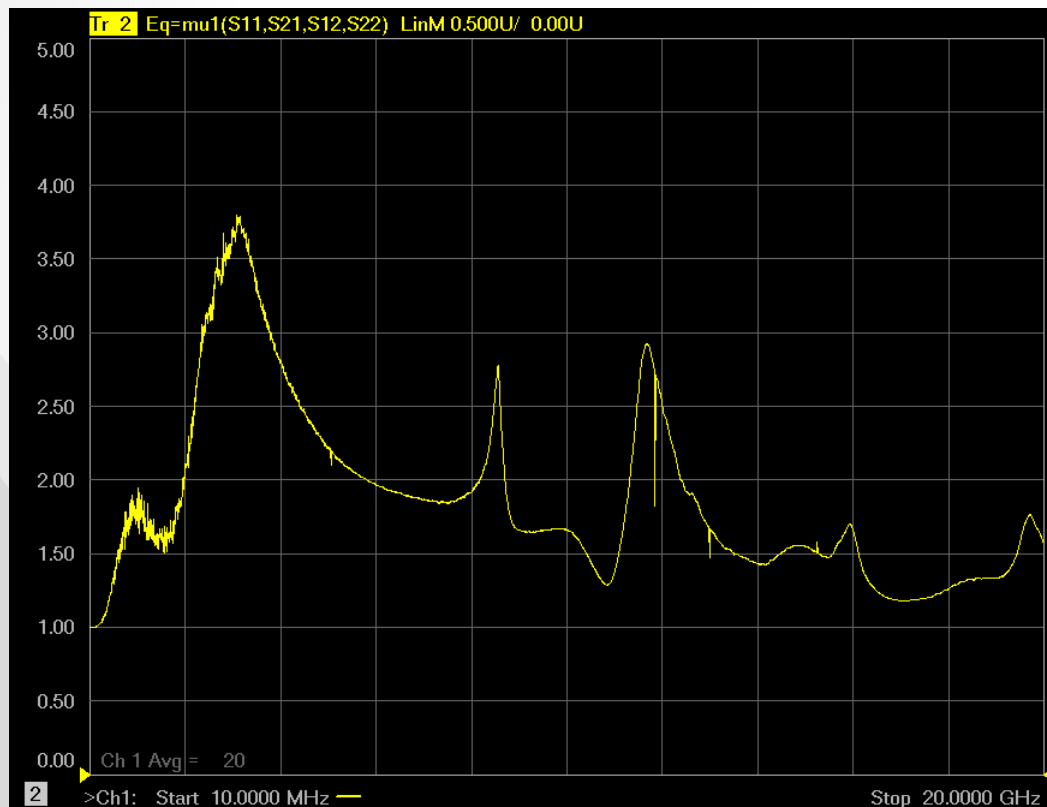
GRF2133 Schematic:



GRF2133 Response:



GRF2133 Stability Mu Factor:



GRF2133 Data:

Descriptor	Freq MHz	Vdd	Iddq mA	Ven	Ien mA	Pout/Ptone dBm	Gain dB	IIP3 dBm	OIP3 dBm	IP1dB dBm	OP1dB dBm	EVB NF
GRF2133_Eval # 222_3V/25mA	2900	3.0	26.7	3.0	0.9	2.0	23.2	0.2	23.4	-5.3	16.9	0.87
GRF2133_Eval # 222_3V/25mA	2950	3.0	26.7	3.0	0.9	2.0	23.1	0.5	23.5	-5.8	16.3	0.84
GRF2133_Eval # 222_3V/25mA	3000	3.0	26.7	3.0	0.9	2.0	22.8	0.7	23.6	-5.7	16.1	0.86



Jeff Broxson

Vice President - Sales

Phone (336) 339-9314

jbroxson@guerrilla-rf.com

Alan Ake

Vice President - Applications/Technical Marketing

Phone (336) 708-4581

aake@guerrilla-rf.com

Guerrilla RF

1196 Pleasant Ridge Road
Greensboro, NC 27409

Phone: (336) 510-7840

www.guerrilla-rf.com