



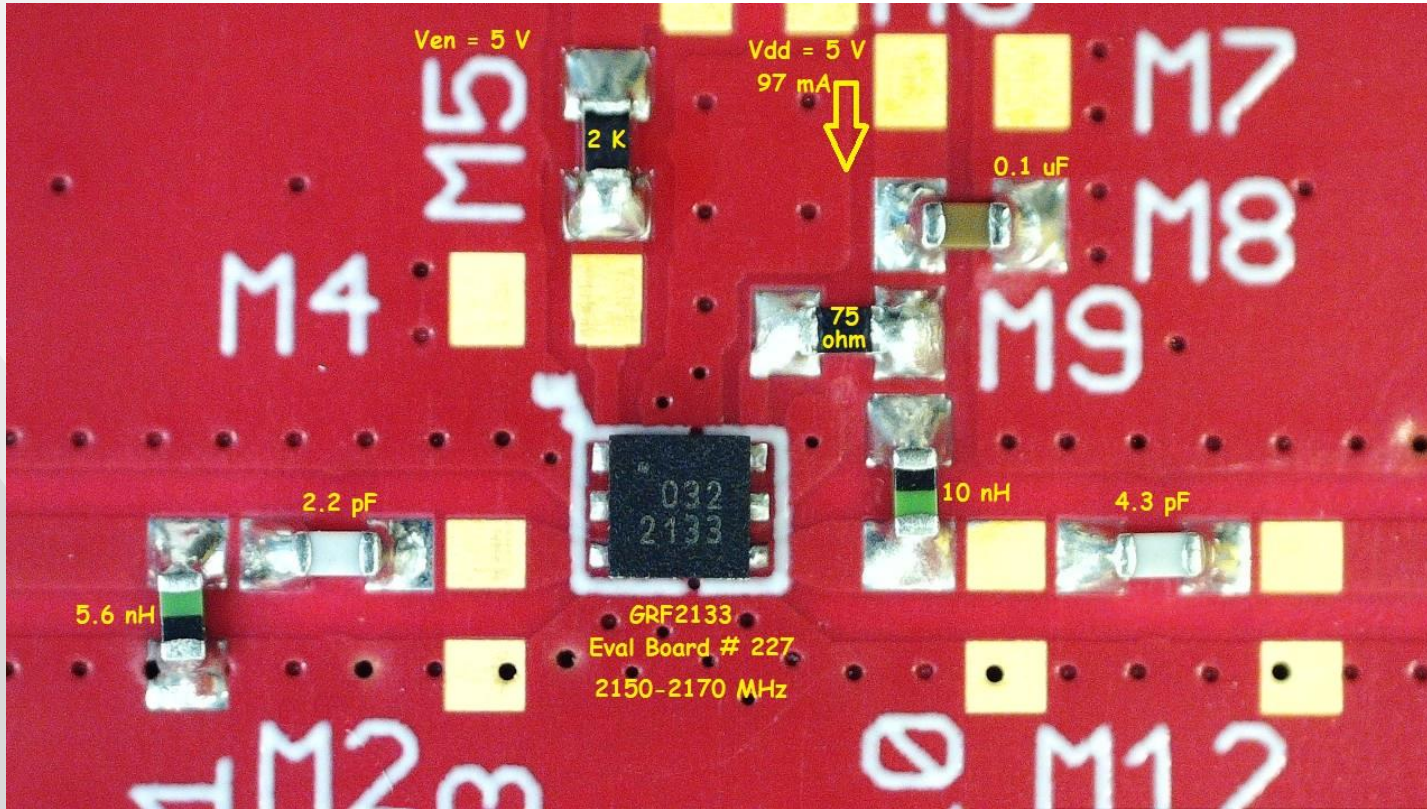
GRF2133 (2150 - 2170 MHz)

5V

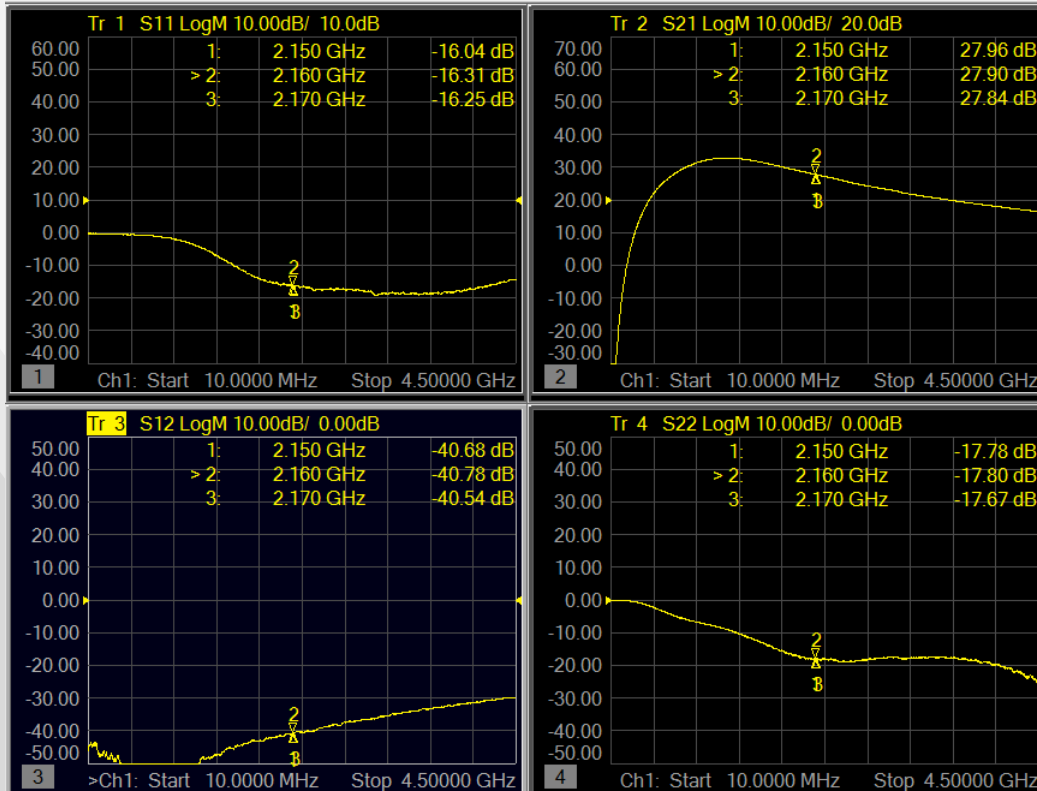
100/80/60mA

Evaluation Board # 227

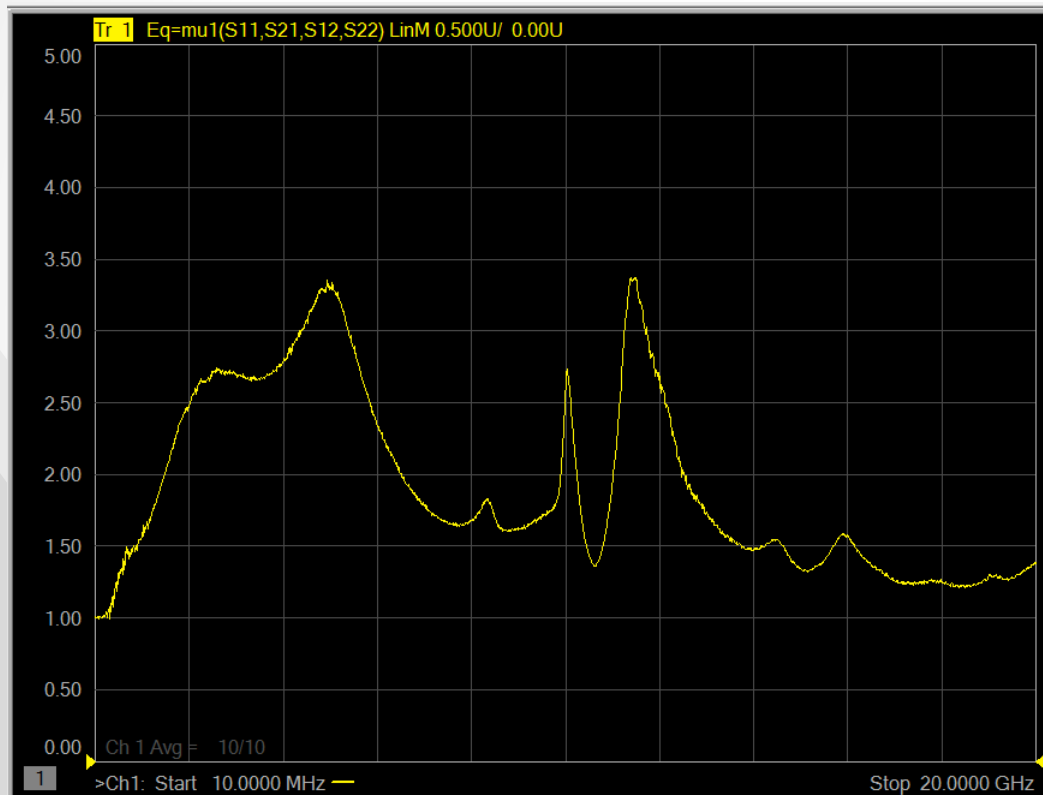
# GRF2133 Schematic:



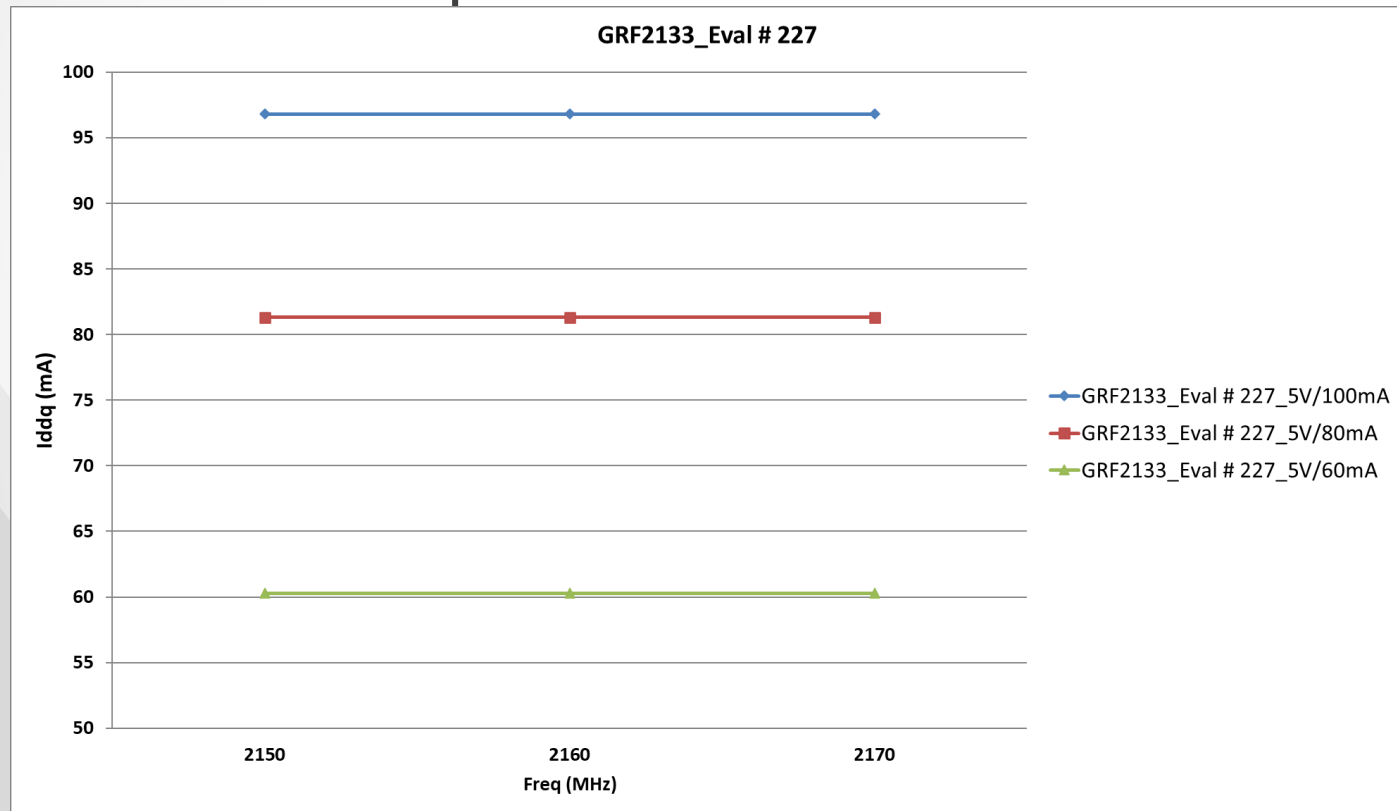
# GRF2133 Response:



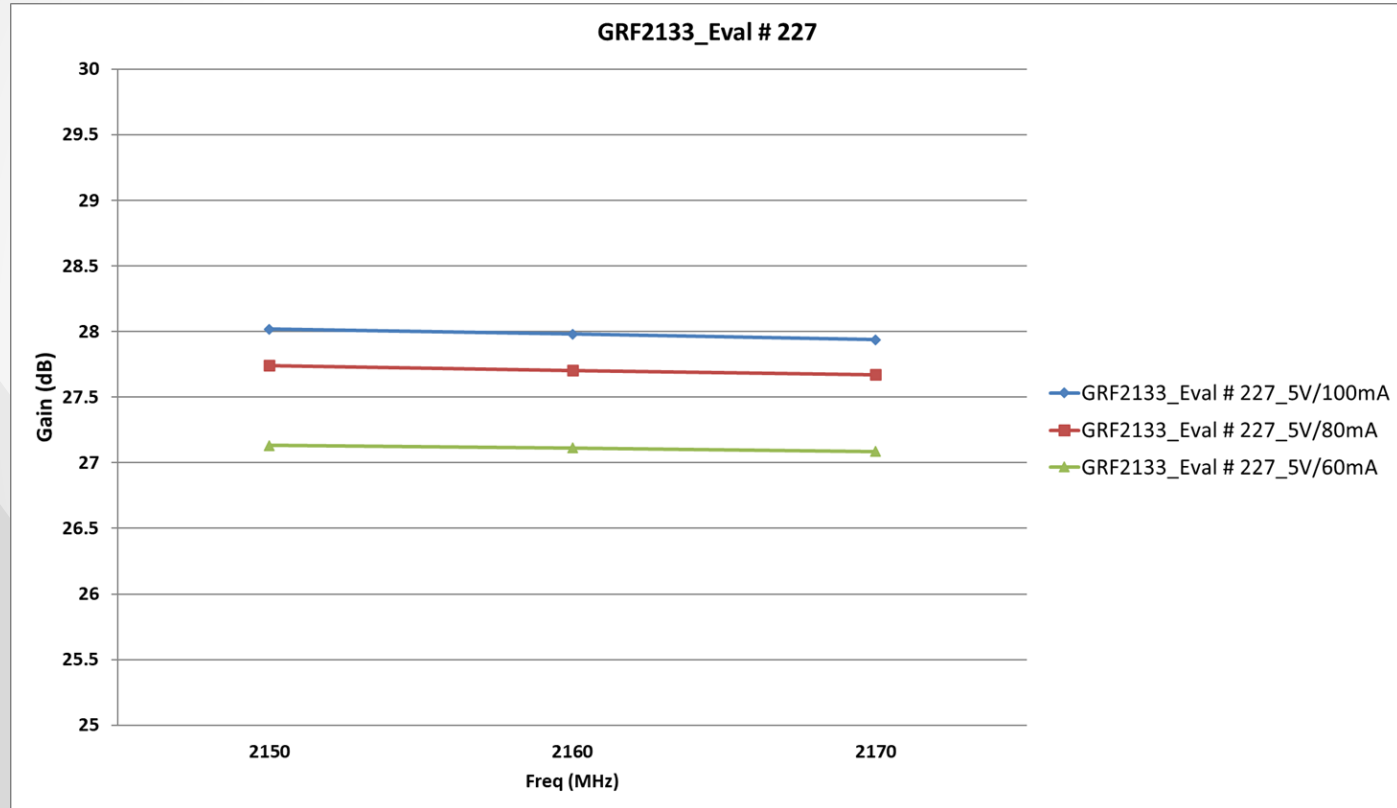
# GRF2133 Stability Mu Factor:



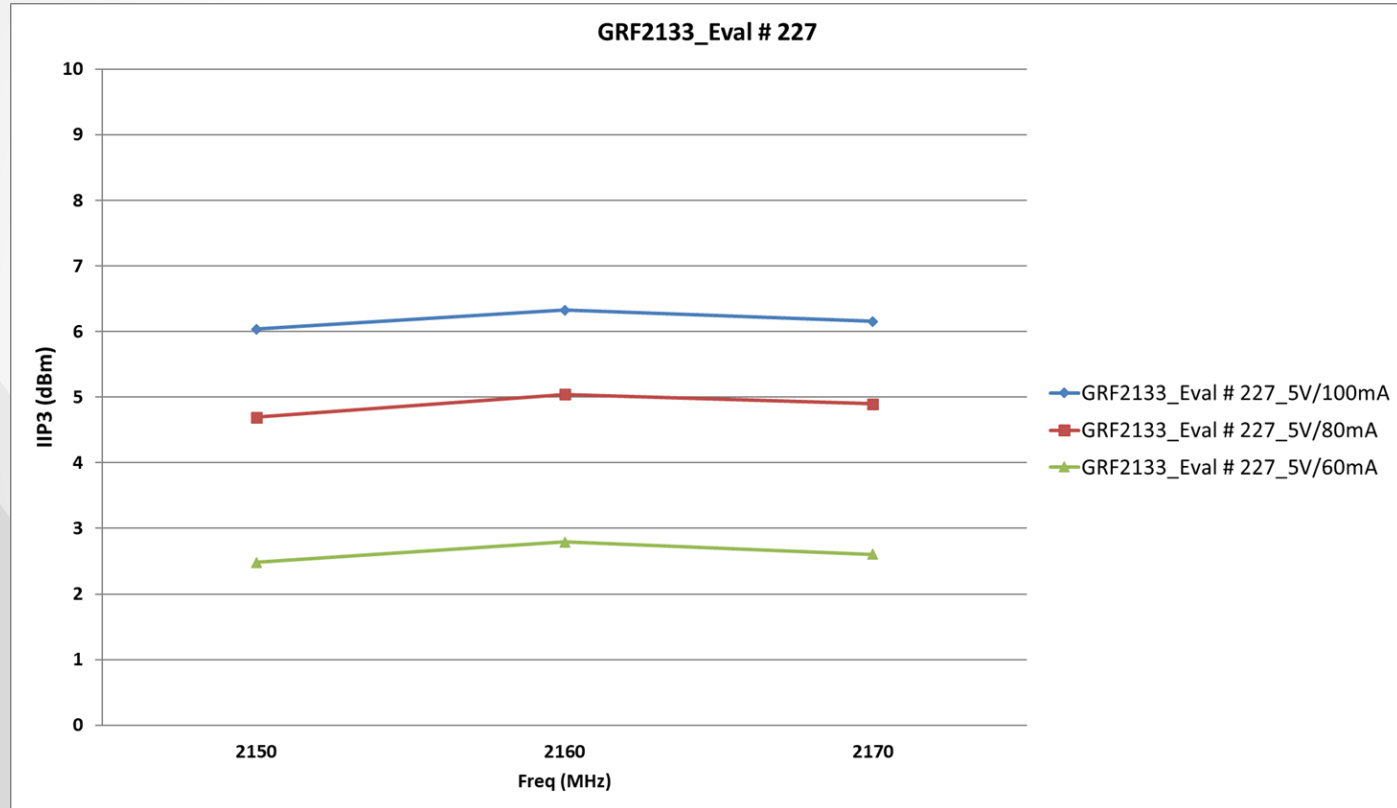
# GRF2133 : Iddq



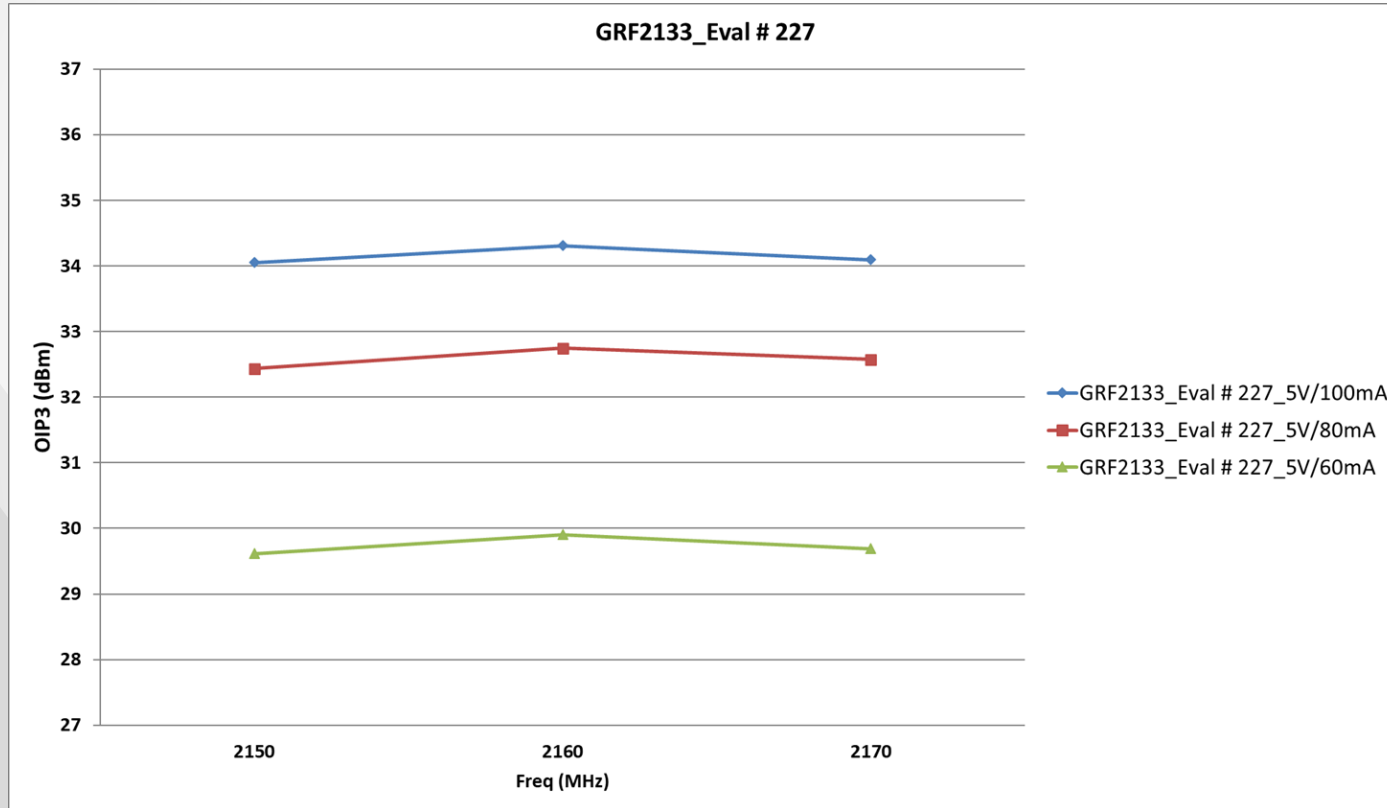
# GRF2133 : Gain



# GRF2133 : IIP3

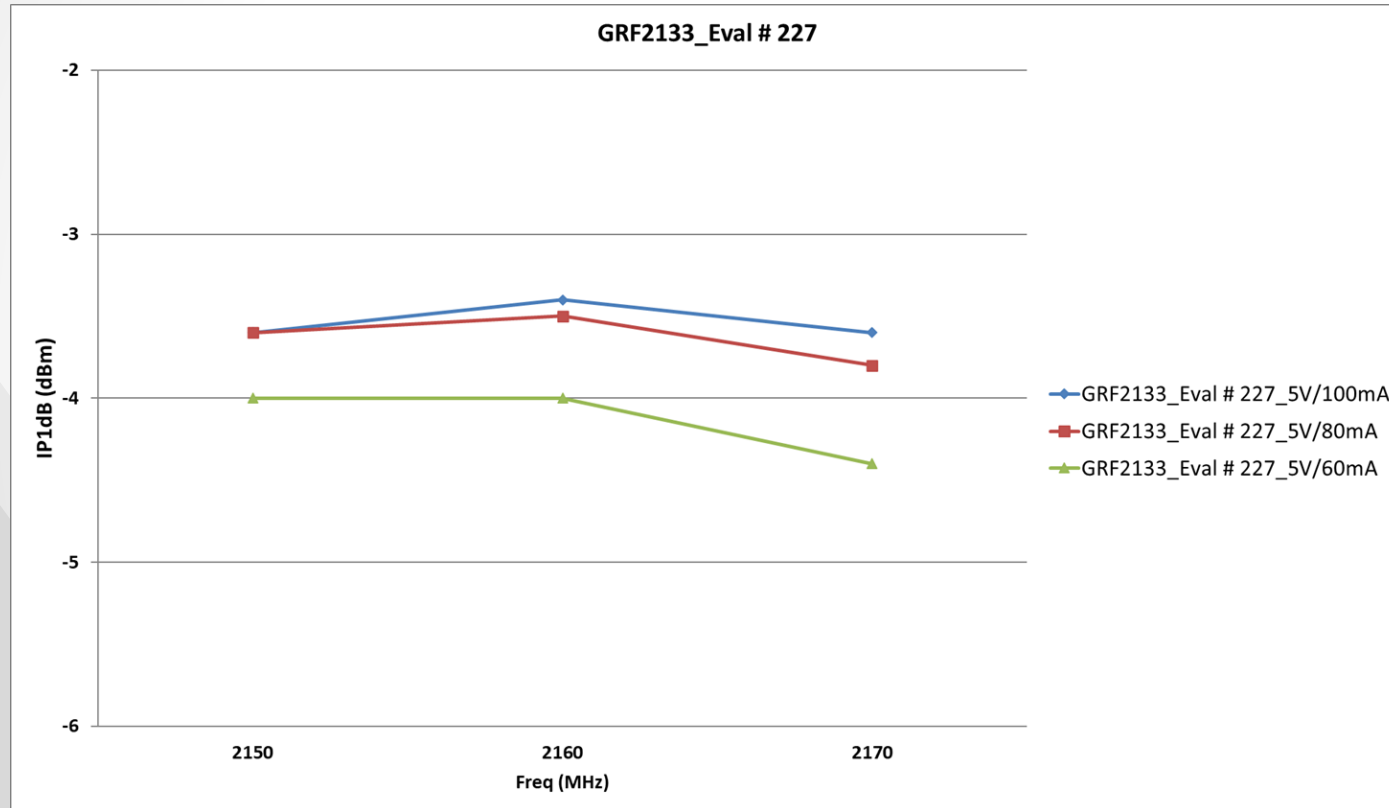


# GRF2133 : OIP3

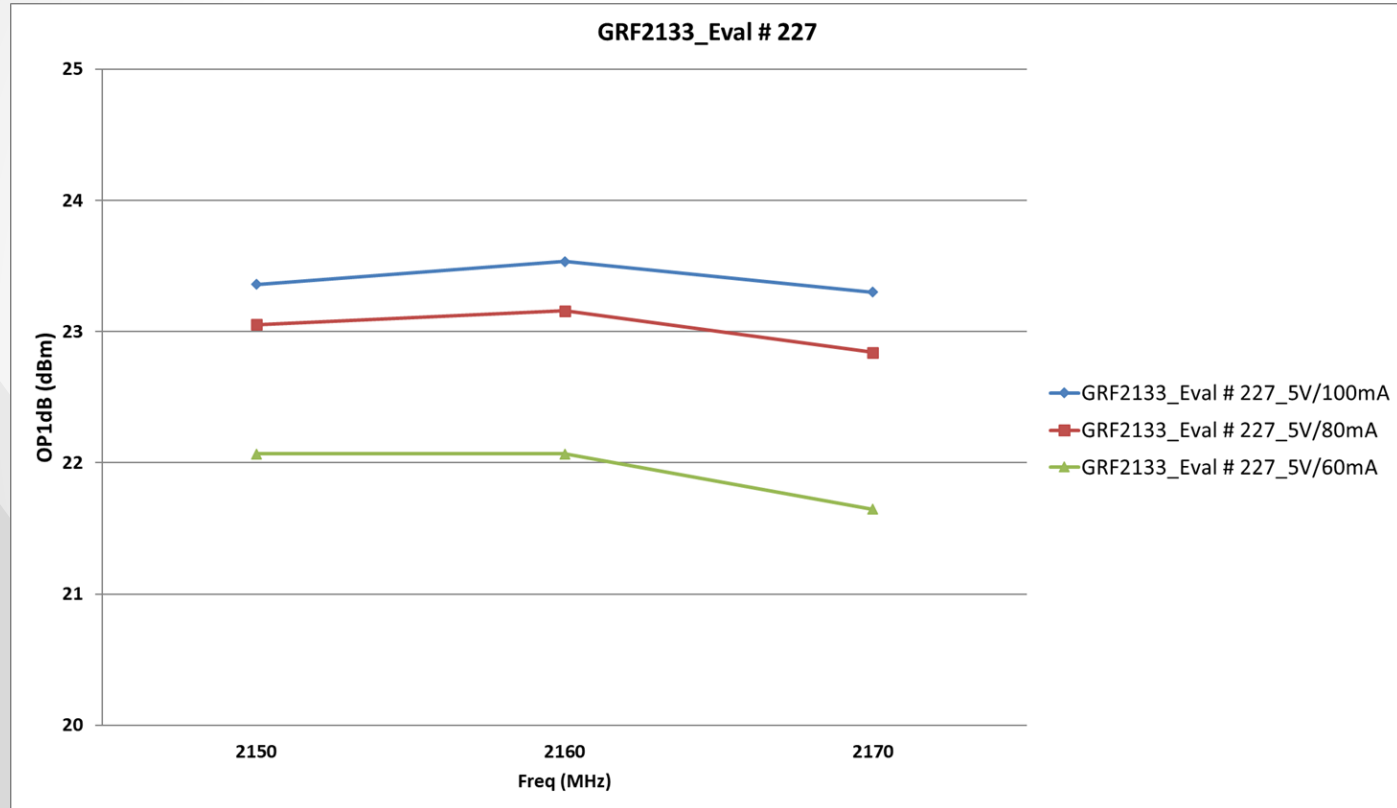




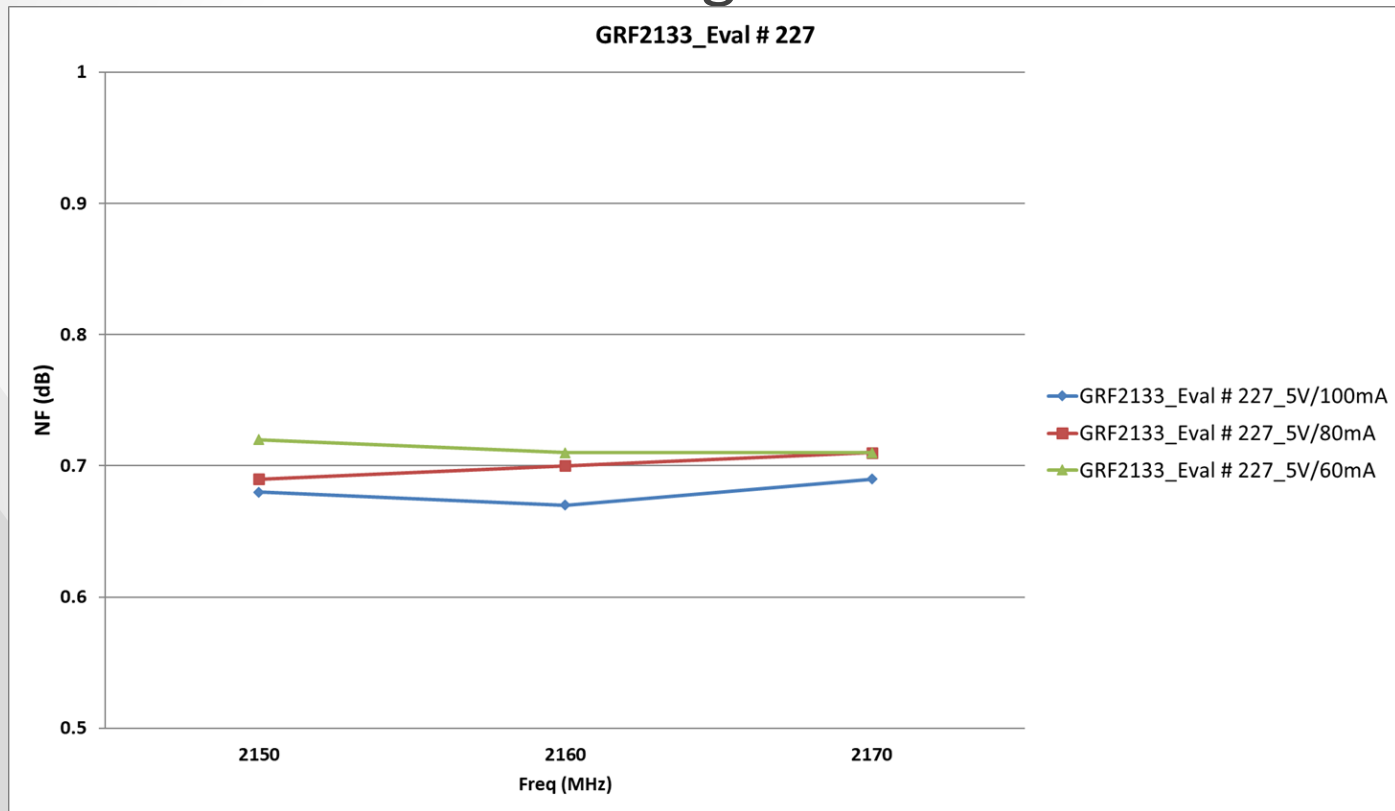
# GRF2133 : IP1dB



# GRF2133 : OP1dB



# GRF2133 : EVB Noise Figure



# GRF2133 Tabular Data:

| Descriptor                  | Freq MHz | Vdd | Iddq mA | Ven | Ien mA | Pout/Ptone dBm | Gain dB | IIP3 dBm | OIP3 dBm | IP1dB dBm | OP1dB dBm | EVB NF |
|-----------------------------|----------|-----|---------|-----|--------|----------------|---------|----------|----------|-----------|-----------|--------|
| GRF2133_Eval # 227_5V/100mA | 2150     | 5.0 | 96.8    | 5.0 | 2.9    | 2.0            | 28.0    | 6.0      | 34.1     | -3.6      | 23.4      | 0.68   |
| GRF2133_Eval # 227_5V/100mA | 2160     | 5.0 | 96.8    | 5.0 | 2.9    | 2.0            | 28.0    | 6.3      | 34.3     | -3.4      | 23.5      | 0.67   |
| GRF2133_Eval # 227_5V/100mA | 2170     | 5.0 | 96.8    | 5.0 | 2.9    | 2.0            | 27.9    | 6.2      | 34.1     | -3.6      | 23.3      | 0.69   |
| Descriptor                  | Freq MHz | Vdd | Iddq mA | Ven | Ien mA | Pout/Ptone dBm | Gain dB | IIP3 dBm | OIP3 dBm | IP1dB dBm | OP1dB dBm | EVB NF |
| GRF2133_Eval # 227_5V/80mA  | 2150     | 5.0 | 81.3    | 3.8 | 2.2    | 2.0            | 27.7    | 4.7      | 32.4     | -3.6      | 23.1      | 0.69   |
| GRF2133_Eval # 227_5V/80mA  | 2160     | 5.0 | 81.3    | 3.8 | 2.2    | 2.0            | 27.7    | 5.0      | 32.7     | -3.5      | 23.2      | 0.7    |
| GRF2133_Eval # 227_5V/80mA  | 2170     | 5.0 | 81.3    | 3.8 | 2.2    | 2.3            | 27.7    | 4.9      | 32.6     | -3.8      | 22.8      | 0.71   |
| Descriptor                  | Freq MHz | Vdd | Iddq mA | Ven | Ien mA | Pout/Ptone dBm | Gain dB | IIP3 dBm | OIP3 dBm | IP1dB dBm | OP1dB dBm | EVB NF |
| GRF2133_Eval # 227_5V/60mA  | 2150     | 5.0 | 60.3    | 2.5 | 1.4    | 2.0            | 27.1    | 2.5      | 29.6     | -4.0      | 22.1      | 0.72   |
| GRF2133_Eval # 227_5V/60mA  | 2160     | 5.0 | 60.3    | 2.5 | 1.4    | 2.3            | 27.1    | 2.8      | 29.9     | -4.0      | 22.1      | 0.71   |
| GRF2133_Eval # 227_5V/60mA  | 2170     | 5.0 | 60.3    | 2.5 | 1.4    | 2.3            | 27.1    | 2.6      | 29.7     | -4.4      | 21.6      | 0.71   |



**Jeff Broxson**

*Vice President - Sales*

Phone (336) 339-9314

[jbroxson@guerrilla-rf.com](mailto:jbroxson@guerrilla-rf.com)

**Alan Ake**

*Vice President - Applications/Technical Marketing*

Phone (336) 708-4581

[aake@guerrilla-rf.com](mailto:aake@guerrilla-rf.com)

**Guerrilla RF**

1196 Pleasant Ridge Road  
Greensboro, NC 27409

Phone: (336) 510-7840

[www.guerrilla-rf.com](http://www.guerrilla-rf.com)