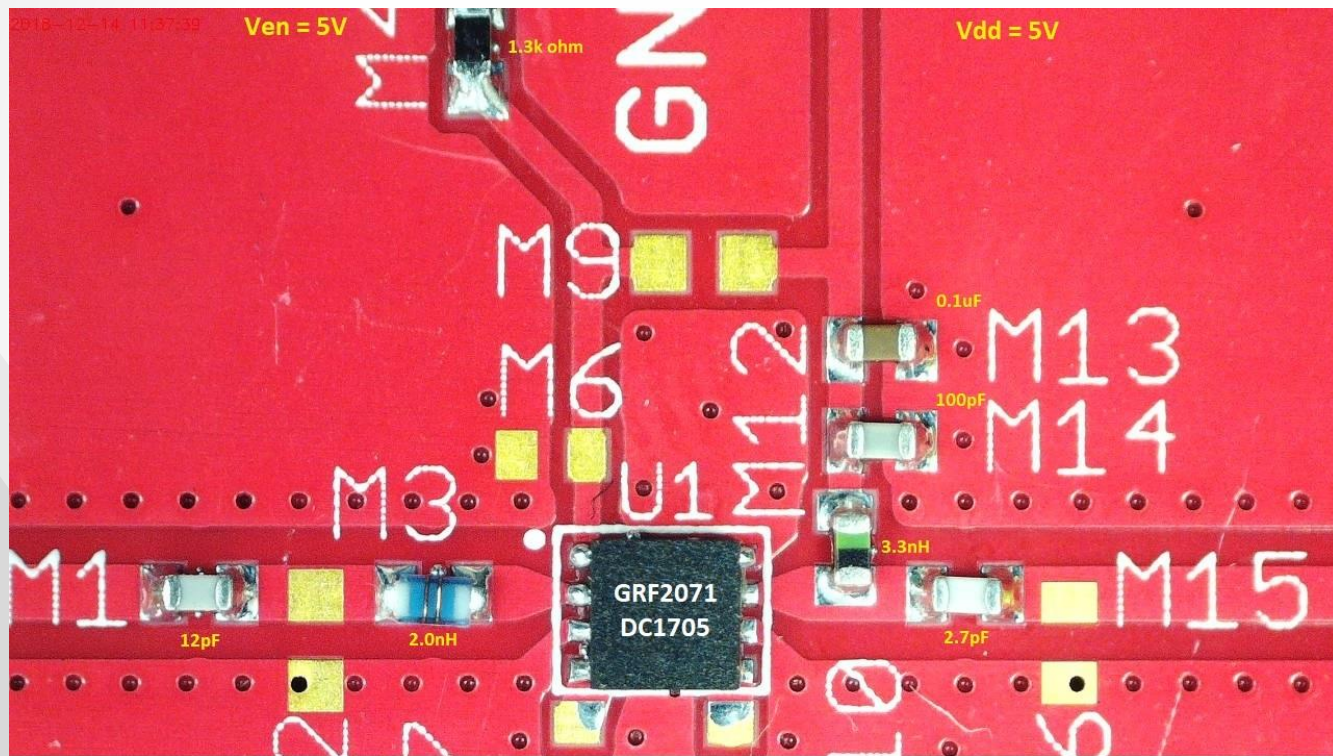


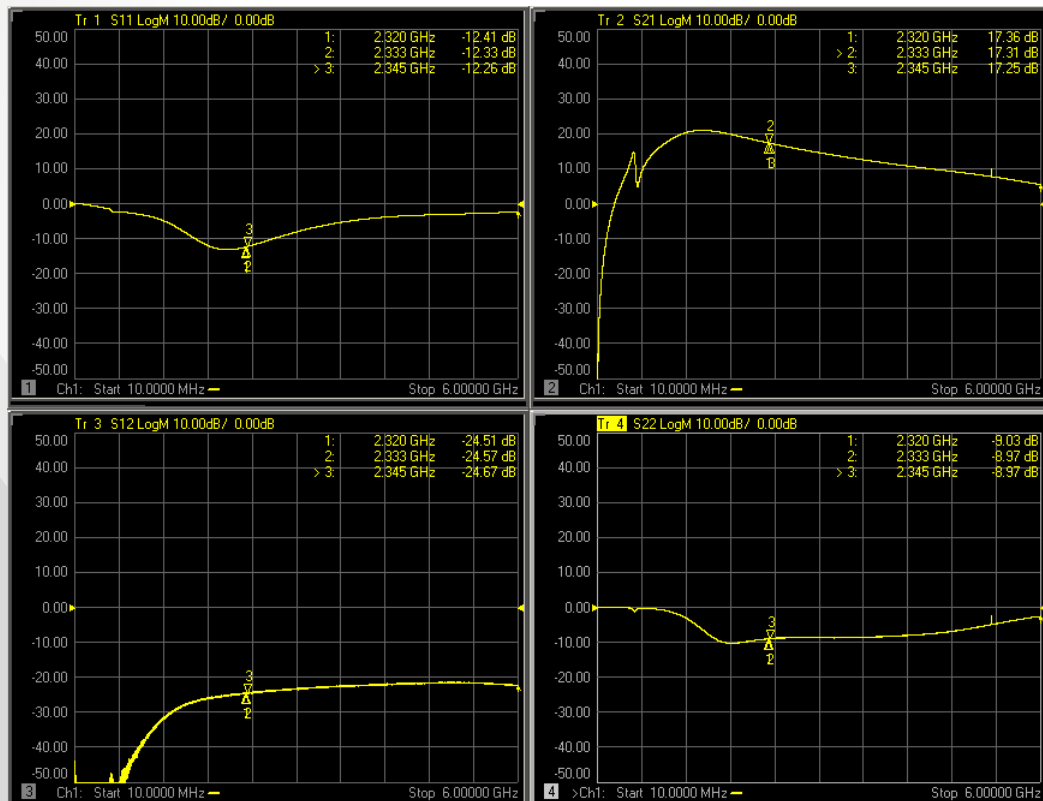


GRF2071 (2320 - 2345 MHz)

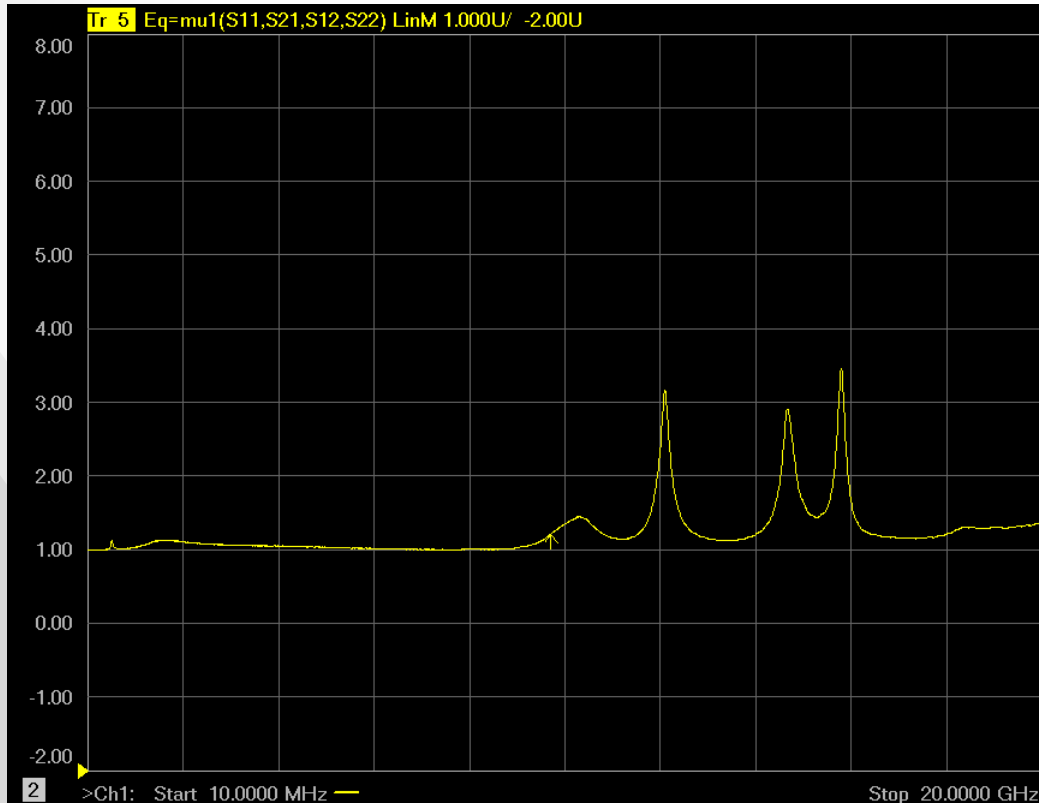
GRF2071 Schematic:



GRF2071 Response:



GRF2071 Stability Mu Factor:



GRF2071 Data:

Descriptor	Freq MHz	Vdd	Iddq mA	Ven	Ien mA	Pout/Ptone dBm	Gain dB	IIP3 dBm	OIP3 dBm	IP1dB dBm	OP1dB dBm	EVB NF
GRF2071 #210	2320	5.0	55.0	5.0	3.2	2.0	17.3	23.9	41.2	4.4	20.7	0.48
GRF2071 #210	2332.5	5.0	55.0	5.0	3.2	2.0	17.2	23.2	40.4	4.3	20.5	0.48
GRF2071 #210	2345	5.0	55.0	5.0	3.2	2.0	17.2	23.8	40.9	4.6	20.7	0.49



Jeff Broxson

Vice President - Sales

Phone (336) 339-9314

jbroxson@guerrilla-rf.com

Alan Ake

Vice President - Applications/Technical Marketing

Phone (336) 708-4581

aake@guerrilla-rf.com

Guerrilla RF

1196 Pleasant Ridge Road, Suite 5
Greensboro, NC 27409

Phone: (336) 510-7840

www.guerrilla-rf.com