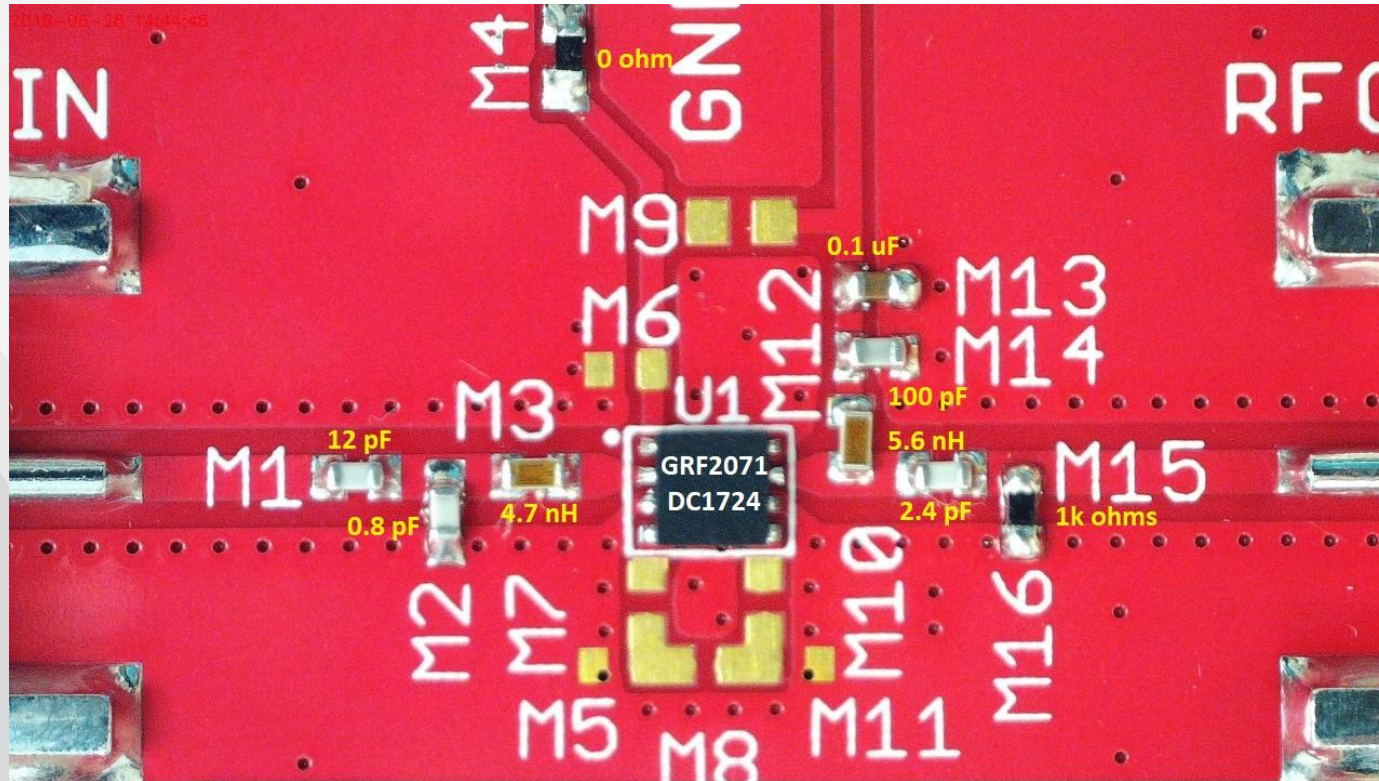


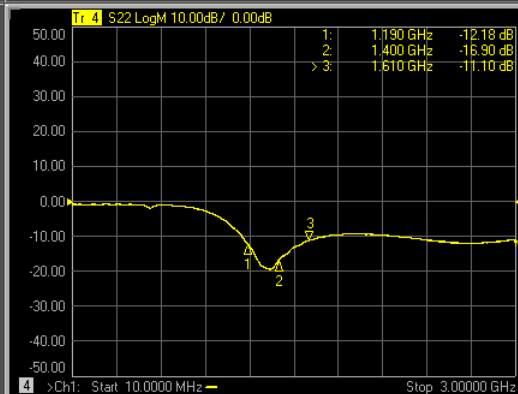
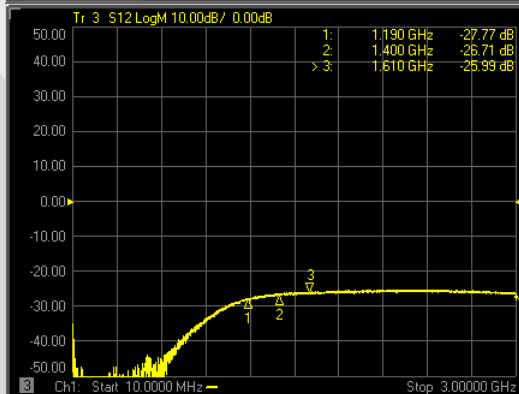
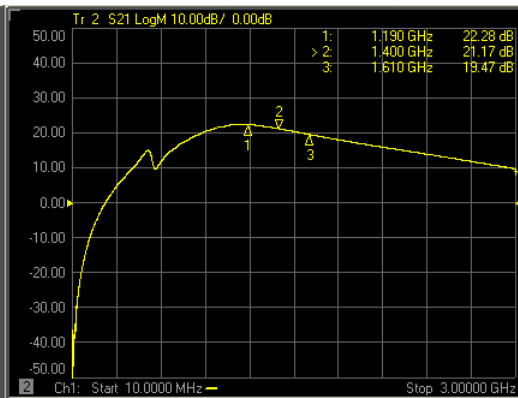
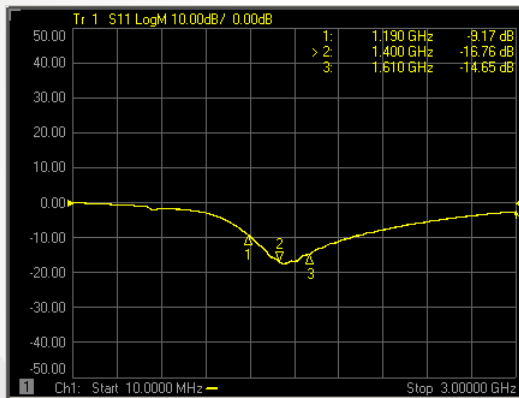


GRF2071 (1190 - 1610 MHz)

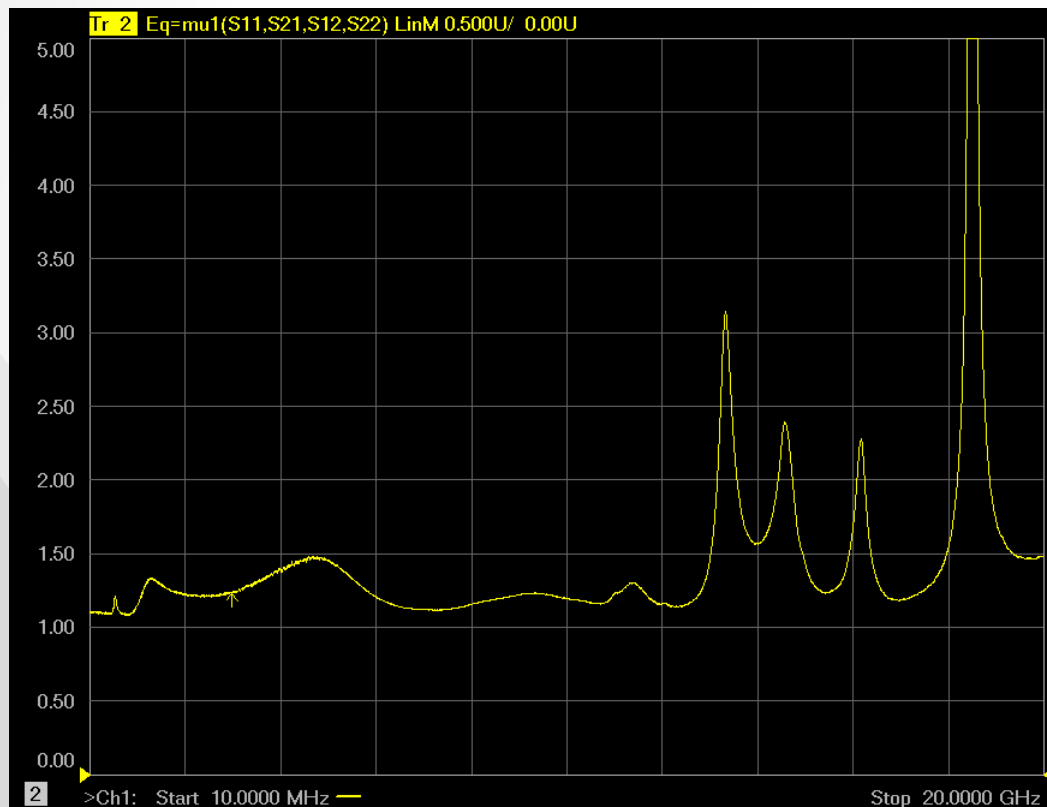
GRF2071 Schematic:



GRF2071 Response:



GRF2071 Stability Mu Factor:



GRF2071 Data:

Descriptor	Freq MHz	Vdd	Iddq mA	Ven	Ien mA	Pout/Ptone dBm	Gain dB	IIP3 dBm	OIP3 dBm	IP1dB dBm	OP1dB dBm	EVN NF
GRF2071 #202	1190	3.8	39.3	3.26	2.1	0	22.4	13.0	35.4	-5.6	15.7	0.44
GRF2071 #202	1400	3.8	39.3	3.26	2.1	0	21.1	15.3	36.4	-3.7	16.4	0.46
GRF2071 #202	1610	3.8	39.3	3.26	2.1	0	19.6	17.8	37.4	-0.9	17.5	0.47



Jeff Broxson

Vice President - Sales

Phone (336) 339-9314

jbroxson@guerrilla-rf.com

Alan Ake

Vice President - Applications/Technical Marketing

Phone (336) 708-4581

aake@guerrilla-rf.com

Guerrilla RF

1196 Pleasant Ridge Road, Suite 5
Greensboro, NC 27409

Phone: (336) 510-7840

www.guerrilla-rf.com