

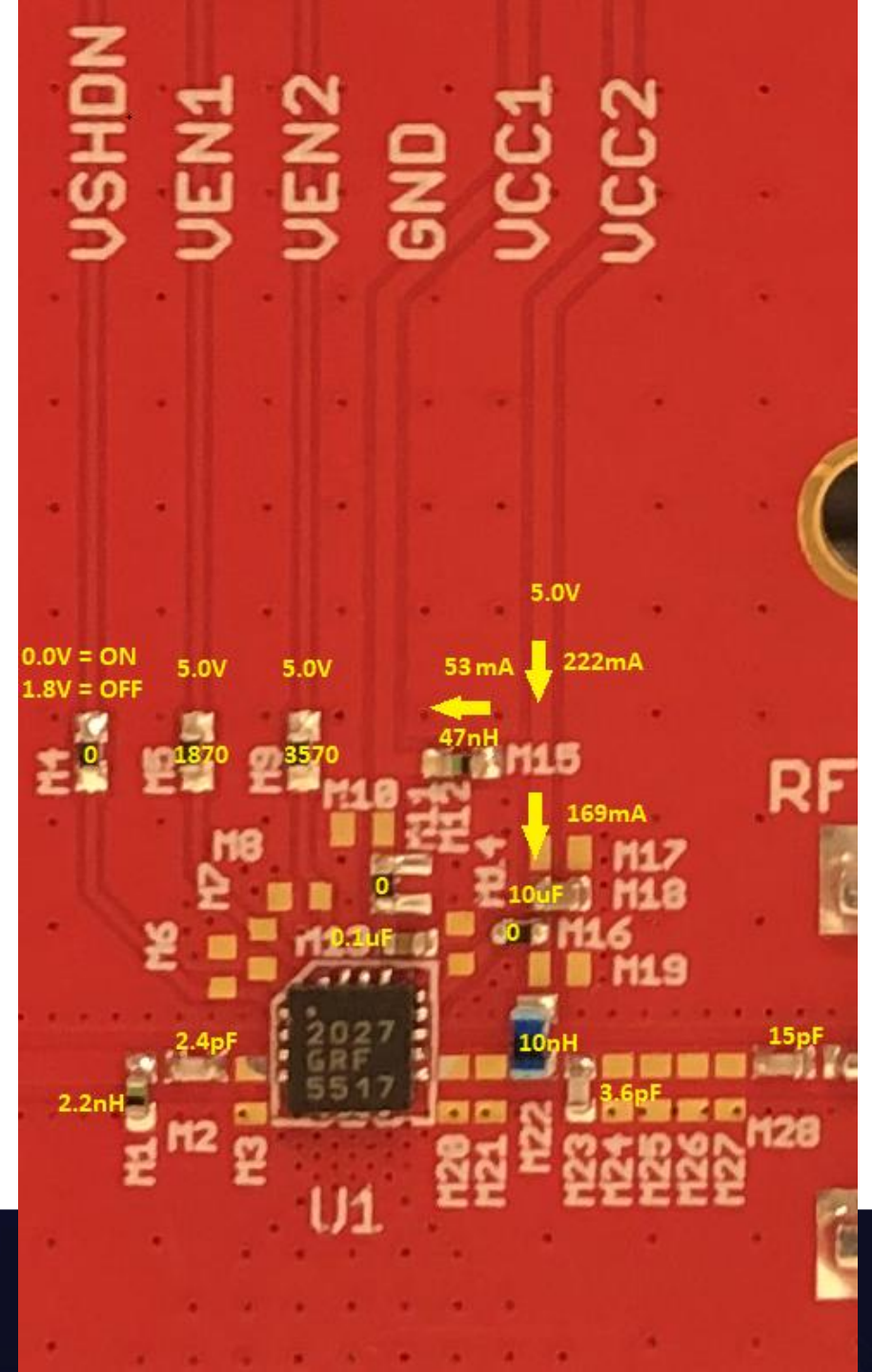


GRF5517 1710-1920 MHz EVB 175

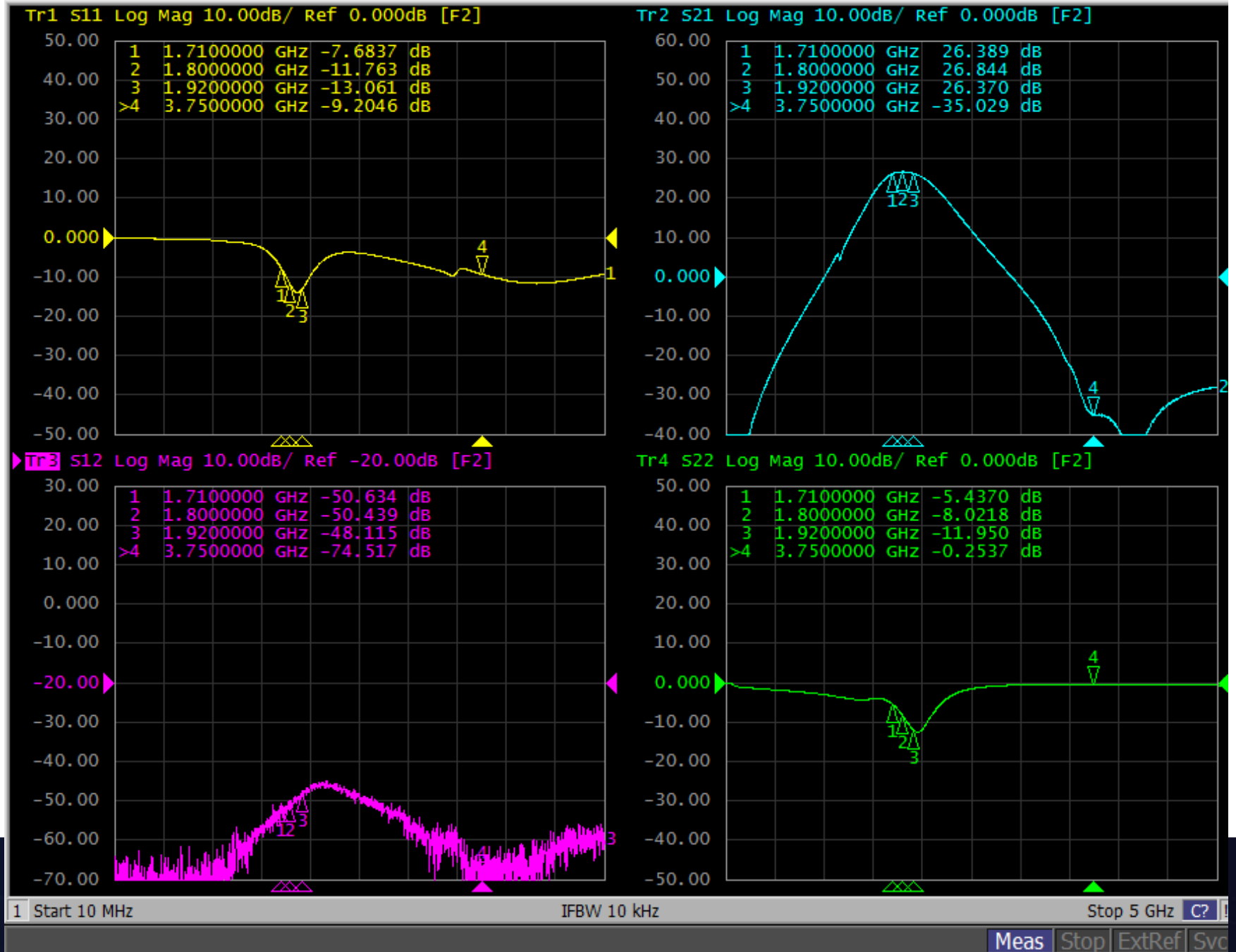
9/8/21

Schematic: GRF5517 configured to accommodate maximum bandwidth with one match → 1710 – 1920 MHz:

E-UTRA Band	Duplex-Mode	f (MHz)	Common name	Included in (subset of) Band	Uplink (UL) BS receive UE transmit (MHz)
2	FDD	1900	PCS blocks A-F	25	1850 – 1910
3	FDD	1800	DCS		1710 – 1785
4	FDD	1700	AWS blocks A-F (AWS-1)	66	1710 – 1755
10	FDD	1700	Extended AWS blocks A-I	66	1710 – 1770
25	FDD	1900	Extended PCS blocks A-G		1850 – 1915
33	TDD	2100	IMT	39	1900 – 1920
35	TDD	1900	PCS (Uplink)		1850 – 1910
39	TDD	1900	DCS-IMT gap		1880 – 1920
66	FDD	1700	Extended AWS blocks A-J (AWS-1/AWS-3)		1710 – 1780



Response:

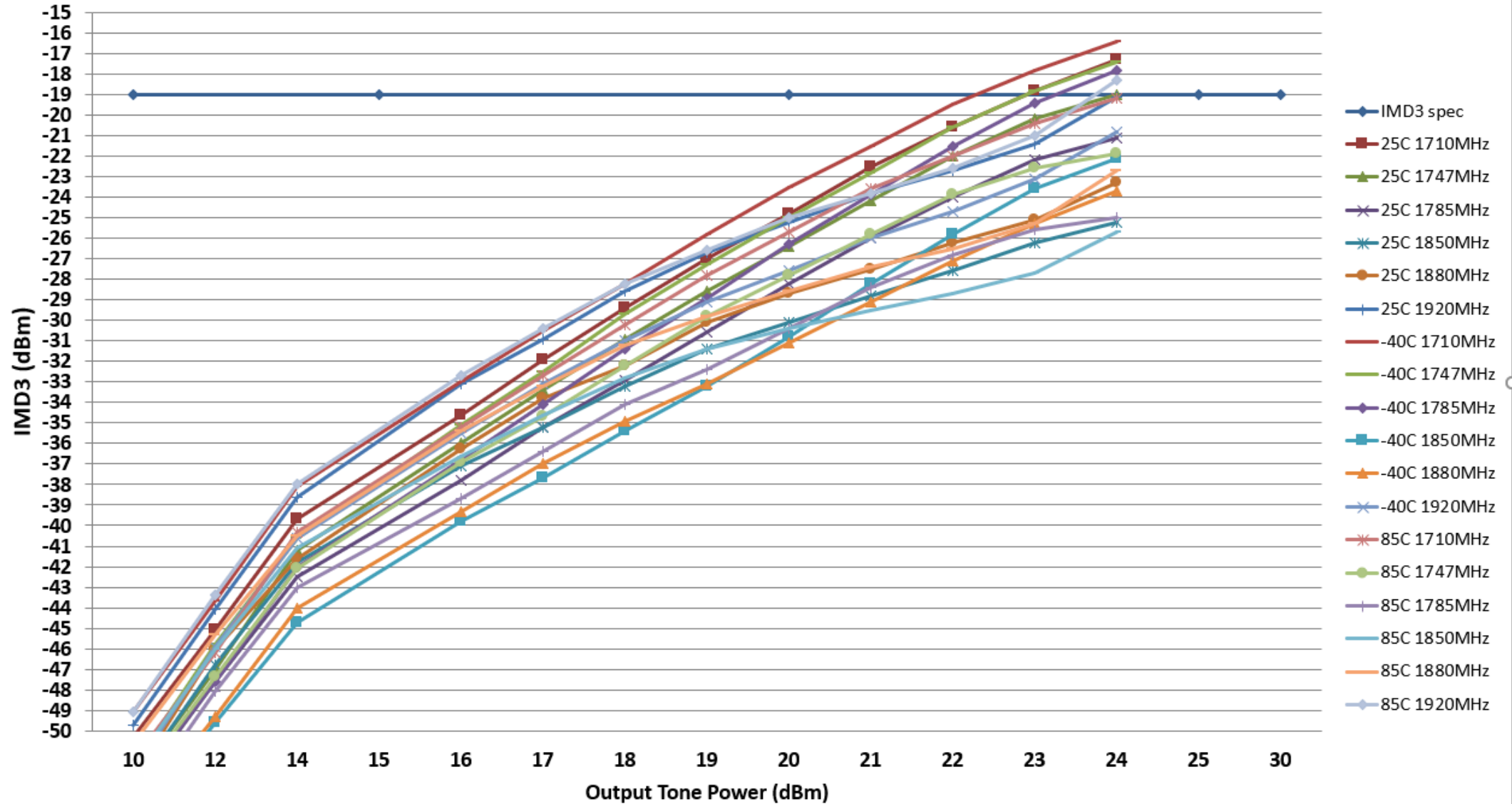


Standard Data:

Temp deg C	Freq MHz	VccV	Ven1V	Ven2V	VshdnV	Iddq mA	Pout/Ptone dBm	gain dB	tone spacing MHz	OIP3 dBm	IMD3 dBm	OP1dB dBm	Eff %	EVB NF dB
-40	1710	5	5	5	0	211.7	22	27.7	0.6	43	-19.5	33.1	48.4	x
-40	1747	5	5	5	0	211.7	22	27.9	0.6	43.5	-20.6	33.2	49.8	x
-40	1785	5	5	5	0	211.7	22	28	0.6	43.9	-21.5	33.4	52.7	x
-40	1850	5	5	5	0	211.7	22	27.9	0.6	45.9	-25.7	33.4	56.1	x
-40	1880	5	5	5	0	211.7	22	27.7	0.6	46.5	-27.1	33	54.4	x
-40	1920	5	5	5	0	211.7	22	27.5	0.6	45	-24.4	32.4	50.5	x
25	1710	5	5	5	0	222.4	22	26.7	0.6	43.3	-20.3	32.9	47.3	4.2
25	1747	5	5	5	0	222.4	22	26.9	0.6	44	-21.7	33	48.8	4
25	1785	5	5	5	0	222.4	22	27	0.6	44.9	-23.5	33.2	51.8	4
25	1850	5	5	5	0	222.4	22	26.8	0.6	46.7	-27.4	33.1	53.7	4
25	1880	5	5	5	0	222.4	22	26.7	0.6	46.1	-26.3	32.8	52.9	4
25	1920	5	5	5	0	222.4	22	26.5	0.6	44.2	-22.8	32.2	49.1	4.1
85	1710	5	5	5	0	229.9	22	25.9	0.6	43.9	-21.5	32.8	46.8	x
85	1747	5	5	5	0	229.9	22	26	0.6	44.8	-23.3	32.9	48.5	x
85	1785	5	5	5	0	229.9	22	26.1	0.6	46.2	-26	32.9	49.7	x
85	1850	5	5	5	0	229.9	22	26	0.6	47.1	-28.6	32.8	51.2	x
85	1880	5	5	5	0	229.9	22	25.8	0.6	46.4	-27.1	32.5	50.4	x
85	1920	5	5	5	0	229.9	22	25.6	0.6	44.2	-22.8	31.9	47	x

IMD:

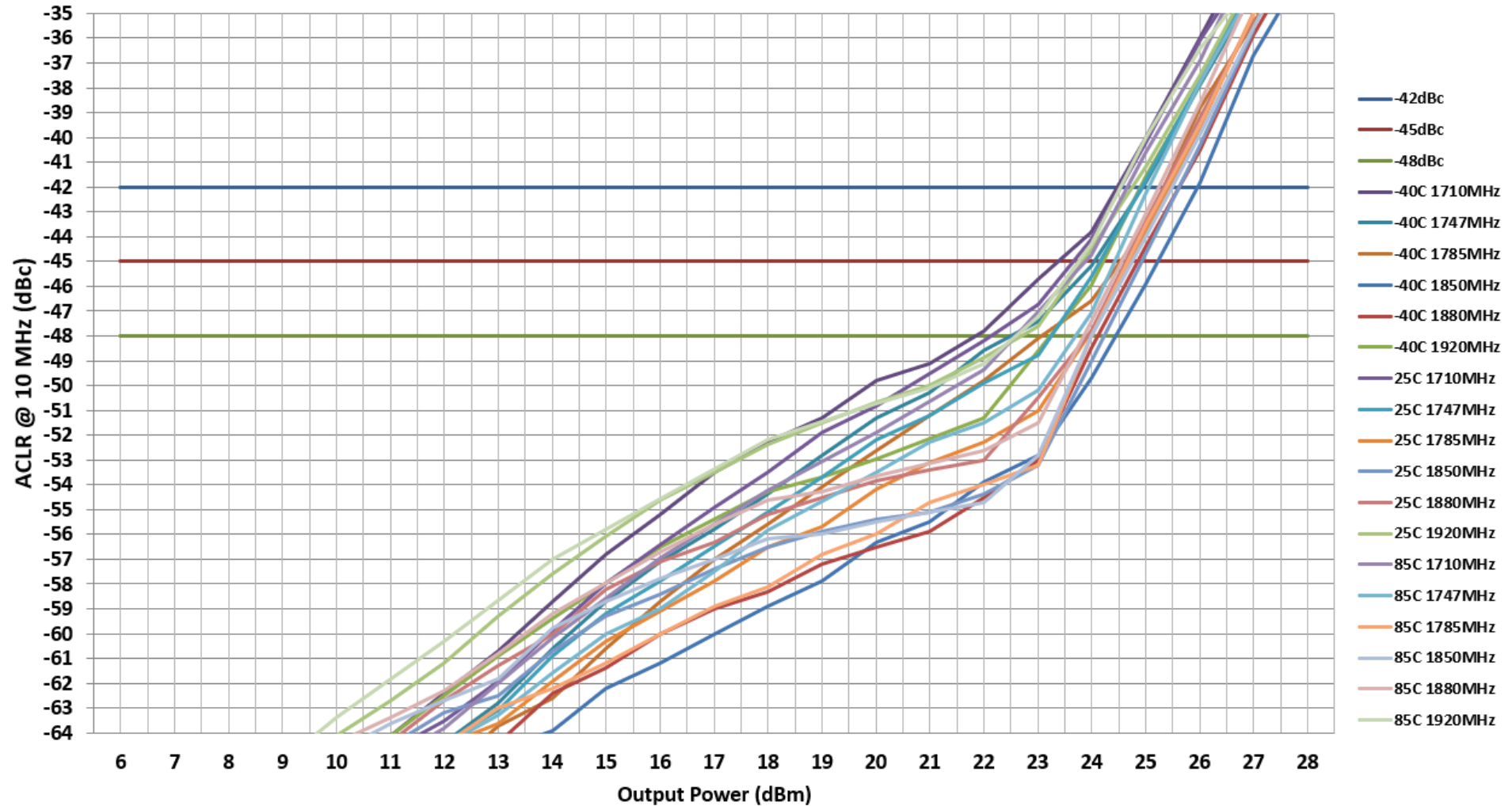
GRF5517



LTE 10Q50RB PAR = 9.6dB ACLR:

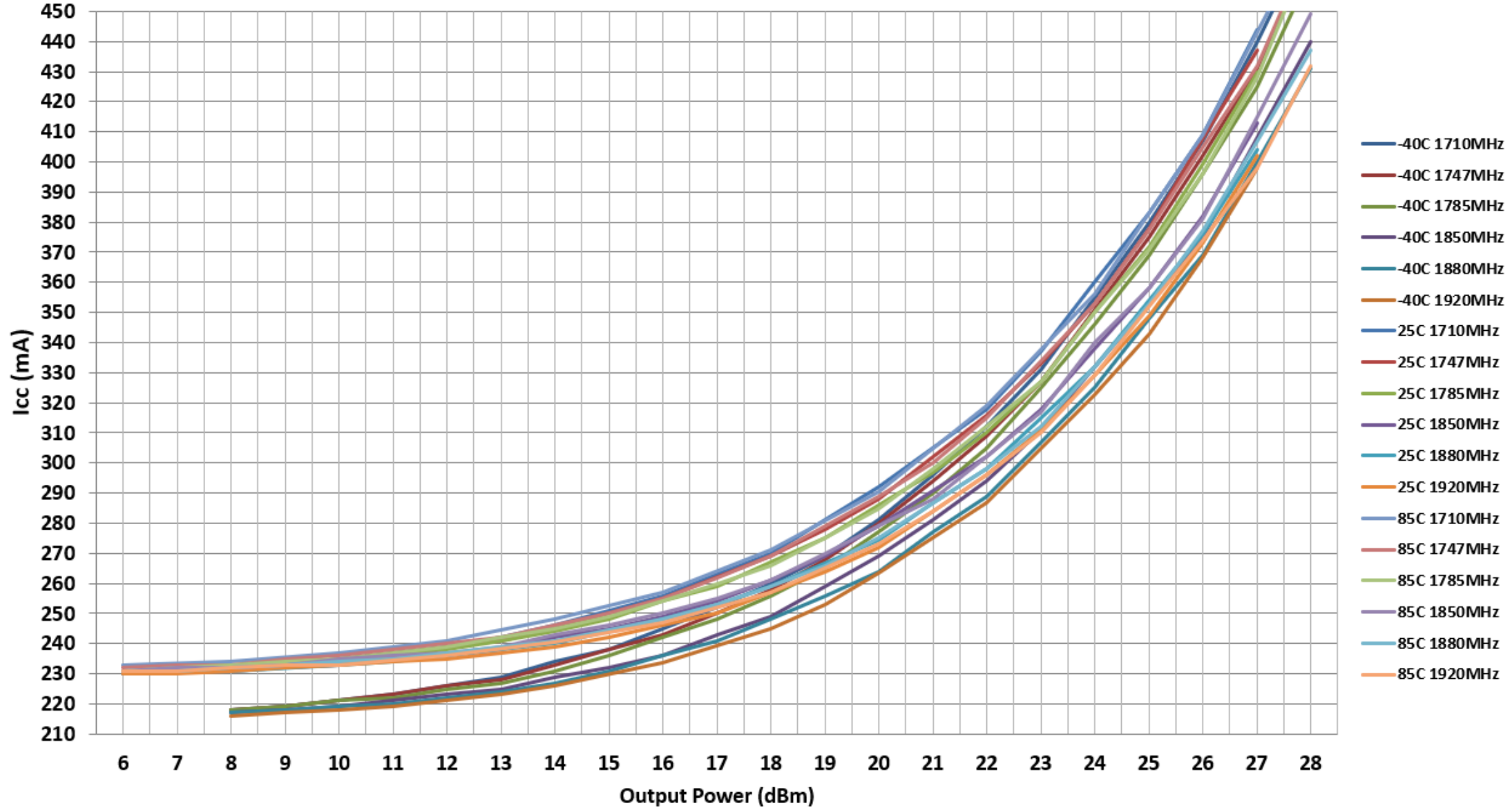
-42dBc Power (dBm)	-45dBc Power (dBm)	-48dBc Power (dBm)
24.5	23.4	21.8

GRF5517 LTE 10Q50RB PAR = 9.6dB



LTE 10Q50RB PAR = 9.6dB ACLR Current:

GRF5517 LTE 10Q50RB PAR = 9.6dB





Contact Us

Frank Nicosia

Technical Director

fnicosia@guerrilla-rf.com

336-639-1625