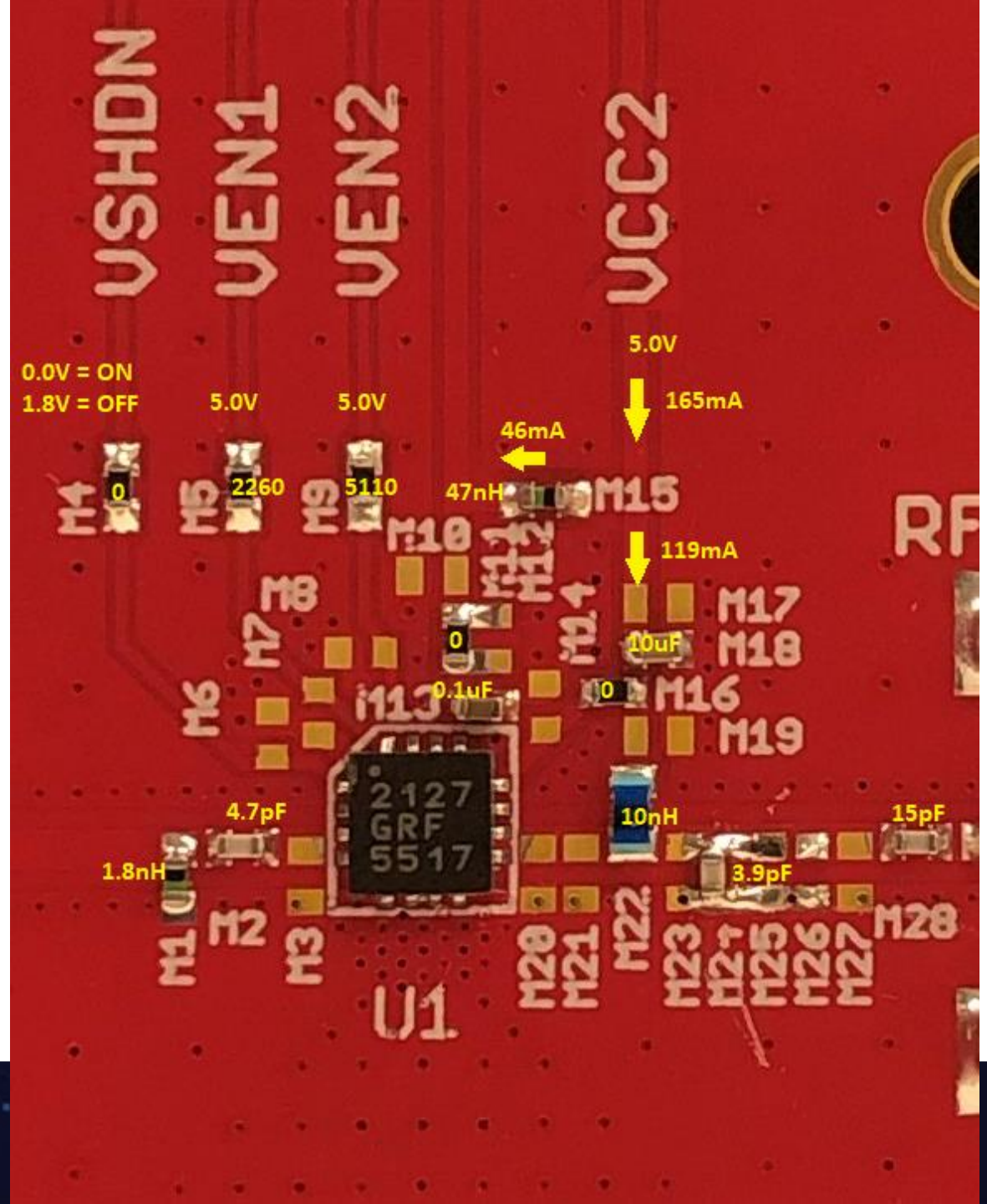




GRF5517 EVB 177 1600-1700 MHz

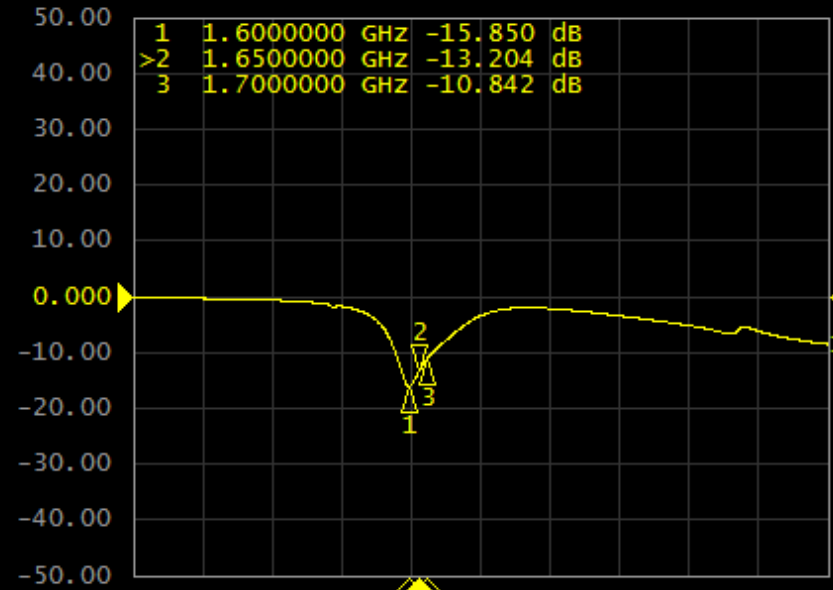
9/29/21

Schematic:

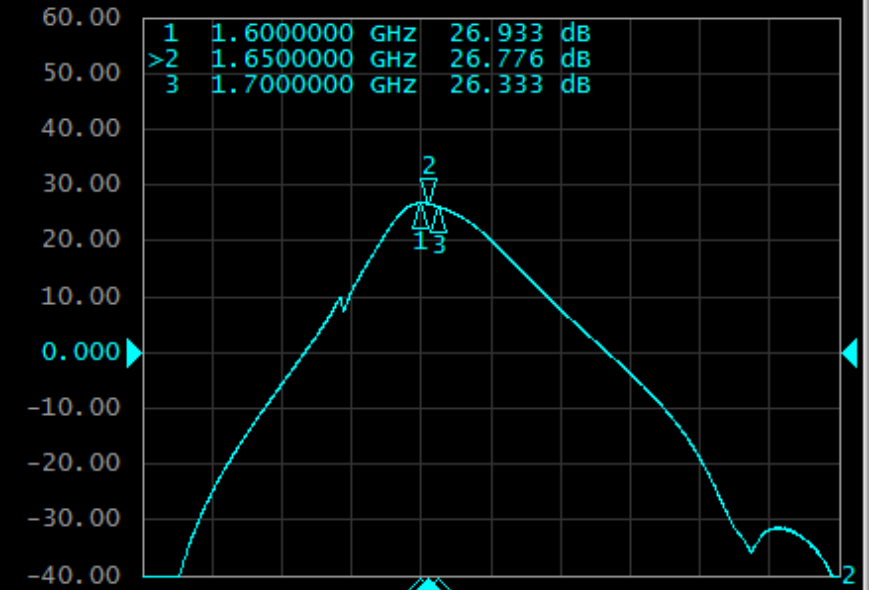


Response:

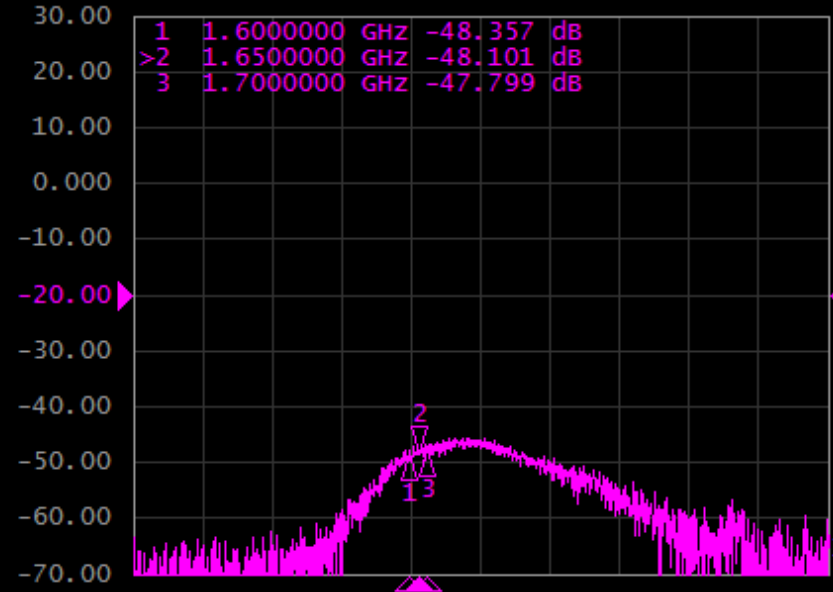
Tr1 S11 Log Mag 10.00dB/ Ref 0.000dB [F2]



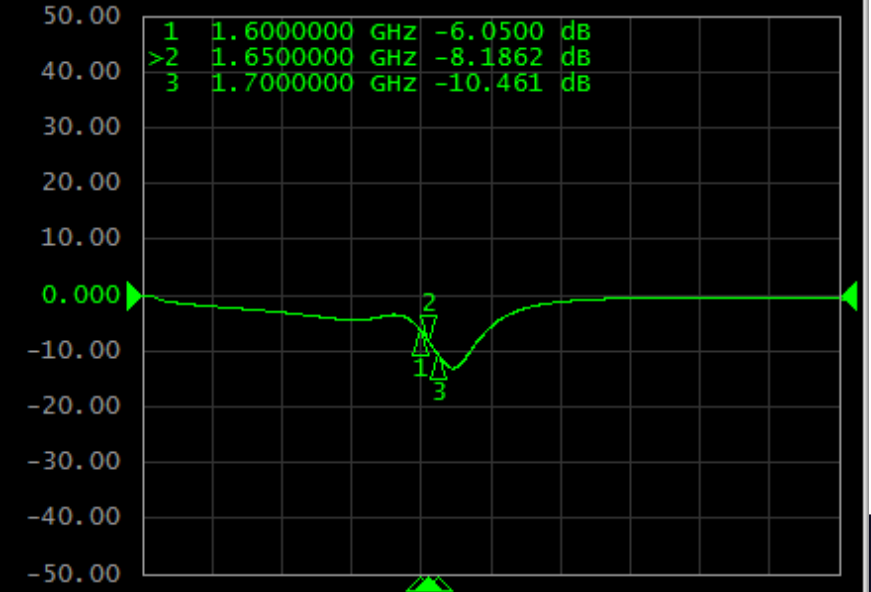
Tr2 S21 Log Mag 10.00dB/ Ref 0.000dB [F2]



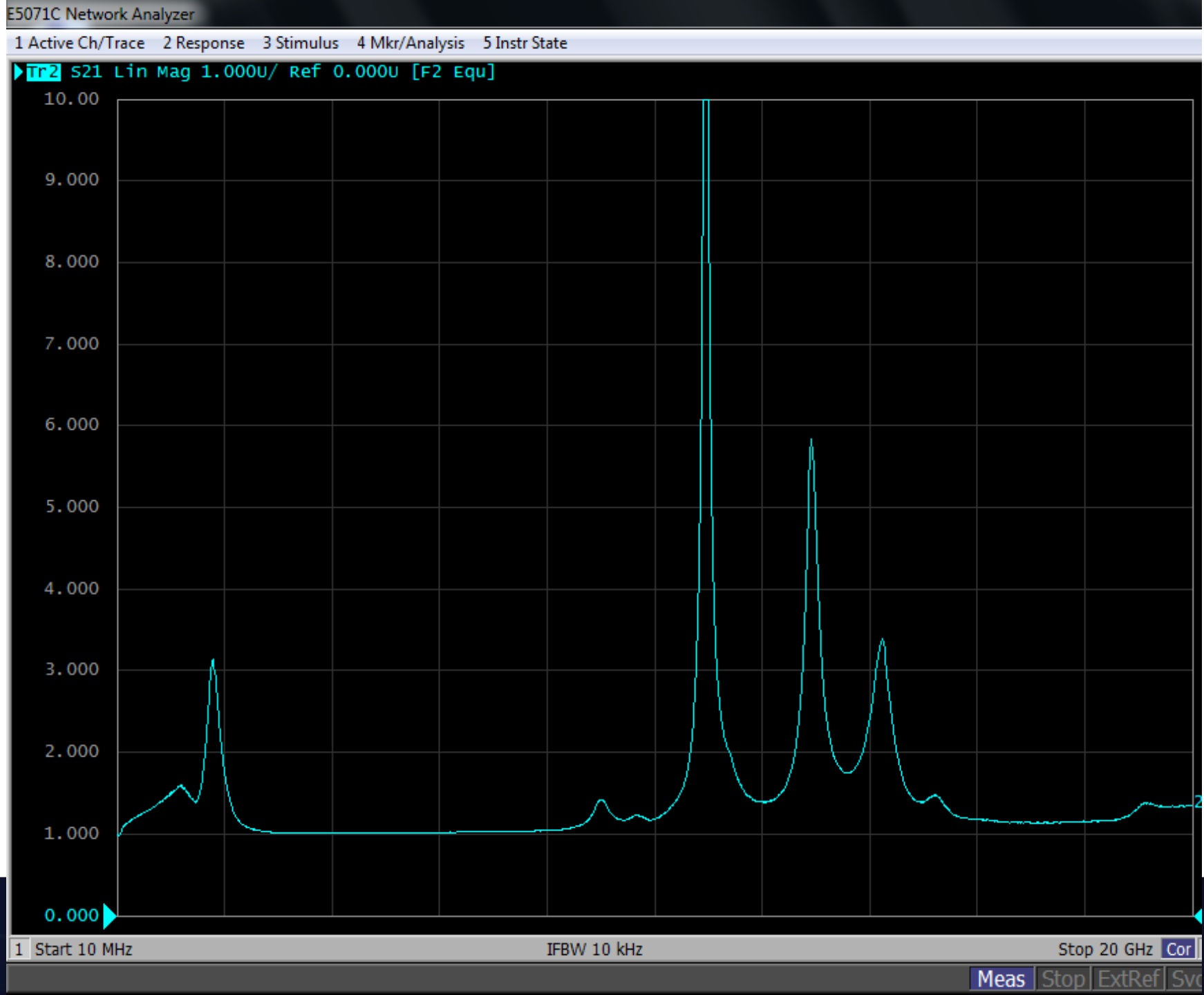
Tr3 S12 Log Mag 10.00dB/ Ref -20.00dB [F2]



Tr4 S22 Log Mag 10.00dB/ Ref 0.000dB [F2]



Stability:



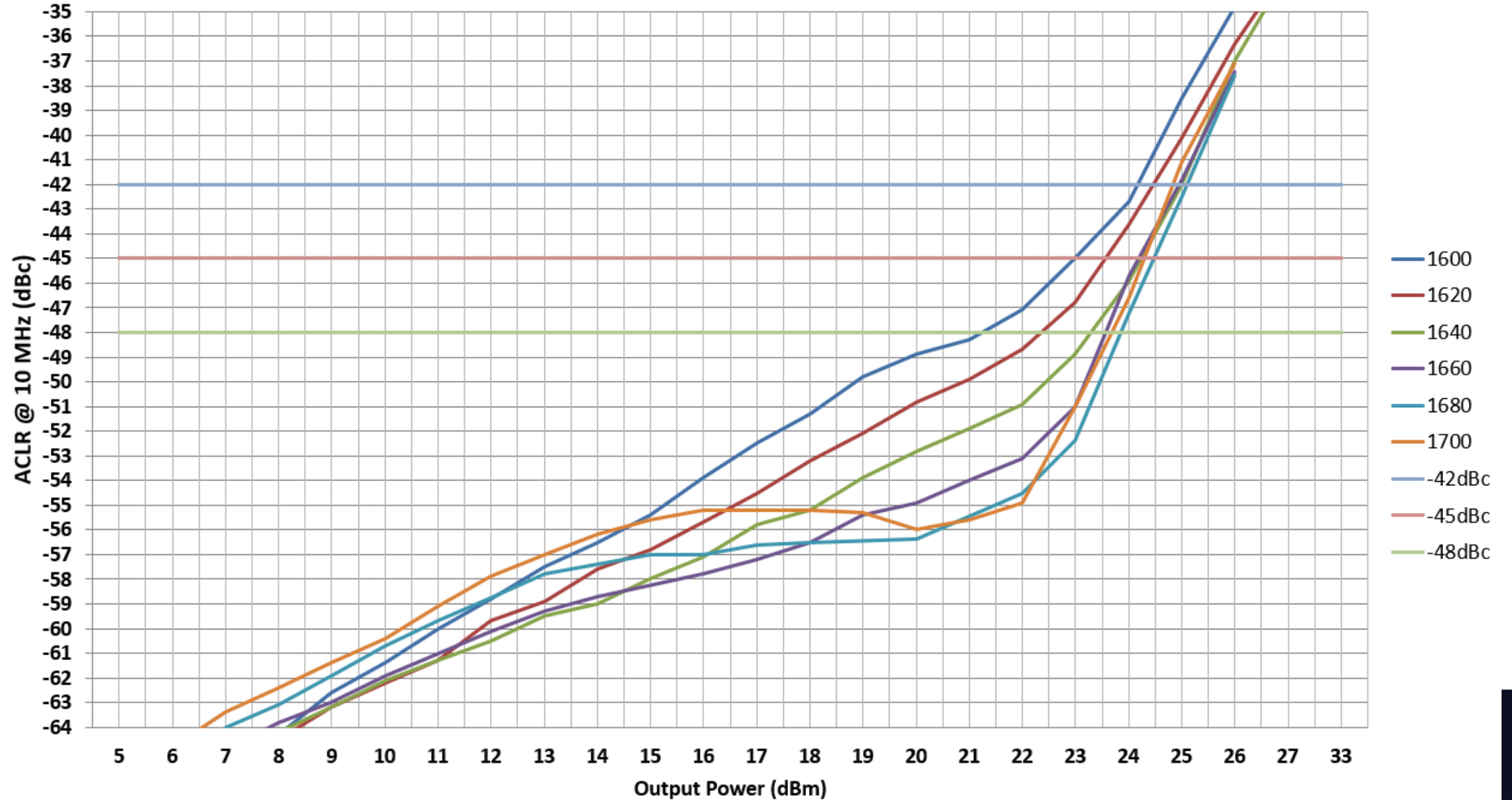
Standard Data:

Descriptor	Freq MHz	VccV	Ven1V	Ven2V	Vstby	Iddq mA	Pout/Ptone dBm	gain dB	tone spacing MHz	OIP3 dBm	IMD3 dBm	OP1dB dBm	Eff %	EVB NF dB
GRF5517 EVB 177	1600	5	5	5	0	164.9	22	27.3	0.6	42.9	-19.5	32.8	50.6	4.8
GRF5517 EVB 177	1620	5	5	5	0	164.9	22	27.2	0.6	43.8	-20.9	33	53.7	4.9
GRF5517 EVB 177	1640	5	5	5	0	164.9	22	27.1	0.6	44.5	-22.7	32.9	54.3	5.1
GRF5517 EVB 177	1660	5	5	5	0	164.9	22	26.9	0.6	45.6	-24.9	32.8	53.9	5.1
GRF5517 EVB 177	1680	5	5	5	0	164.9	22	26.7	0.6	46.5	-27.1	32.6	53.9	5.2
GRF5517 EVB 177	1700	5	5	5	0	164.9	22	26.5	0.6	47.5	-28.9	32.5	55	5.3

LTE 10Q50RB 9.6dB PAR ACLR:

-42dBc Power (dBm)	-45dBc Power (dBm)	-48dBc Power (dBm)
24.2	23	21.2

GRF5517 LTE 10Q50RB PAR = 9.6dB





Contact Us

Frank Nicosia

Technical Director

fnicosia@guerrilla-rf.com

336-639-1625